



## **Configuring Motorola Bluetooth PCMCIA**

# **SUPPORT GUIDE FOR MOTOROLA PHONES**

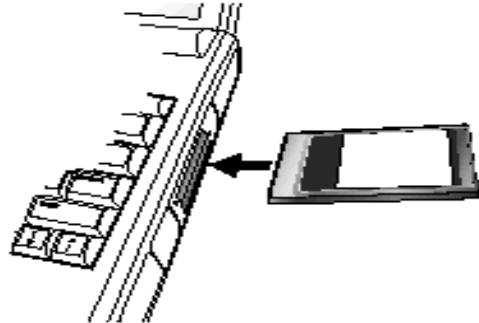
## Motorola Bluetooth PCMCIA Install

**1. Turn off computer.**

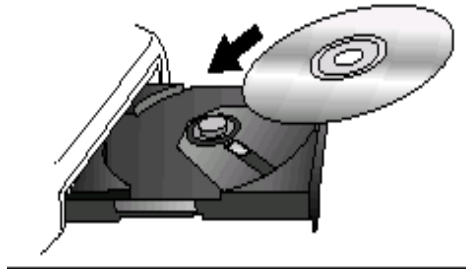
If you haven't already done so, turn off your computer.

**2. Install PC Card.**

Insert the PC card into your computer's PCMCIA slot and turn on your computer.



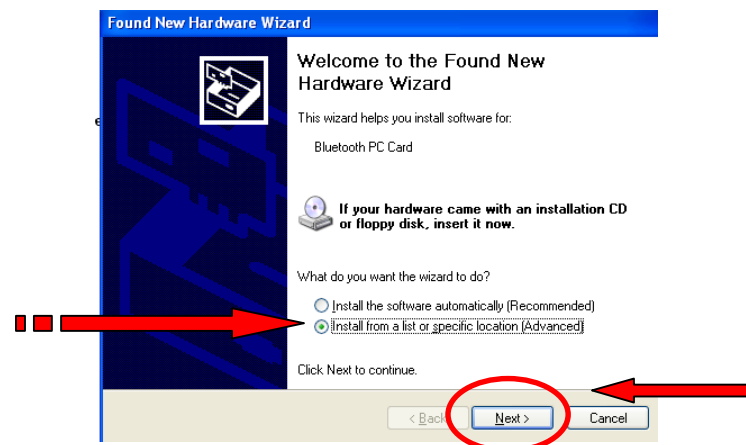
**3. Turn on PC and insert Bluetooth CD.** Insert the *Bluetooth Software Suite* CD into your CD-ROM drive.



**4. Specify Driver Locations.**

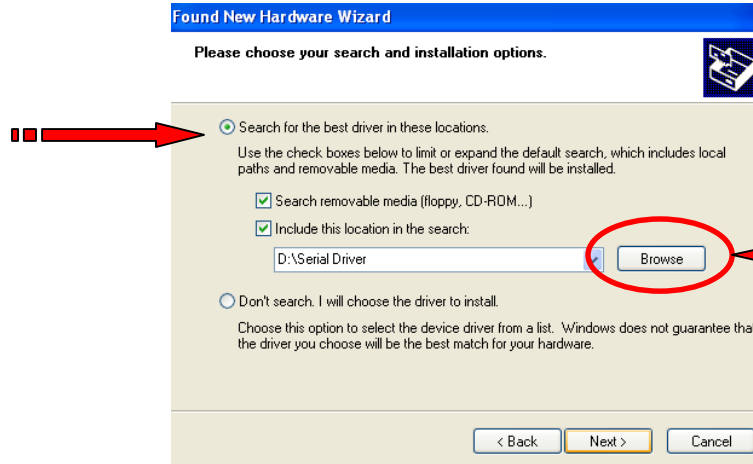
When prompted in the *New Hardware Found* wizard, choose to specify the location of the driver and click *Next*.

Select to *Install from a list or specific location (Advanced)*.



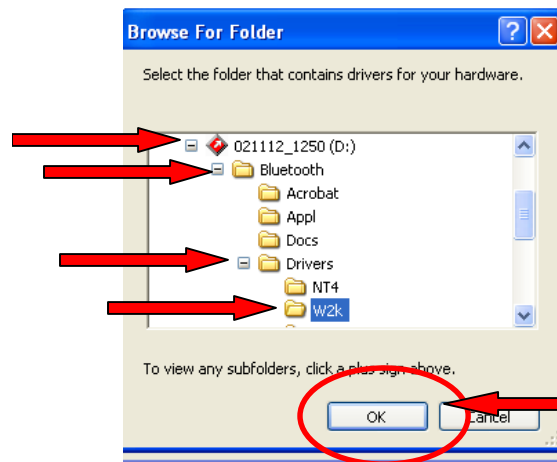
Click *Next* to continue.

Select to *Search for the best driver in these locations* and check off both boxes.

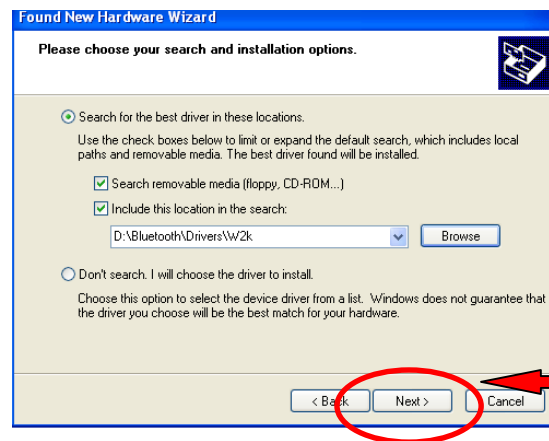


Click on *Browse* to select the driver from the CD-ROM.

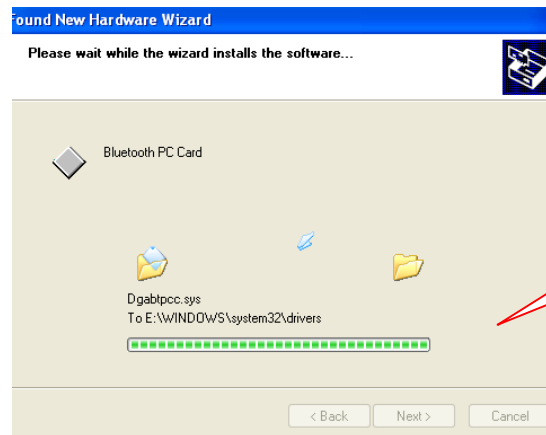
Expand the CD-ROM drive; then the Bluetooth folder; then Drivers; and then select your operating system (NT4, W2K (which is the same for XP), or 98))



Click *OK* to continue.



Click *Next* to continue.



**Complete the same setup until all drivers are installed. After the Bluetooth PC Card, which is the install that is displayed above, you will go through the same exact setup for the Bluetooth Ethernet Adapter, Bluetooth RFCOMM Protocol, and SDP Protocol.**

**\*\*\*Note, on Windows XP, you may get a message that states the software has not passed Windows Logo Testing. If you get this message, please select *CONTINUE ANYWAY* and the software will complete its install and will not damage any files on your PC\*\*\***

**5. Restart computer**

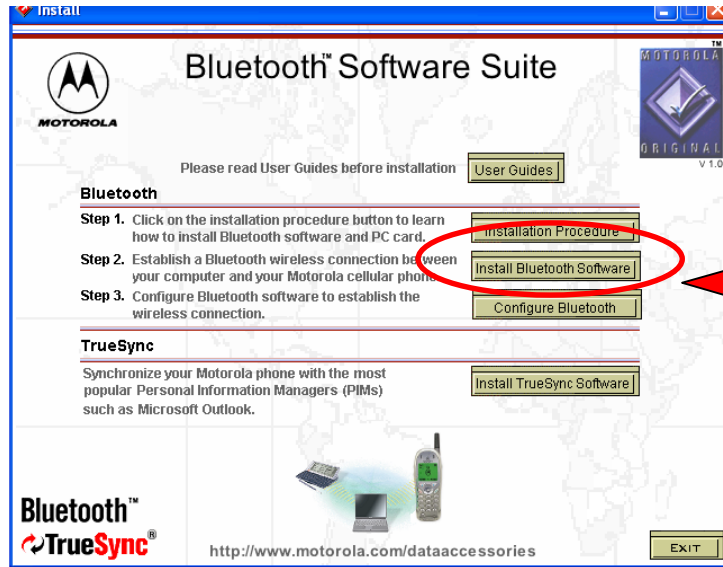
Restart your computer to complete the install.

**6. Run the CD**

Insert the CD and let it auto launch or go to Start/Run/ and enter X:\Install (where X is your CD-ROM drive.) and click OK.

**7. Begin Installation**

Install Bluetooth Software

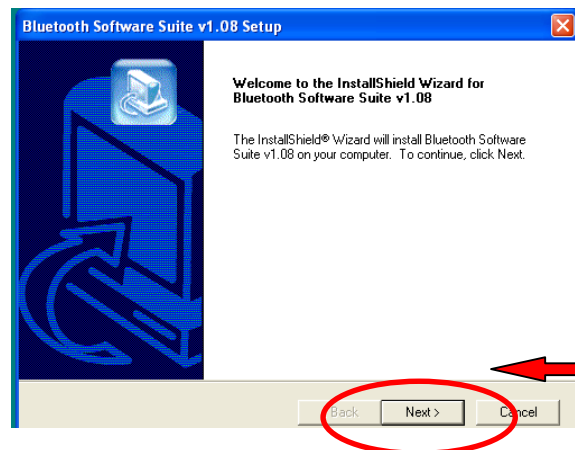


Click on *Install Bluetooth Software* from the initial setup screen from the CD.

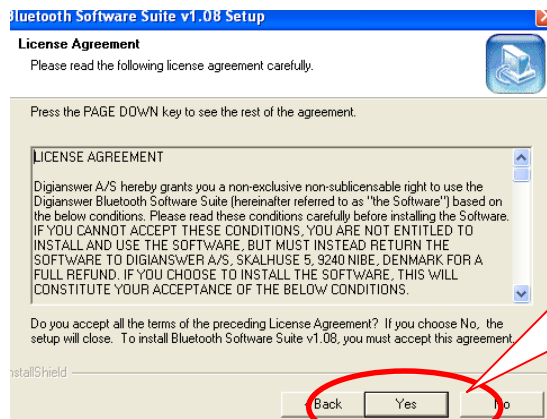


Select your language from the drop down menu and click *OK*.

The software prepares itself for the rest of the installation setup.

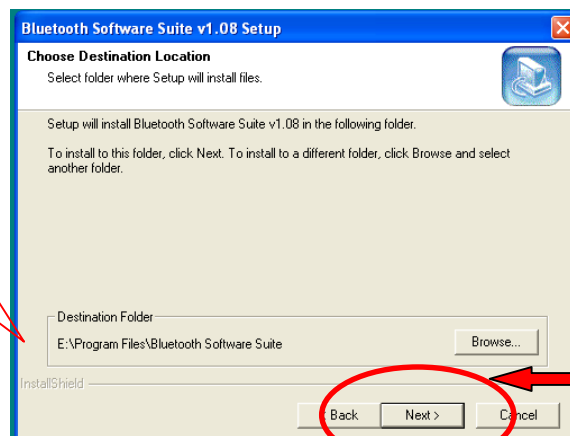


Click *Next* to continue with the Bluetooth Install Wizard.



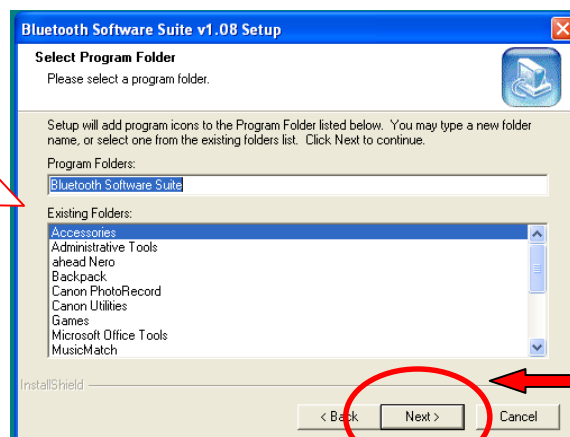
To continue with the software installation, read the license agreement and then click *Yes* to agree.

Here you can change the location of where the software will be installed to but it is suggested that you keep it set to the default path.

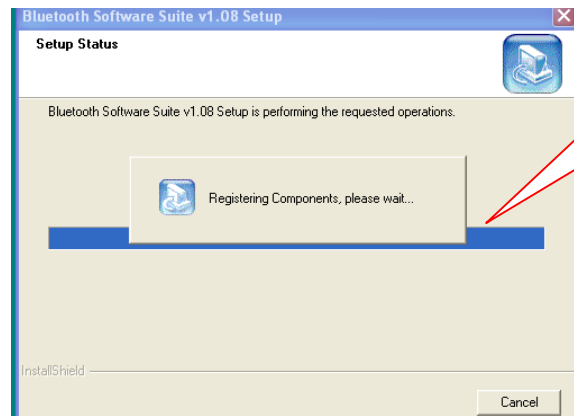


Click *Next* to continue.

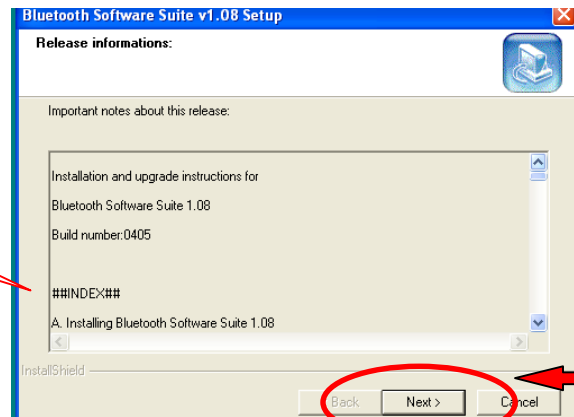
Here you can select the program folder to use and again, it is suggested to use the default.



Click *Next* to continue.

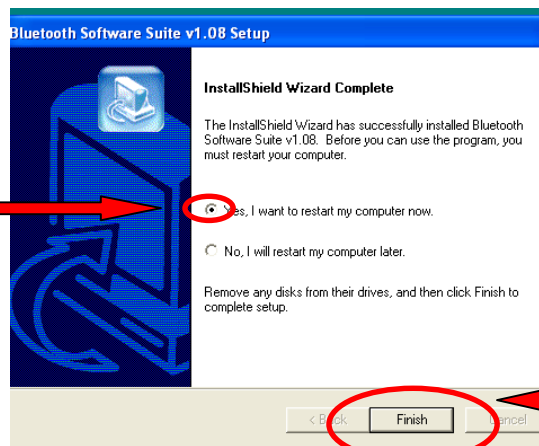


The software will continue to install itself.



Here you will see all the release information for the software.

Click *Next* to continue.

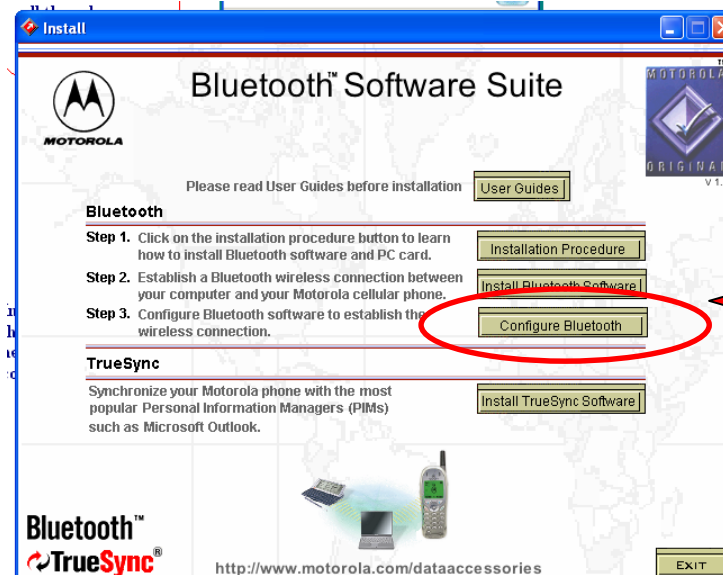


In order to complete the install, you will need to restart your computer.

Remove the CD from your computer and then Click *Finish* to restart your computer.

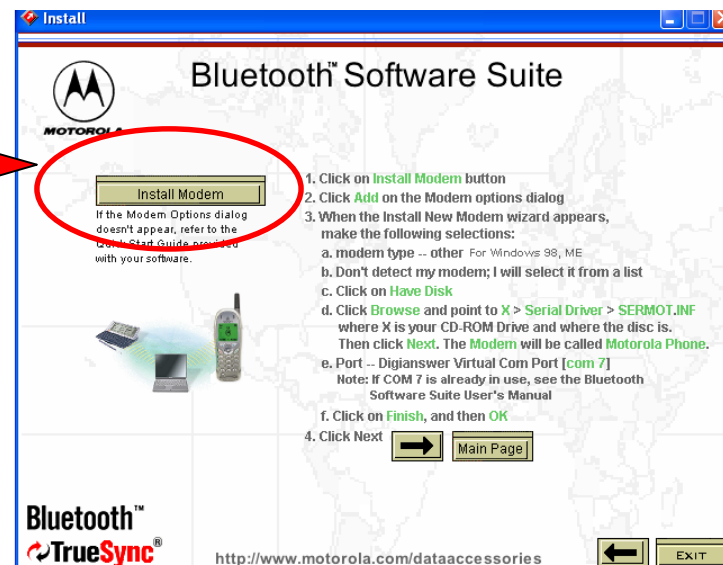
## 8. Configure Bluetooth

Insert the CD again to finish the rest of the Bluetooth setup.

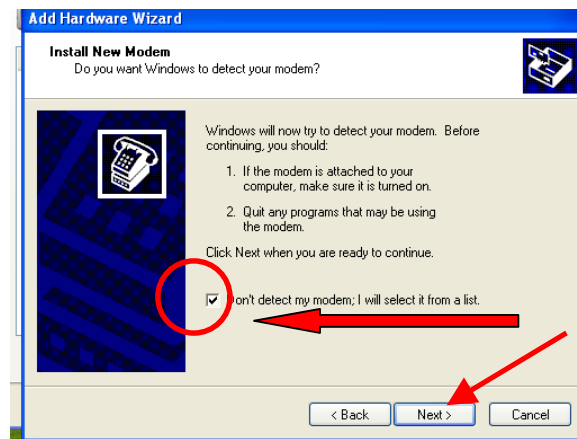
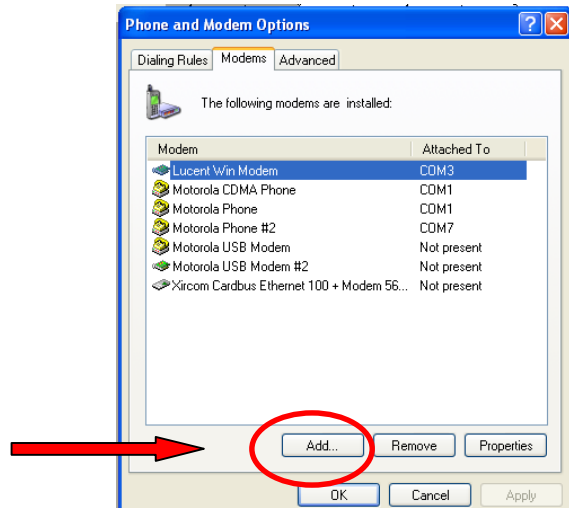


Click on *Configure Bluetooth* to take you to the setup to establish your connection between the PC and phone.

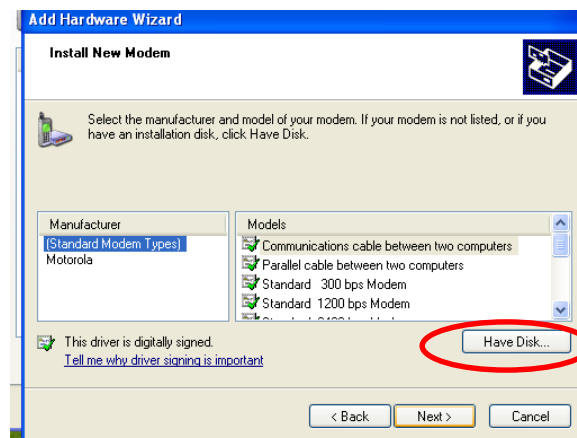
Click on *Install Modem* to configure the phone.



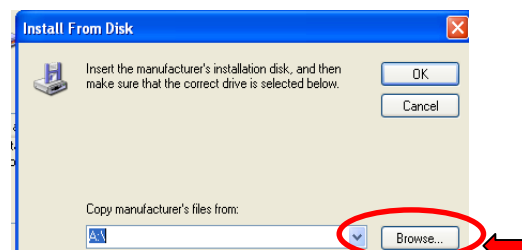
Click on *Add* to go through the *Install New Modem Setup*.



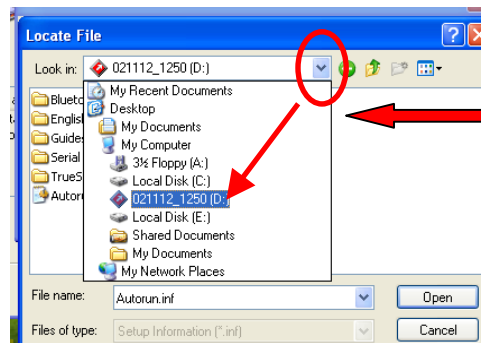
Check the dialogue box *Don't detect my modem I will choose from a list* and click *Next*.



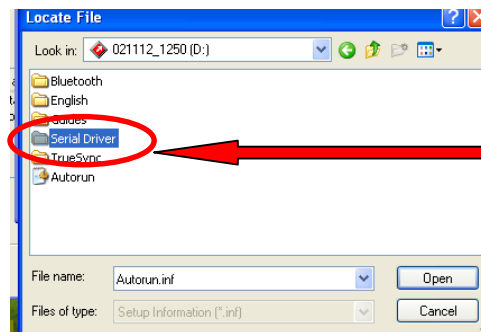
Click on *Have Disk* to choose a location where you can select your own modem.



Click on *Browse* to get a list of drives where you can select the driver.

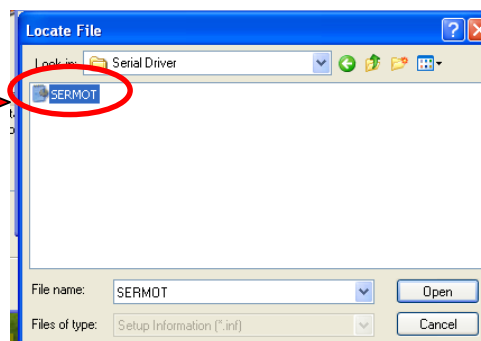


Select the drop down box in the *Look In* Window and select the CD-ROM Drive.



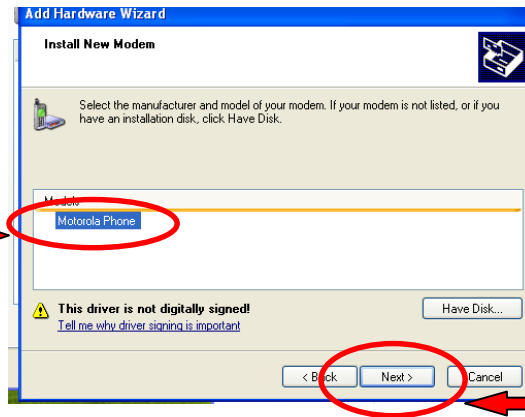
Double click on the *Serial Driver* folder.

Double click on the *SERMOT* file.

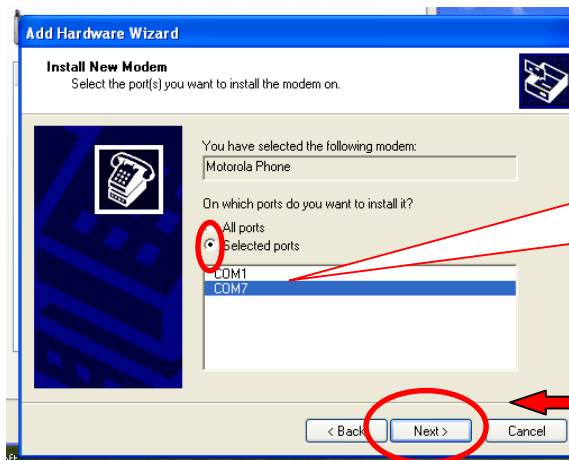


Click *OK* once you have the correct path listed.

**Highlight  
Motorola Phone.**



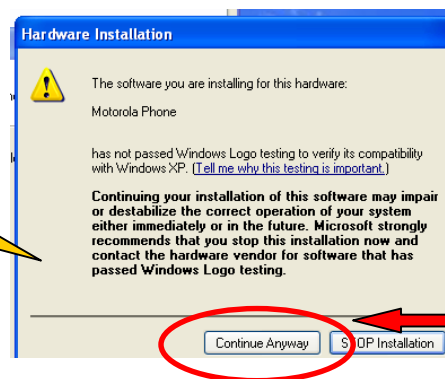
**Click *Next*  
to continue.**



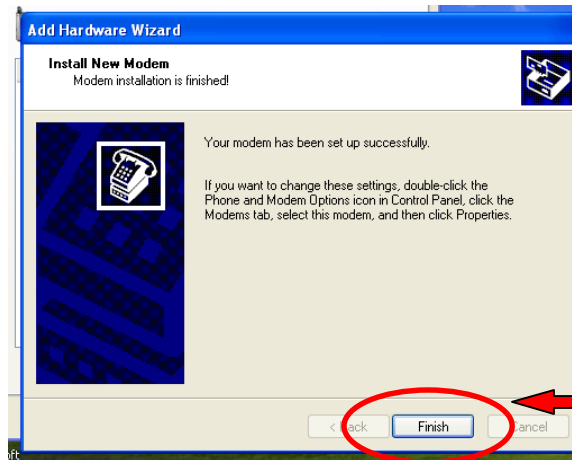
**Check *Selected  
Ports* and then  
highlight *COM 7*.**

**Click *Next*  
to continue.**

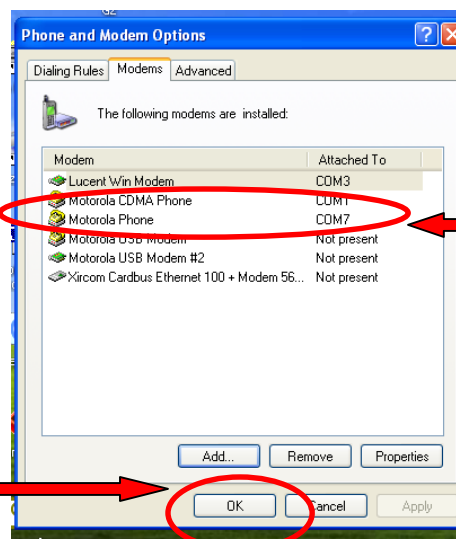
**NOTE...  
You will  
only get this  
message on  
Windows  
XP.**



**Click *Continue  
Anyway* to  
continue.**



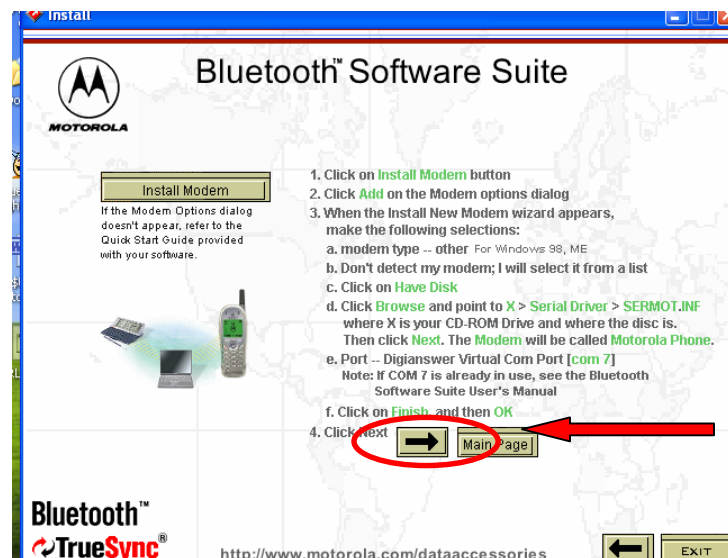
Click *Finish* to complete the Modem Installation.



You will then see the *Motorola Phone* on *COM 7* listed in the Modem Properties.

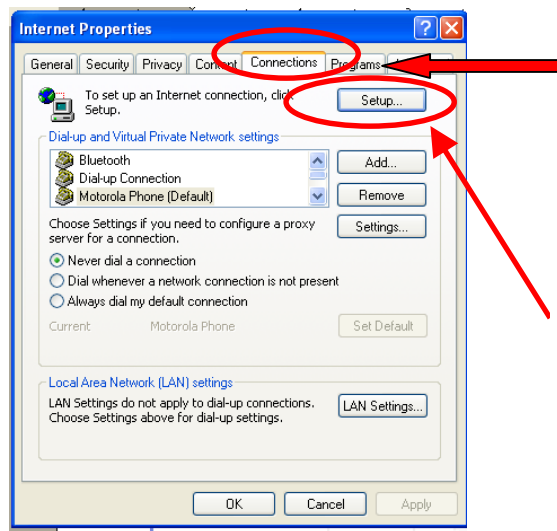
Click *OK* to Exit.

Open the CD's Install Screen Again... to install the Dial-Up Configuration.



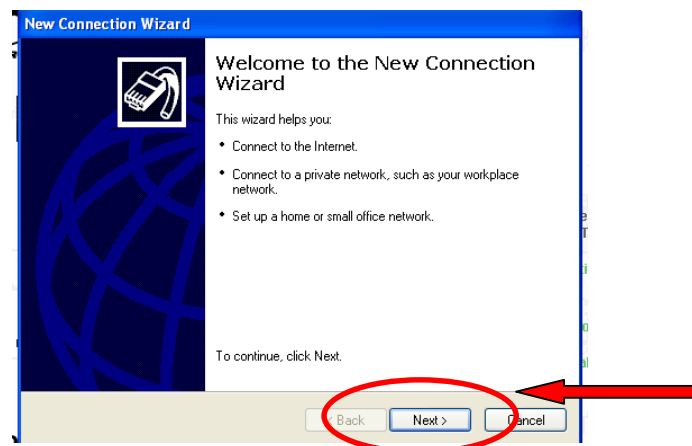
Click the *Next Arrow* to Continue.

Click on the *Configure Dial-Up and Browser Connections* button to setup the dial-up settings.

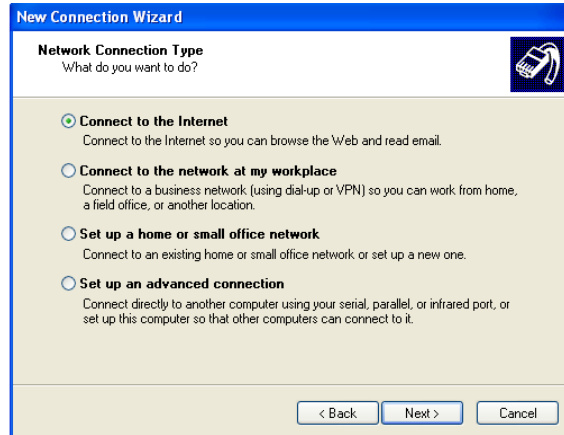


In the *Internet Properties* window, select the *Connections* tab.

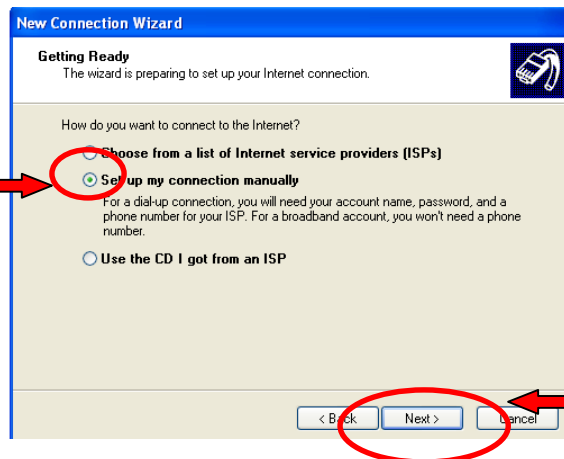
Then click on *Setup* to setup a dial-up connection for your Internet Service Provider.



Click *Next* to continue.

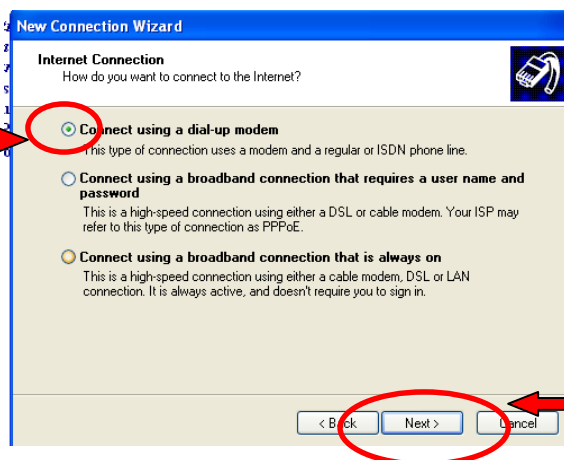


Select  
*Setup my  
connection  
manually*  
to select  
your own  
ISP to dial  
into.



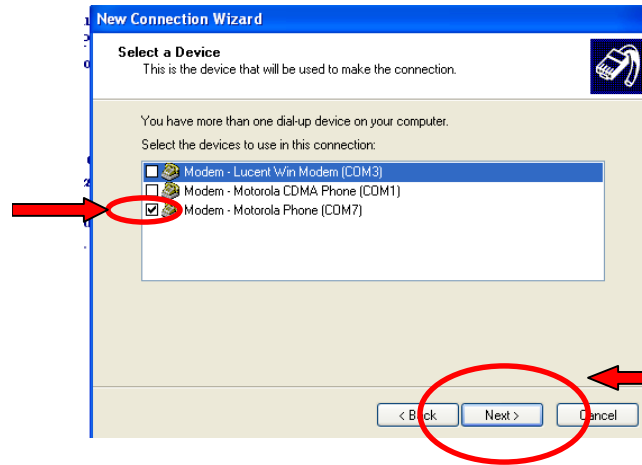
Choose  
*Next*  
to continue.

Select *Connect  
using a dial-up  
modem* to  
configure the  
phone.

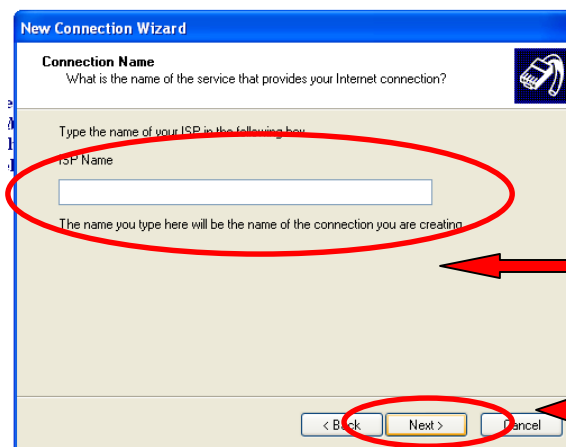


Click *Next*  
to continue.

**Make sure that the Modem – Motorola Phone is the only modem selected.**

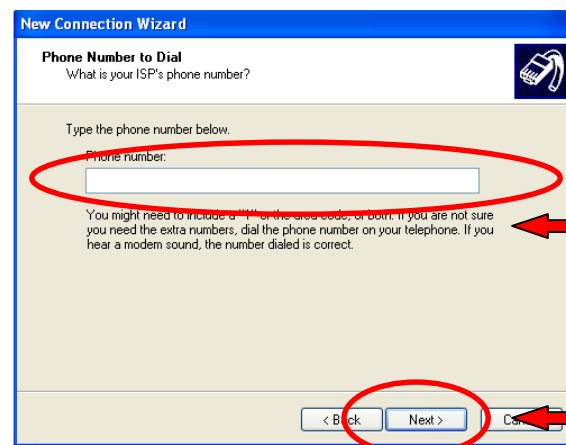


**Click *Next* to continue.**



**Type in the name of your Internet Service Provider here.**

**Click *Next* to continue.**



**Enter the number for your ISP that you dial into.**

**Click *Next* to continue.**

**New Connection Wizard**

**Internet Account Information**  
You will need an account name and password to sign in to your Internet account.

Type an ISP account name and password, then write down this information and store it in a safe place. (If you have forgotten an existing account name or password, contact your ISP.)

User name:

Password:

Confirm password:

Use this account name and password when anyone connects to the Internet from this computer

Make this the default Internet connection

Turn on Internet Connection Firewall for this connection

< Back Next > Cancel

Enter your  
*Username and Password and confirm the same password.*

Click *Next* to continue.

**New Connection Wizard**

**Completing the New Connection Wizard**

You have successfully completed the steps needed to create the following connection.

**Verizon**

- Share with all users of this computer

The connection will be saved in the Network Connections folder.

Add a shortcut to this connection to my desktop

To create the connection and close this wizard, click Finish.

< Back Finish Cancel

For easy access to this connection, choose to create a shortcut on your desktop.

Click *Finish*.

Open the CD's Install Screen Again... for information on how to setup your phone for faxing capabilities.

**Install**

**MOTOROLA**

**Bluetooth™ Software Suite**

Optional: Set Up Fax Application Software

To use the Bluetooth dial-up connection for fax services, set your fax software application to use the Com port you selected in Section C Step 1 (the Motorola Phone modem).  
Note: must use Fax Class 2.0 and TAPI port settings as default.

For details, refer to the fax software User's Guide you are using.

Click next  Min Page

Bluetooth™ TrueSync®

http://www.motorola.com/dataaccessories

EXIT

To utilize your phone to be able to send or receive faxes, you will be required to have your own faxing software. Make sure that these settings are set correctly in your faxing software.

Click the *Next Arrow* to continue.

Listed below you will see screen shots of the phone. Once you have verified that you have the *Bluetooth Link* on your phone, click *Next* to continue.



You can click on here to read how to remove your battery door and add the module as well as a general overview of Bluetooth.



Press the *Menu* button on the phone.



At this screen press the down navigate button and scroll down to *Settings*.



With the *Settings* option highlighted, press the right soft key to select this option.



Scroll down to *Connection* and press the right soft key to *Select*.

Verify that you have the option for *Bluetooth Link* in this menu. (If you do not, power off the phone and power it back on, also making sure that the module is connected.)

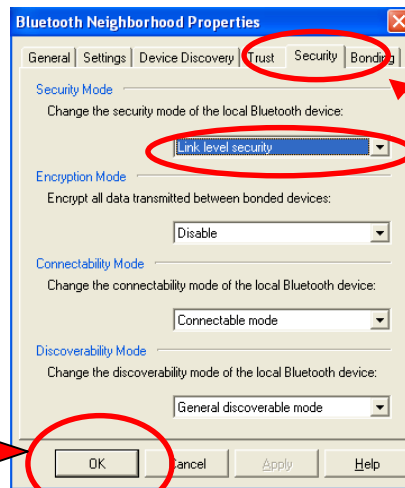
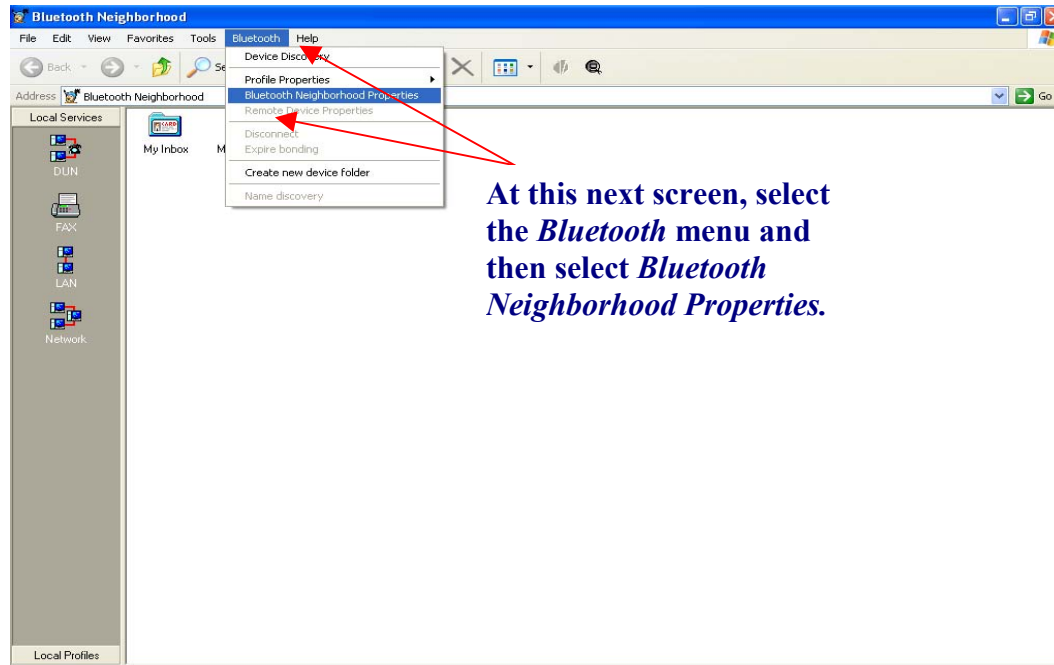


Once you have verified that the phone has the option for the Bluetooth Link, continue with the rest of the Software Install from the CD.



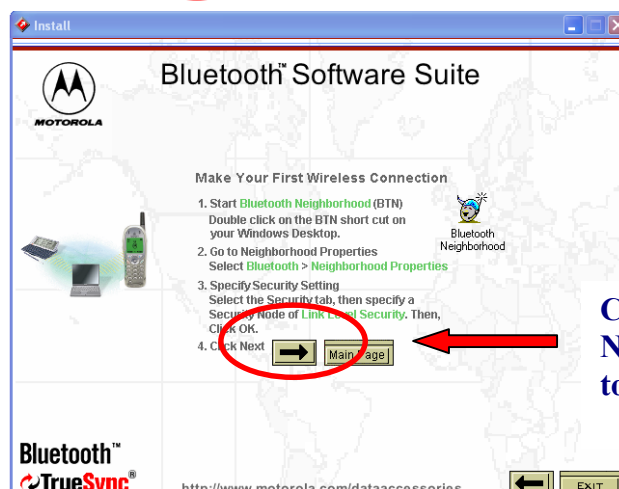
**Double click on the *Bluetooth Neighborhood* icon on your *Windows Desktop* to launch the program.**



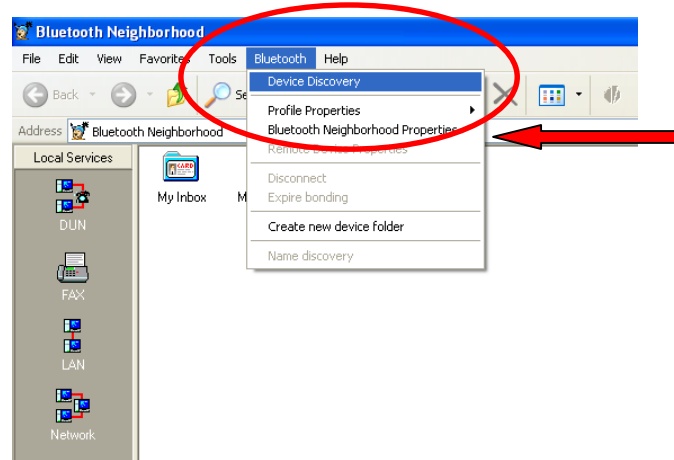
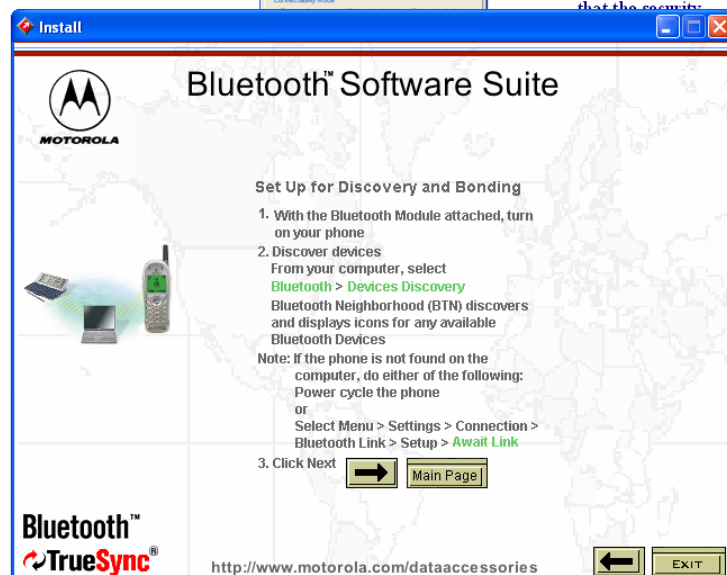


Click **OK**  
to continue.

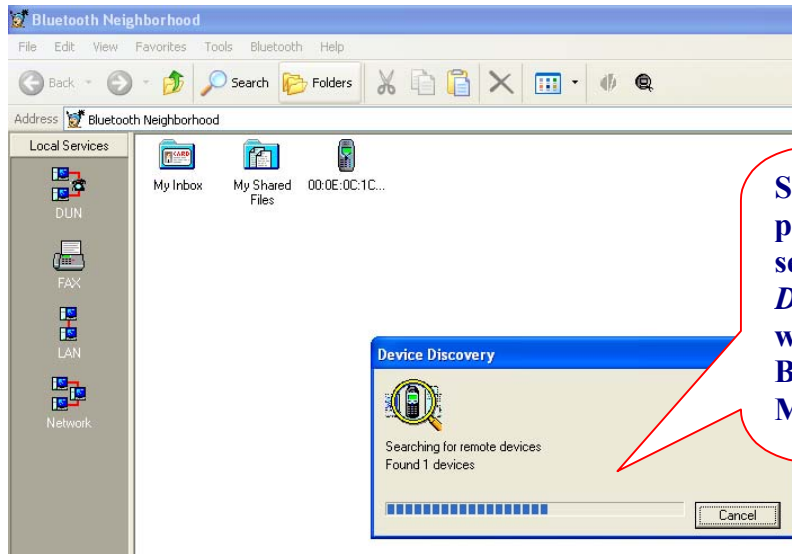
Select the **Security**  
tab and make sure  
that the security  
mode is set to **Link  
Level Security**.



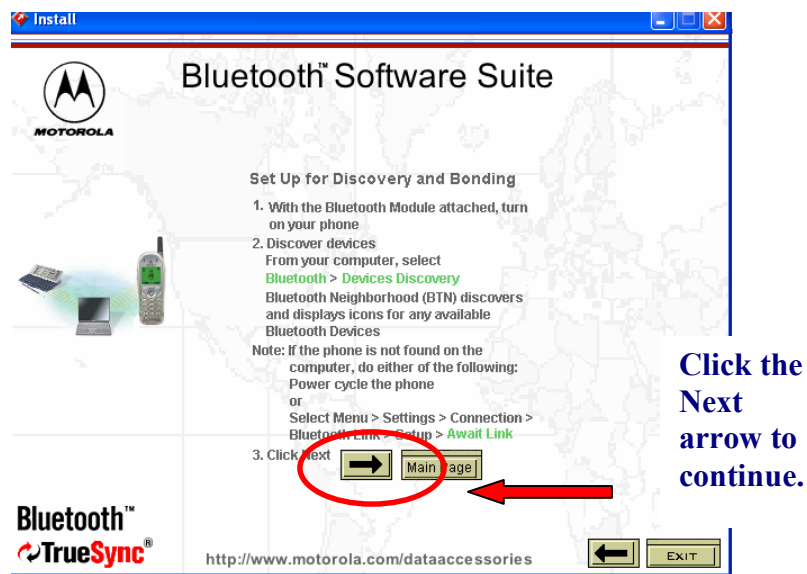
Click the  
**Next Arrow**  
to continue.

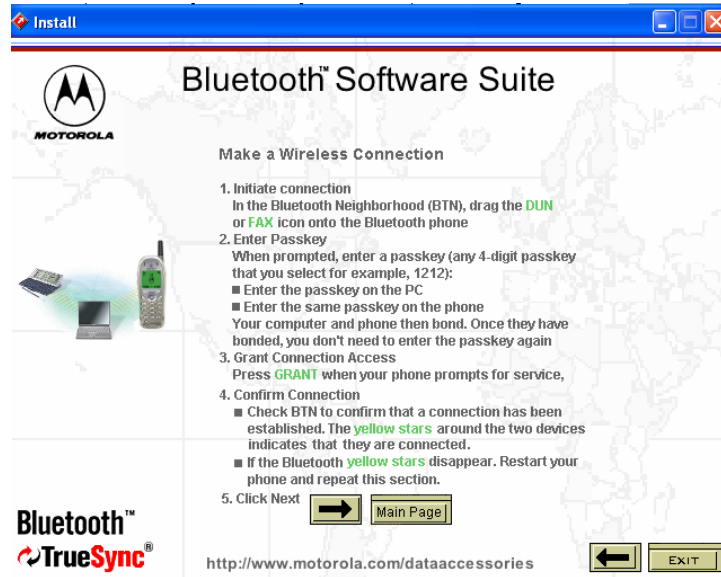


**In Bluetooth Neighborhood, select *Bluetooth* and then *Device Discovery* with the phone powered on first.**

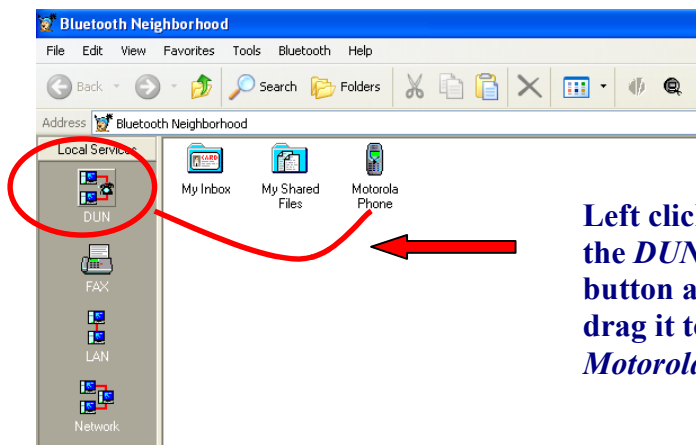


Once the phone is detected, please go back to the CD's Installation screen...

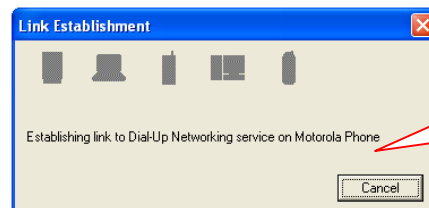




**At this point, please go into the Bluetooth Neighborhood Program.**

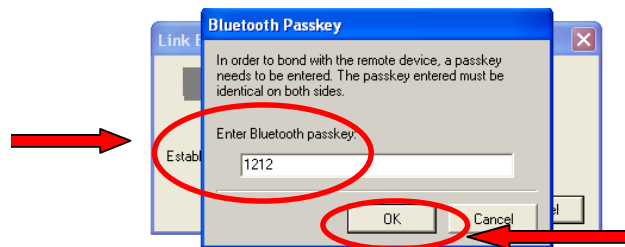


**Left click on the *DUN* button and drag it to the *Motorola* icon.**



**You will then see a screen that it's establishing a link to the phone.**

**Here it will prompt you for a four-digit passkey. You will need to click inside that box and then you can enter any four-digit code, it will just need to match what is entered into the phone when prompted.**

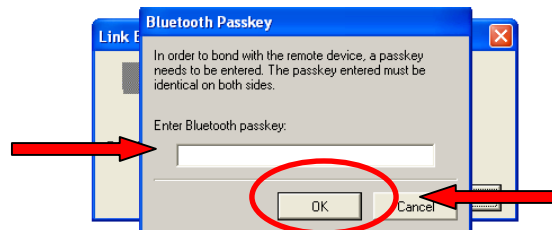


**Click *OK* to continue.**

Press the left soft key to select **YES** to bond with the PC.



When prompted for the **Passkey**, you will need to click in the box to enter text and then enter any 4-digit code. This number will need to match what you enter on the phone when prompted. (i.e. 1234).



Click **OK** to continue.

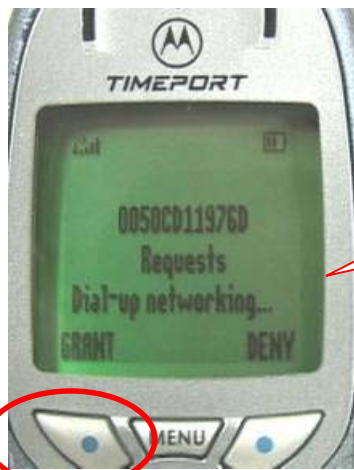
Then press the **Right Soft Key** to select **OK**.



The phone will then prompt to enter the **Passkey**. Make sure you enter the same 4-digit number that you entered on the PC.



The phone will then verify the *Passkey* that you entered.

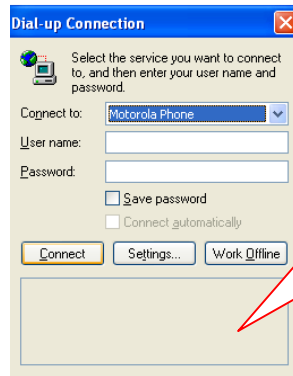


The phone will then request to establish a dial-up networking connection.

Press the *Left Soft Key* to select *Grant*.



At this point the phone will display *Bluetooth* and you can begin to use your phone wirelessly.



**A dial-up networking window will pop up then asking you to connect. At this point, you will need to set this information up through your Internet Service Provider.**