

## How to Troubleshoot COM PORT in HyperTerminal

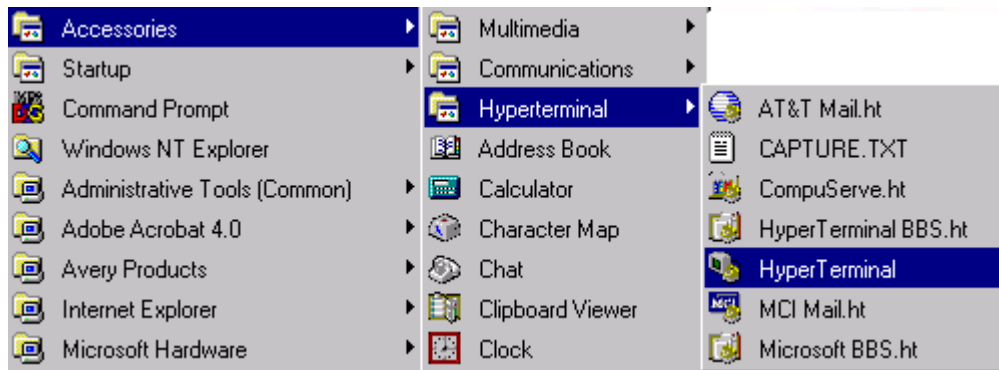
The information in this article applies to:

- Microsoft Windows 95, 98, 98 SE A & B, NT 4.0, 2000 & XP

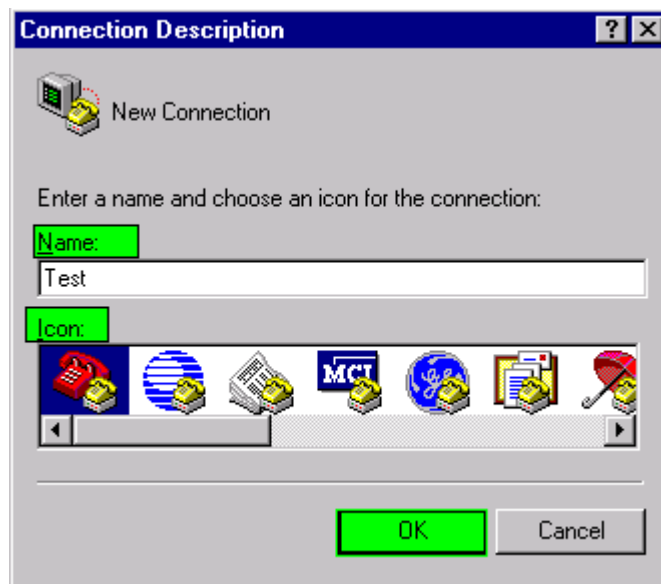
### SUMMARY

To use AT commands in HyperTerminal to test COM Ports, follow these steps:

1. Start, Programs, Accessories, Communication, HyperTerminal, HyperTerminal (Hypertrm.exe).



2. Enter a name for the connection (for example, Test) in the Name box, click an icon for the connection in the Icon box, and then click OK.



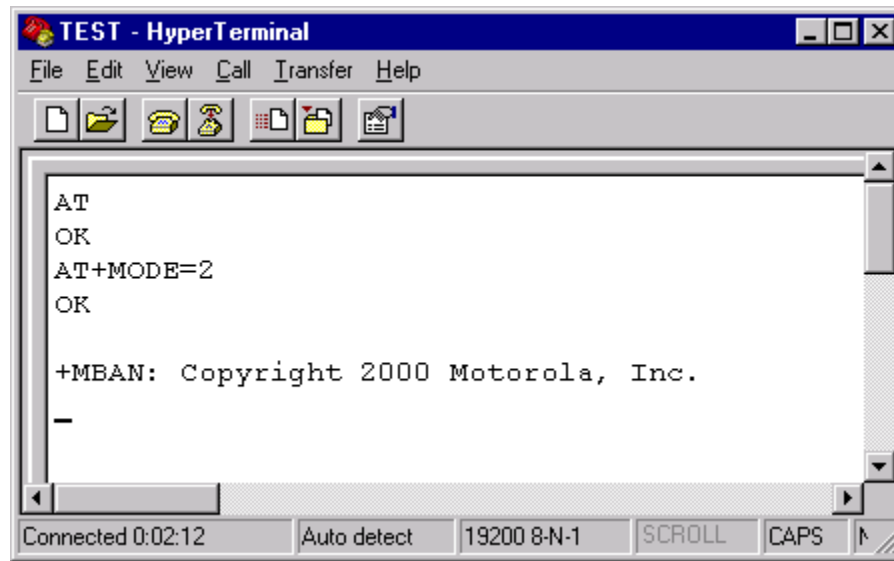


3. In the Connect Using box, click Direct To Com X (where X is the port your modem is connected to) and then click OK.



4. Verify the speed (Bits per second: 19200) on the Port Settings tab and then click OK. Any speed below 19200 will not work.





7. If you get "+MBAN: Copyright 2000 Motorola, Inc." for AT+MODE=2 then, then communication between the phone and the computer is good.