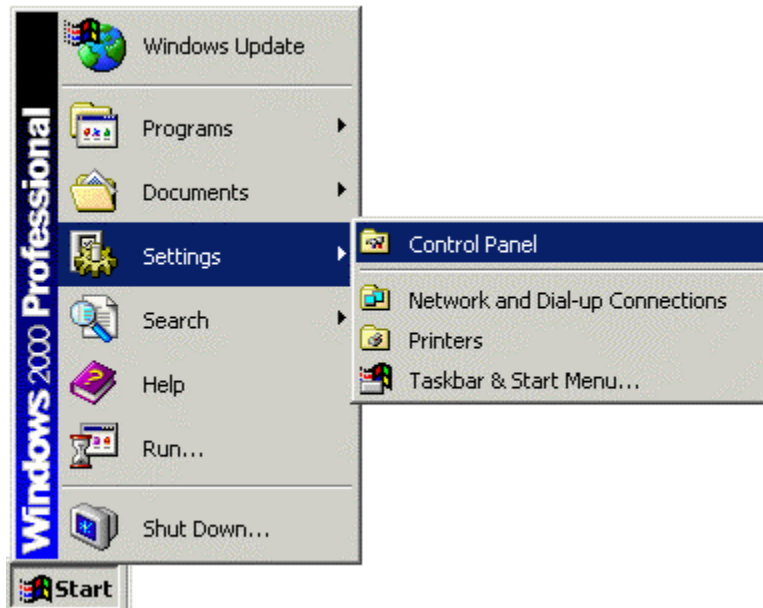


## How to Create a Dial Up in Windows 2000



- **Operating System(s):** Windows 2000
- **Application:** Microsoft Dial-Up Networking
- **Application Version(s):** 4.0

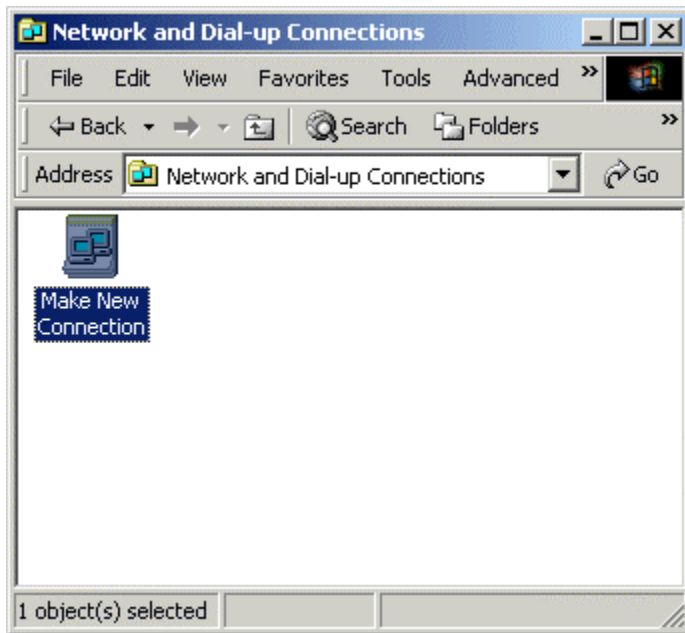
1. Click the **Start** button, click **Settings**, and choose **Control Panel**.



2. Double-click the **Network and Dial-up Connections** icon.



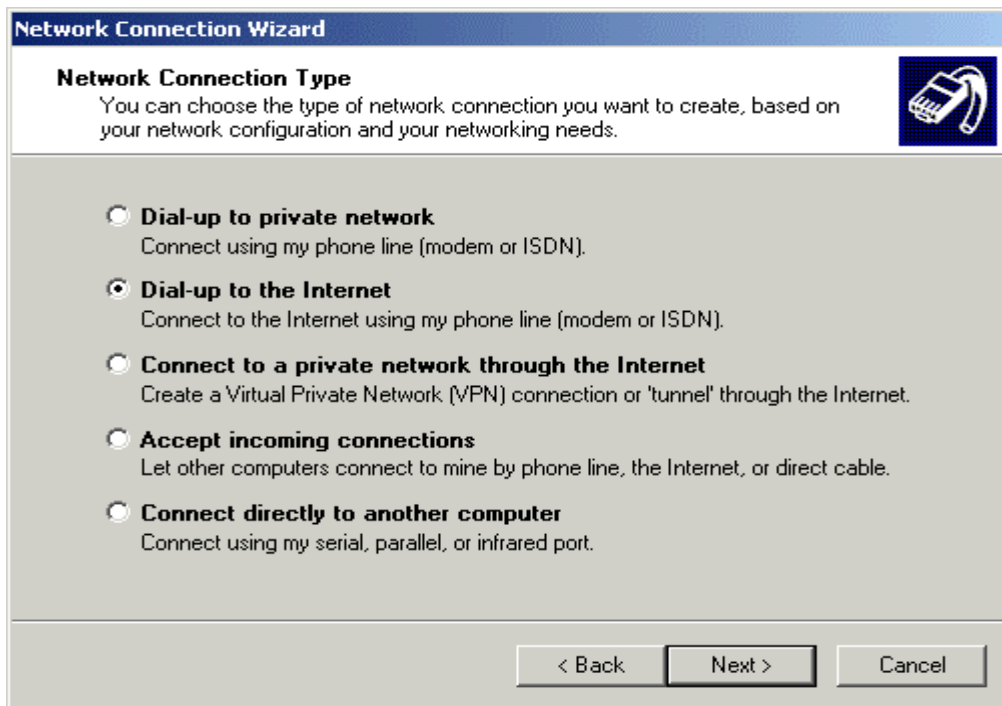
3. Double-click the **Make New Connection** icon.



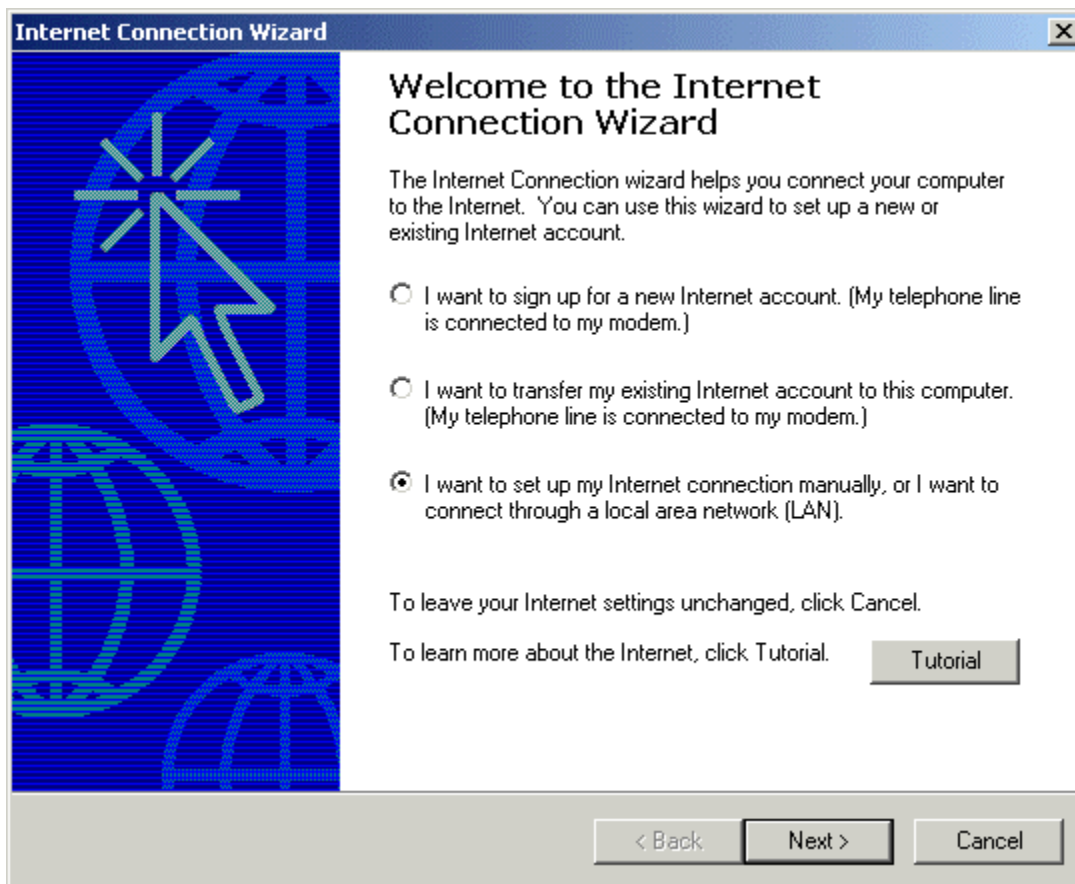
4. Click the **Next** button.



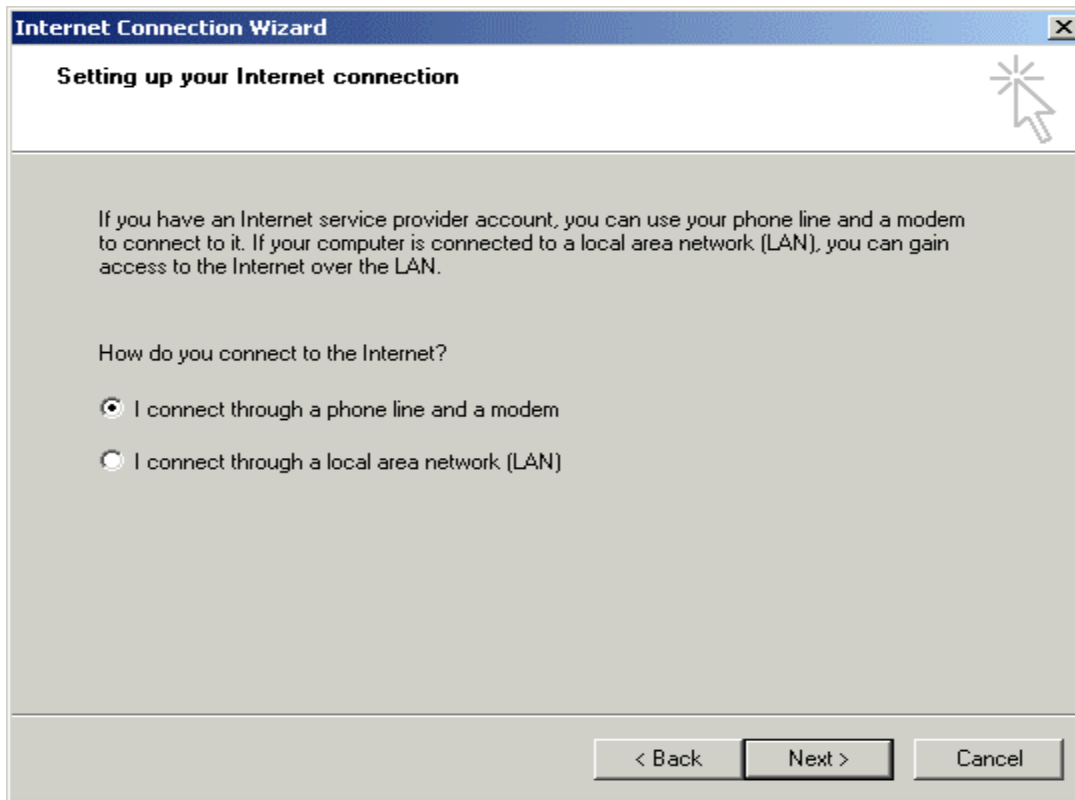
5. Select **Dial-up to the Internet**.
6. Click the **Next** button.



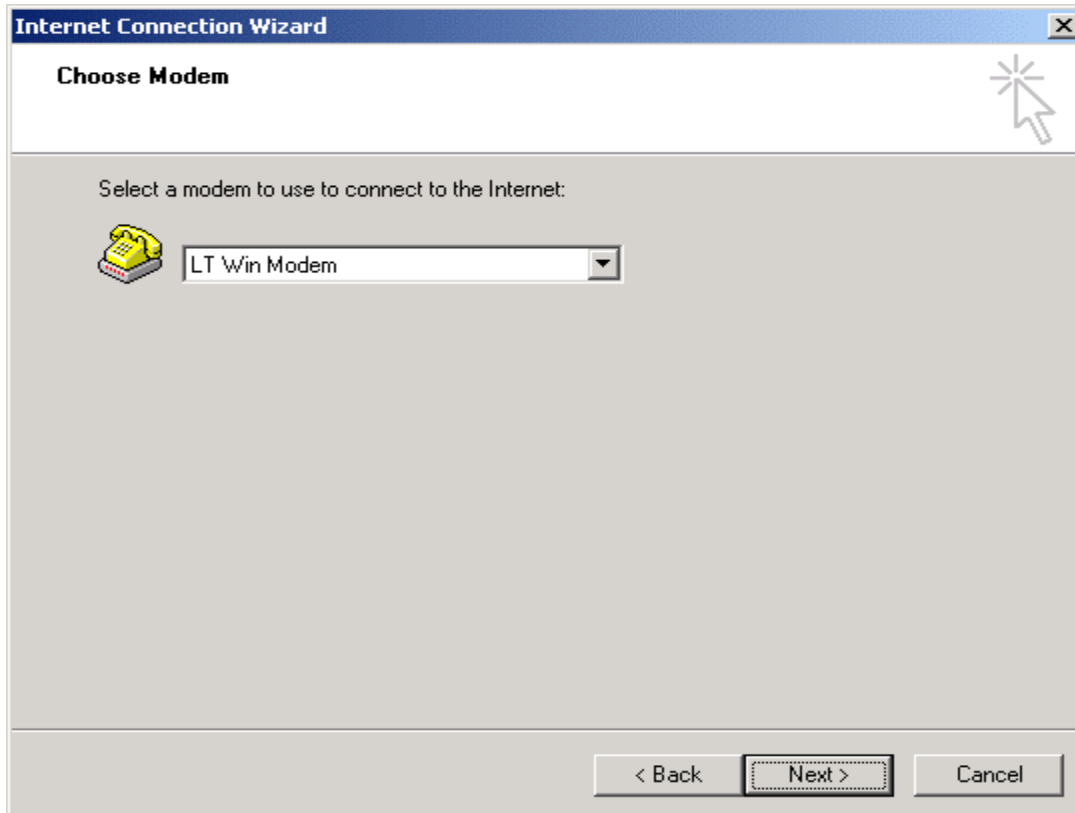
7. Select **I want to set up my Internet connection manually, or I want to connect through a local area network (LAN)**.
8. Click the **Next** button.



9. Select **I connect through a phone line and a modem**.
10. Click the **Next** button.



11. Click the down arrow on the **Select a modem to use to connect to the Internet** drop-down list and choose your modem.
12. Click the **Next** button.



13. Uncheck the "Use area code and dialing rules" option
14. In the **Telephone number** field, type your local access number.
15. Click the **Next** button.

The screenshot shows the 'Internet Connection Wizard' window at Step 1 of 3. The title bar reads 'Internet Connection Wizard'. The main heading is 'Step 1 of 3: Internet account connection information'. Below the heading, there is a mouse cursor icon. The main area contains the following fields and controls:

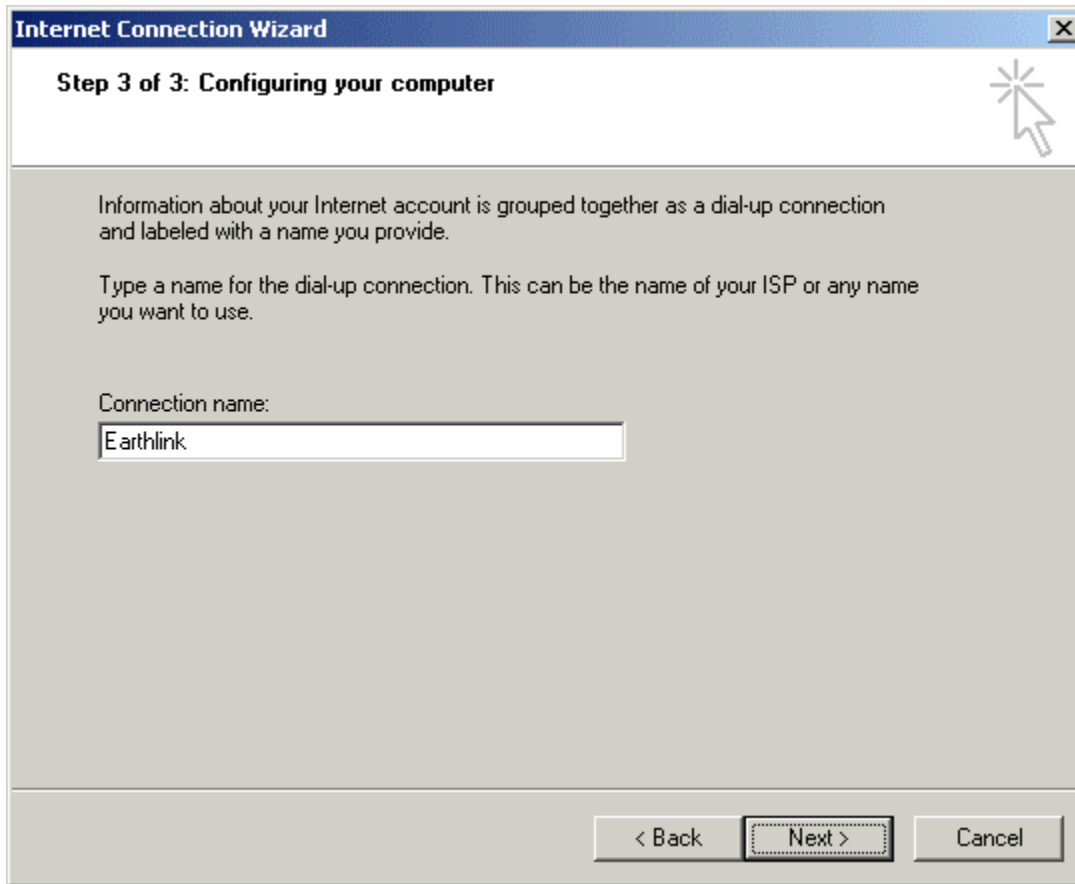
- Text: 'Type the phone number you dial to connect to your ISP.'
- Area code:  - Telephone number:
- Country/region name and code:
- Use area code and dialing rules
- Text: 'To configure connection properties, click Advanced. (Most ISPs do not require advanced settings.)' followed by an 'Advanced...' button.
- Navigation buttons at the bottom: '< Back', 'Next >', and 'Cancel'.

16. In the **User name** field, type your user name.
17. In the **Password** field, type your password.
18. Click the **Next** button.

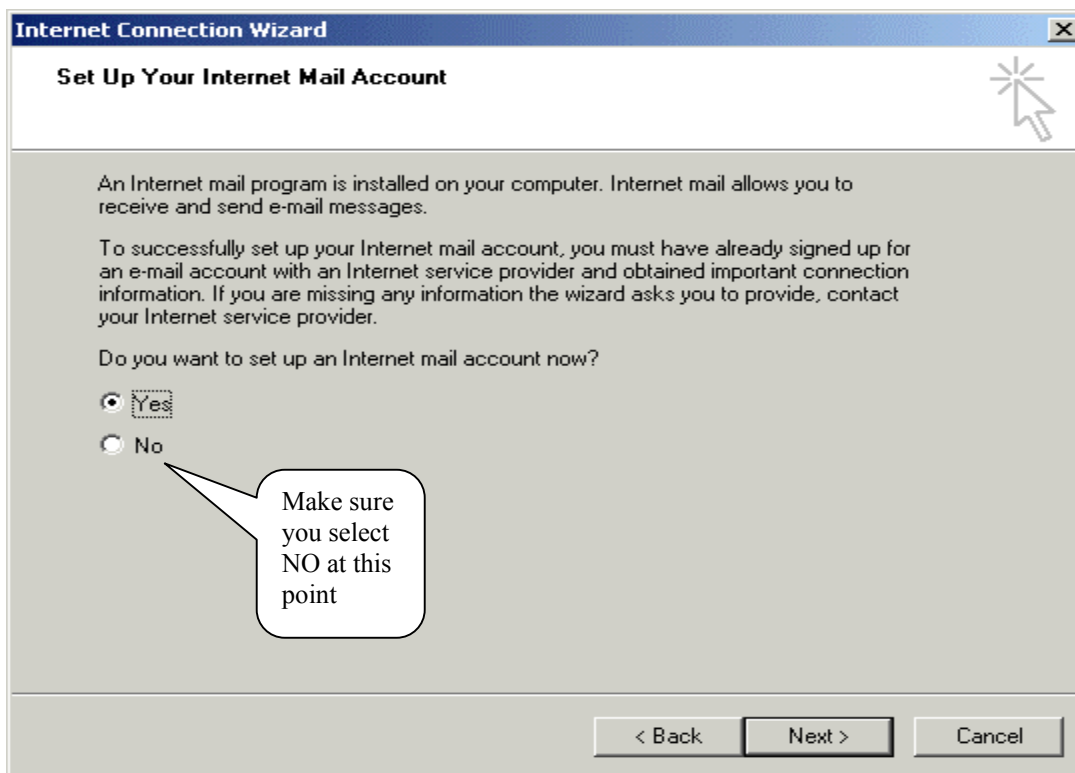
The screenshot shows the 'Internet Connection Wizard' window at Step 2 of 3. The title bar reads 'Internet Connection Wizard'. The main heading is 'Step 2 of 3: Internet account logon information'. Below the heading, there is a mouse cursor icon. The main area contains the following fields and controls:

- Text: 'Type the user name and password you use to log on to your ISP. Your user name may also be referred to as your Member ID or User ID. If you do not know this information, contact your ISP.'
- User name:
- Password:
- Navigation buttons at the bottom: '< Back', 'Next >', and 'Cancel'.

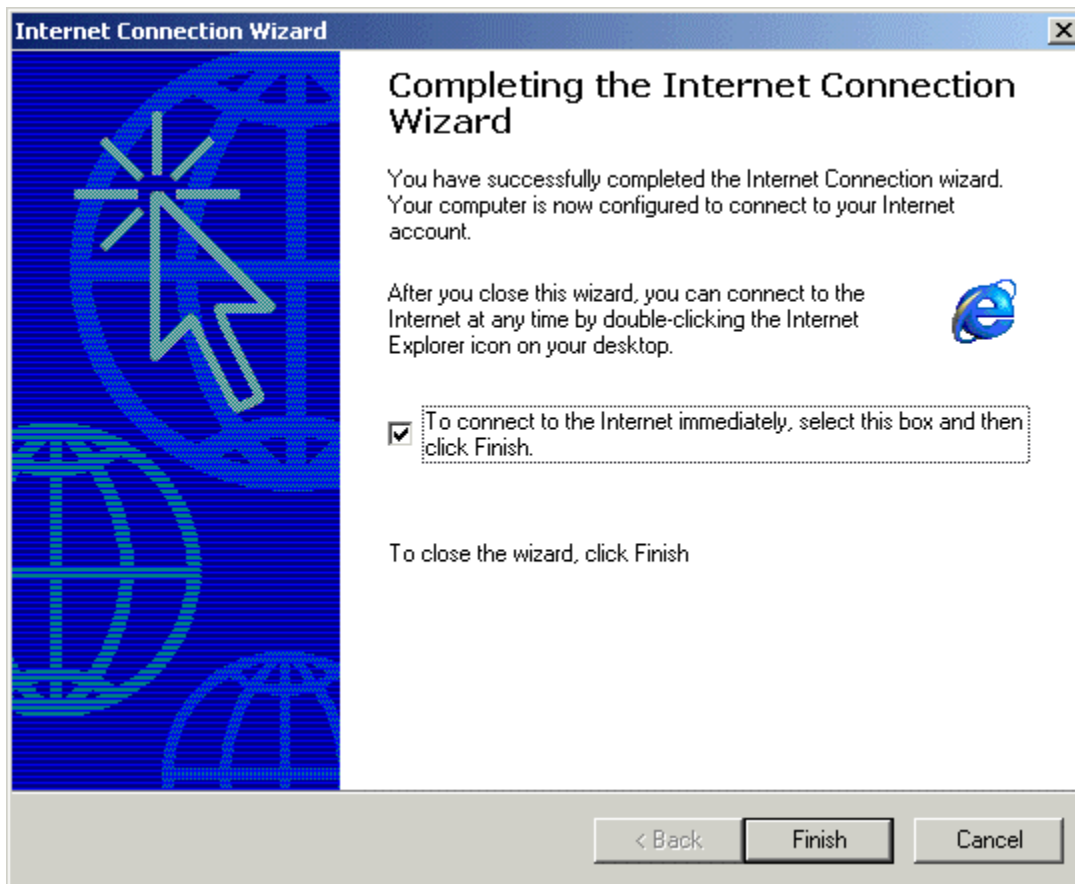
19. In the **Connection Name** field, type your domain name (i.e. EarthLink).
20. Click the **Next** button.



21. Click the **No** radio button in the **Do you want to set up an Internet mail account now** area.
22. Click the **Next** button.



23. Check the box next to **To connect to the Internet immediately...**if you would like to connect right away to the Internet.
24. Click the **Finish** button.



You have successfully configured Windows 2000 to connect to the Internet.