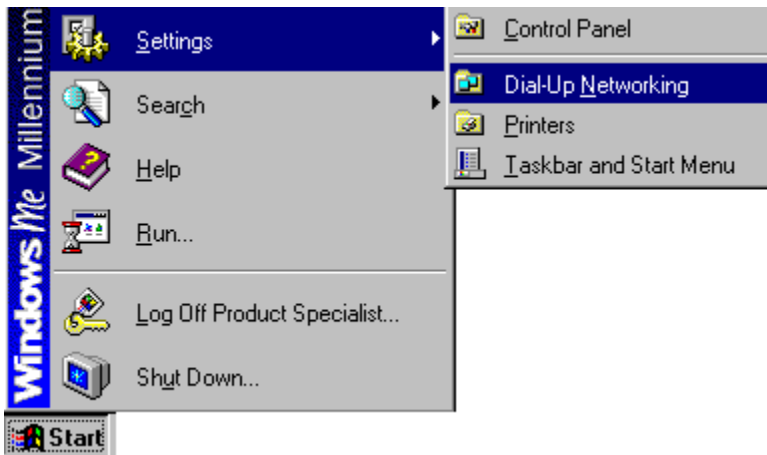


How to configure Dial-Up Networking to connect on Windows ME or 98

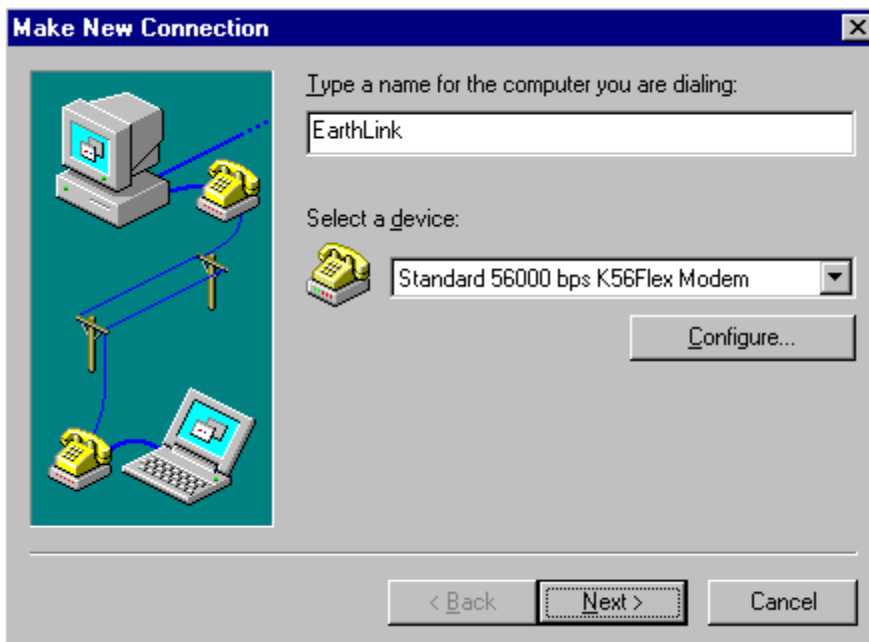
1. From the **Start** menu, click **Settings**, and choose **Dial-Up Networking**.



2. Double-click the **Make New Connection** icon.



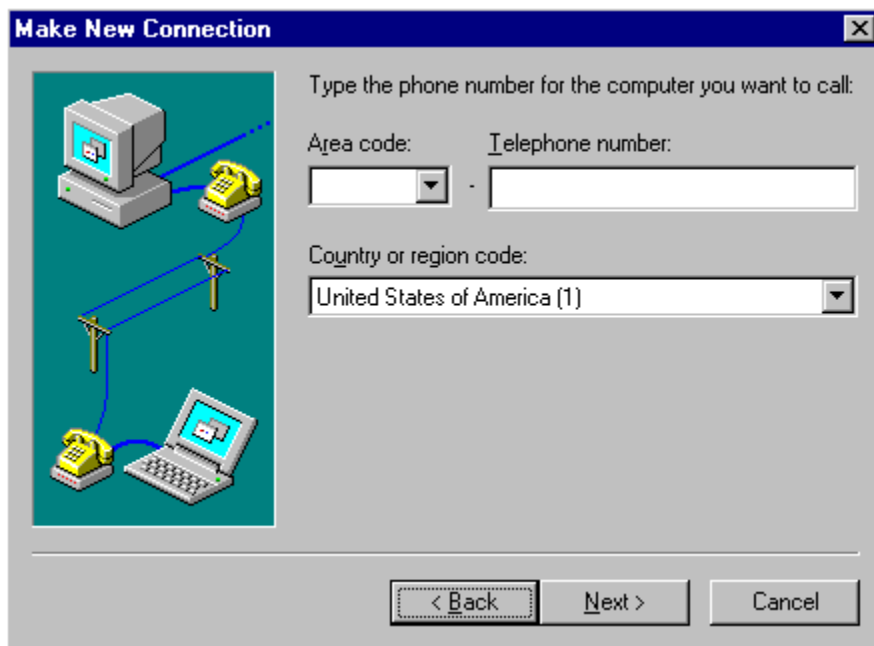
3. In the **Type a name for the computer you are dialing** field, i.e. type EarthLink.
4. Click the down arrow on the **Select a device** drop-down list and choose your modem you want to use to connect.
5. Click the **Next** button.



6. In the **Area code** field, type in your local area code.
7. In the **Telephone number** field, type your access number.

Note: Remember to check with your local telephone company to make sure that the number you choose is a local toll-free call.

- Click the **Next** button.



- Click the **Finish** button.

