

Create a New Dial-Up Networking Connection On Windows 95



- **Operating System:** Windows 95
- **Application:** Dial-Up Networking

1. Double-click the **My Computer** icon.



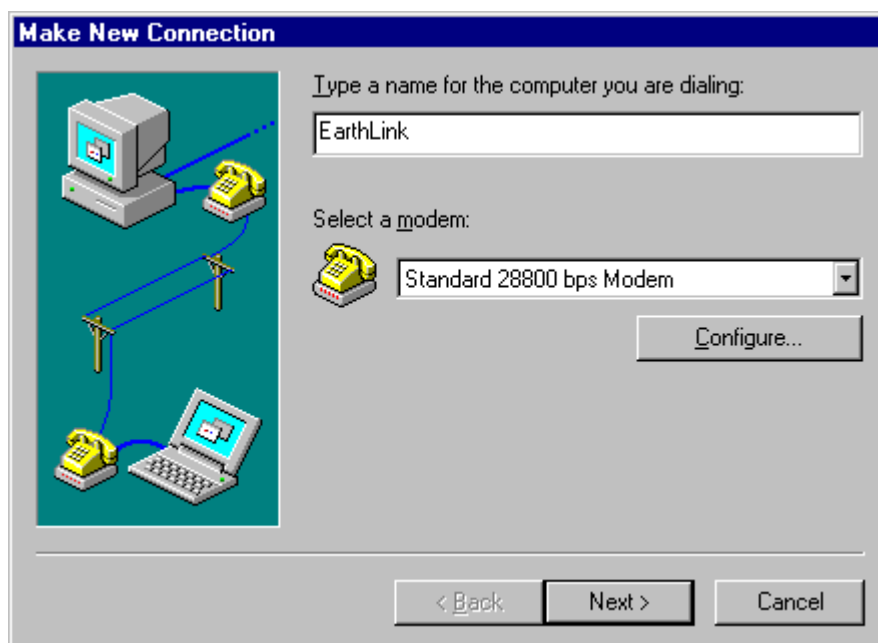
2. Double-click the **Dial-Up Networking** folder.



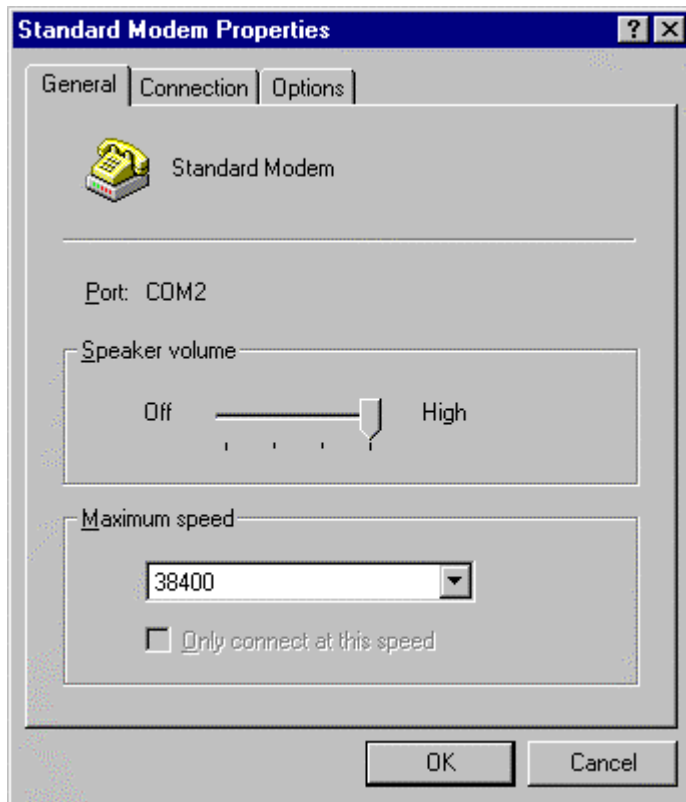
3. Double-click the **Make New Connection** icon.



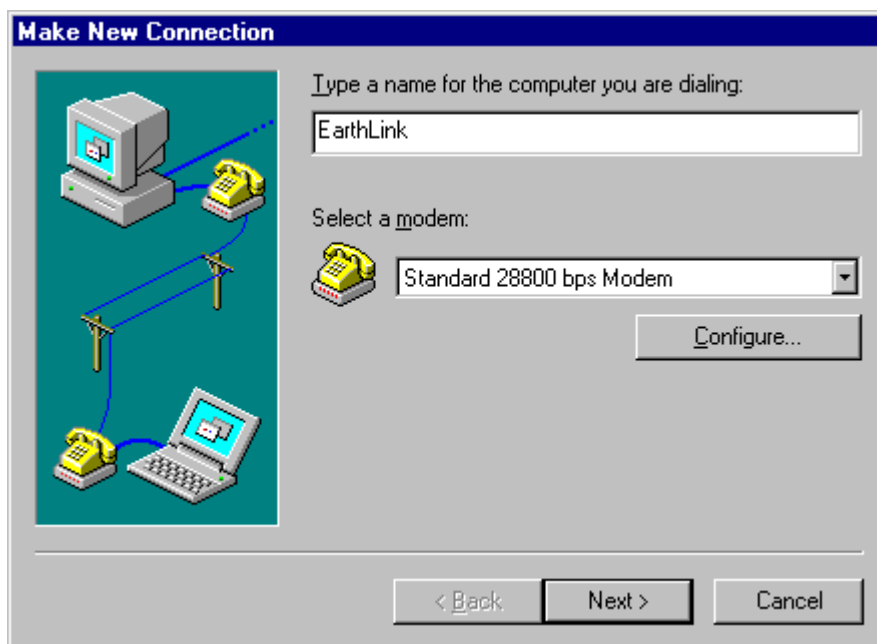
4. Under **Type a name for the computer you are dialing**, i.e. type **EarthLink**
5. Click the **Configure** button.



6. Check that the appropriate speed for your modem (for 14.4 modems use **19200**, for 28.8 modems use **38400** and for 33.6 and 56K modems, use **57600**.)
7. Make sure that **Only connect at this speed** is not checked.
8. Click the **OK** button.



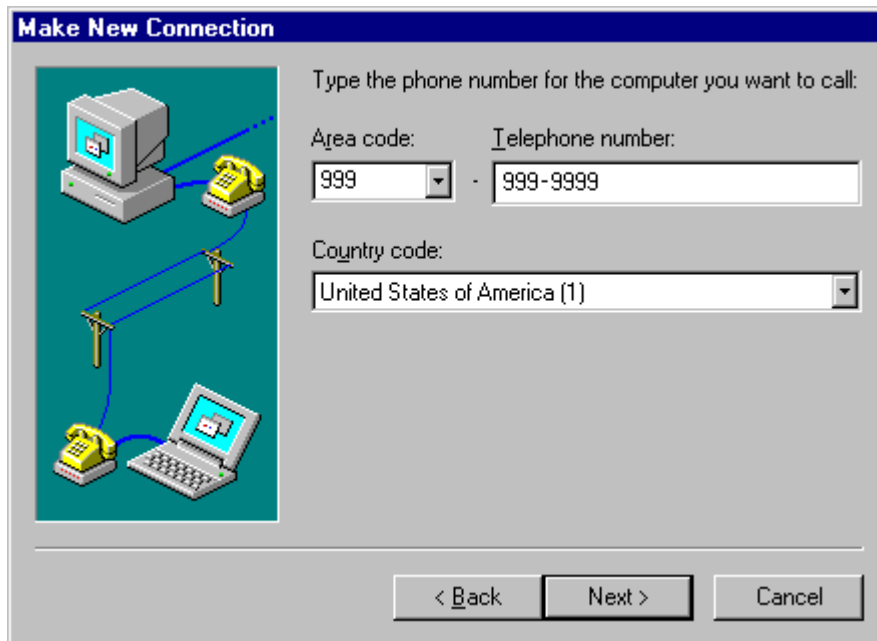
9. Click the **Next** button.



10. In the **Area code** and **Telephone number** text boxes, type your access number.

Note: Remember to check with your local telephone company to make sure that the number you choose is a local toll-free call.

11. Click the **Next** button.



12. Click the **Finish** button.

