

How to Create a Dial Up in Windows NT

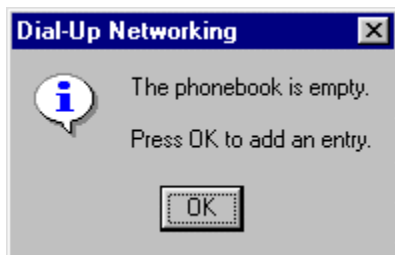
1. Double-click the **My Computer** icon.



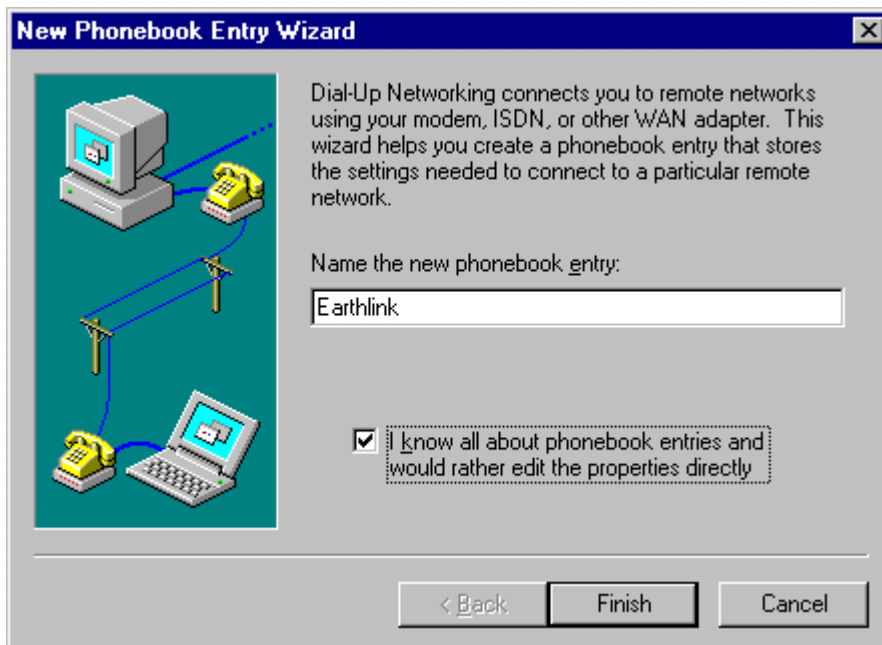
2. Double-click the **Dial-Up Networking** icon.



3. Click the **OK** button.



4. In the **Name the new phonebook entry** box, type EarthLink.
5. Check the box next to **I know all about phonebook entries and would rather edit the properties directly**.
6. Click the **Finish** button.

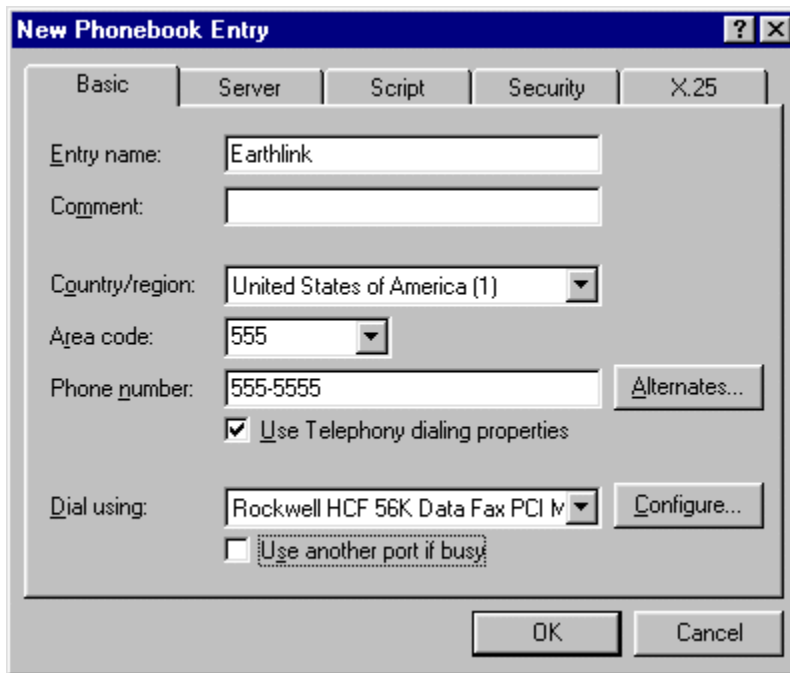


7. Check the box next to **Use Telephony dialing properties**.
8. In the **Area Code** box, type your area code.

9. In the **Phone number** box, type your local access number.

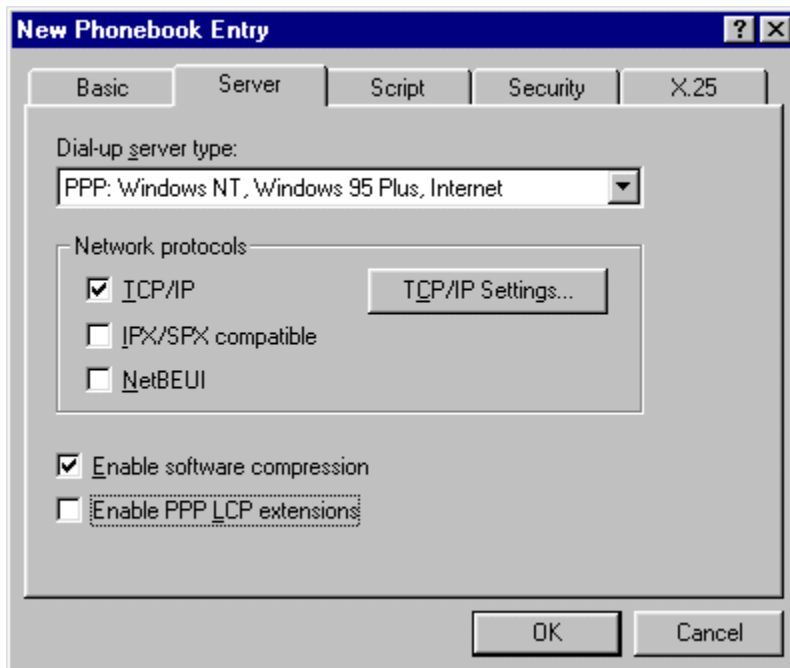
Note: Remember to check with your local telephone company to make sure that the number you choose is a local toll-free call.

10. Uncheck the box next to **Use another port if busy**.



The screenshot shows the 'New Phonebook Entry' dialog box with the 'Basic' tab selected. The 'Entry name' field contains 'Earthlink'. The 'Country/region' dropdown is set to 'United States of America (1)' and the 'Area code' dropdown is set to '555'. The 'Phone number' field contains '555-5555'. The 'Use Telephony dialing properties' checkbox is checked. The 'Dial using' dropdown is set to 'Rockwell HCF 56K Data Fax PCI M'. The 'Use another port if busy' checkbox is unchecked. The 'OK' and 'Cancel' buttons are at the bottom.

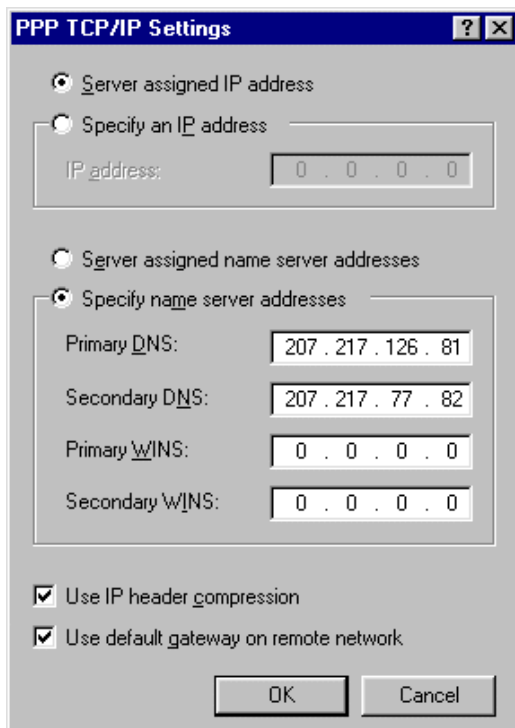
11. Click on the **Server** tab.
12. Uncheck the box next to **Enable PPP LCP extensions**.
13. Click the **TCP/IP Settings...** button.



The screenshot shows the 'New Phonebook Entry' dialog box with the 'Server' tab selected. The 'Dial-up server type' dropdown is set to 'PPP: Windows NT, Windows 95 Plus, Internet'. The 'Network protocols' section has the 'TCP/IP' checkbox checked, and the 'TCP/IP Settings...' button is visible. The 'IPX/SPX compatible' and 'NetBEUI' checkboxes are unchecked. The 'Enable software compression' checkbox is checked, and the 'Enable PPP LCP extensions' checkbox is unchecked. The 'OK' and 'Cancel' buttons are at the bottom.

14. Click the **Specify name server addresses** radio button in the **PPP TCP/IP Settings** area.
15. In the **Primary DNS** field, type a DNS server specific to your domain (i.e. 207.217.126.81 for EarthLink).
16. In the **Secondary DNS** field, type another DNS server specific to your domain (i.e. 207.217.077.82 for EarthLink).

17. Click the **OK** button.



18. Click on the **Security** tab.

19. Click the **Accept any authentication including clear text** radio button in the **Authentication and encryption policy** area.

20. Click the **OK** button.

