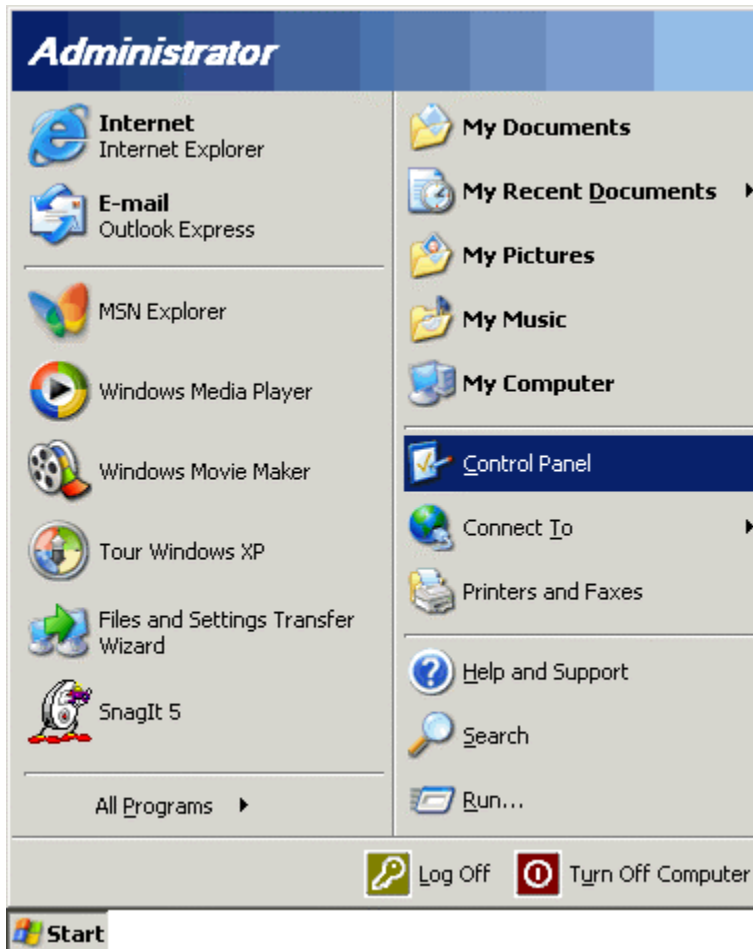
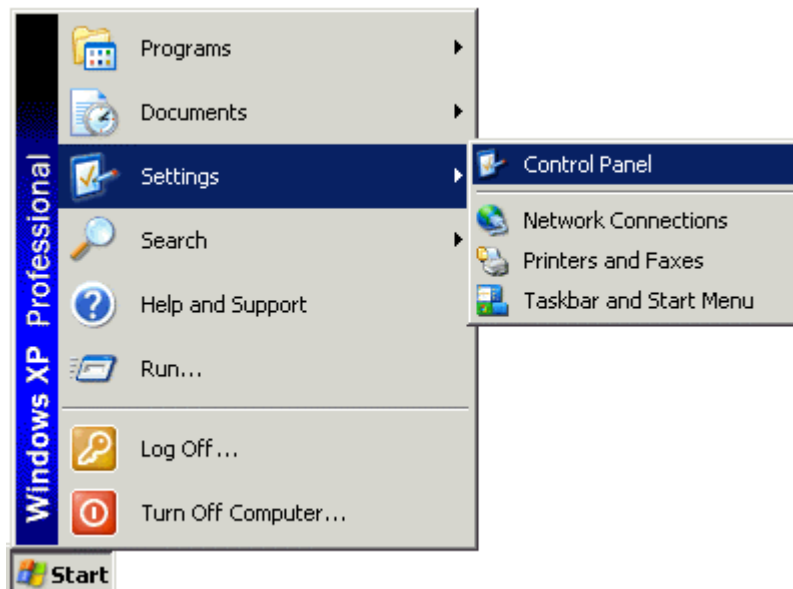


## How to Create a Dial-Up Connection in Windows XP

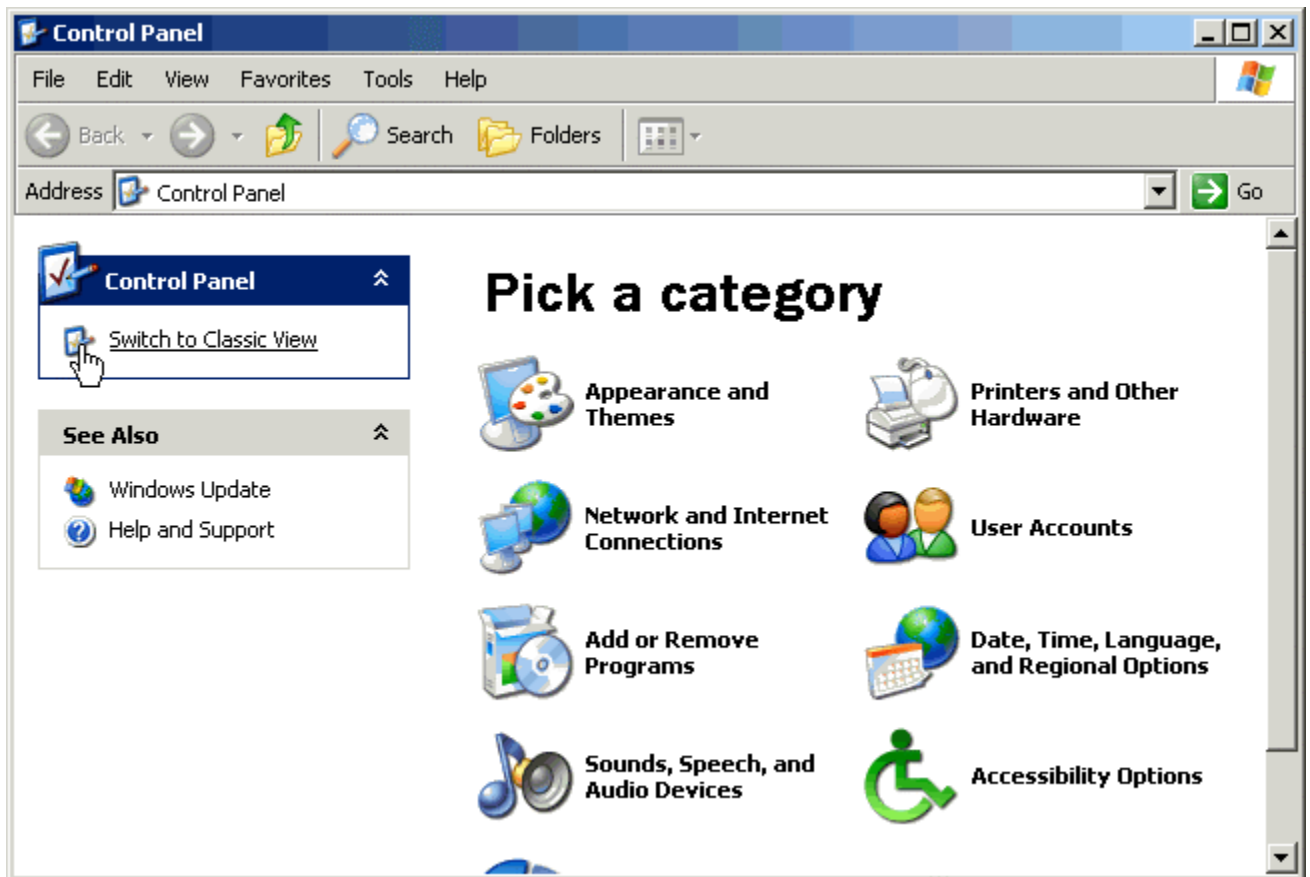
1. From the **Start** menu, choose **Control Panel**.



**Note:** If you are running Windows XP in classic mode, you will need to select the **Start** menu, select **Settings**, then choose **Control Panel**



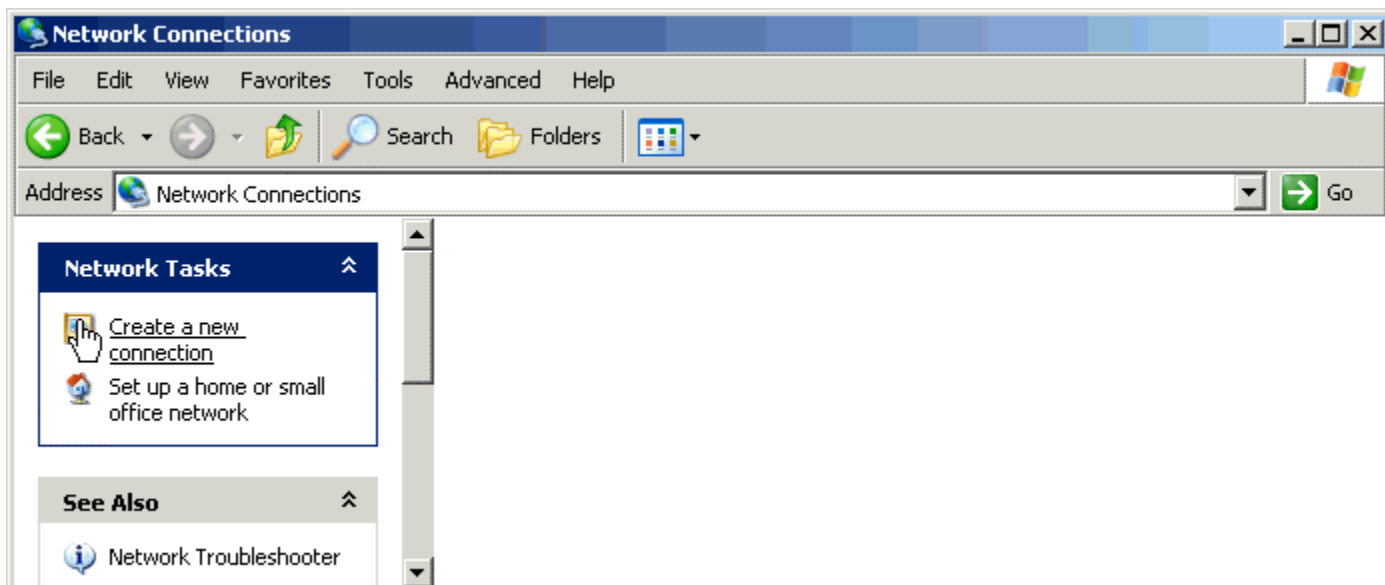
2. Click the **Switch to Classic View** icon.



3. Double-click the **Network Connections** icon.



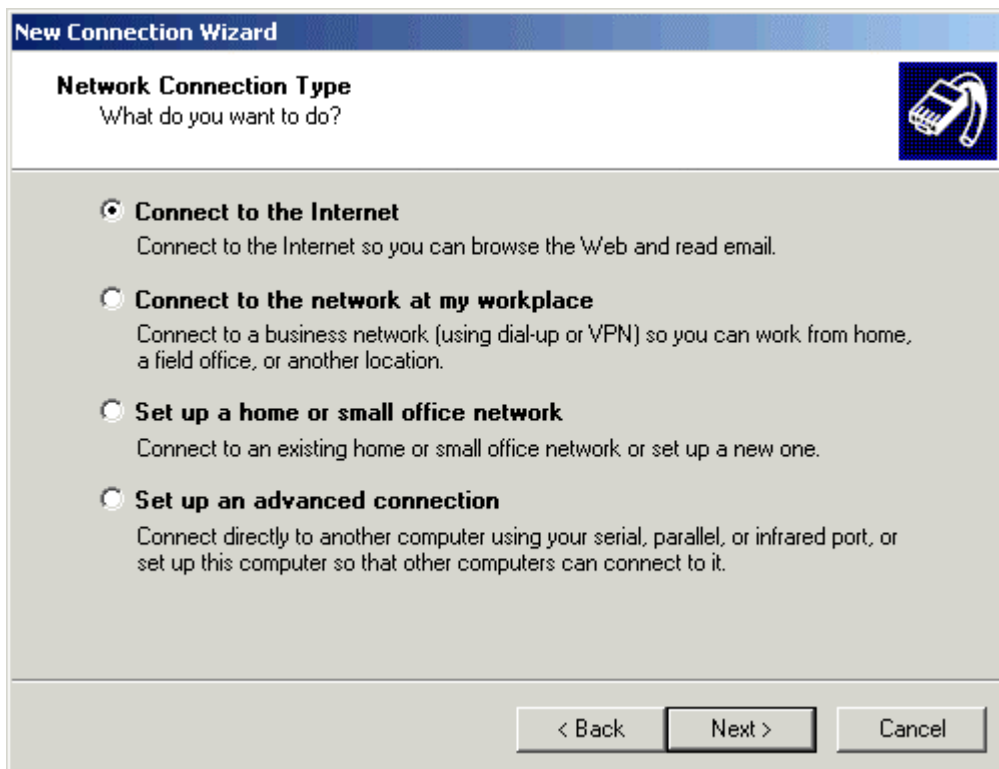
4. Click the **Create a new connection** icon.



5. Click the **Next** button.



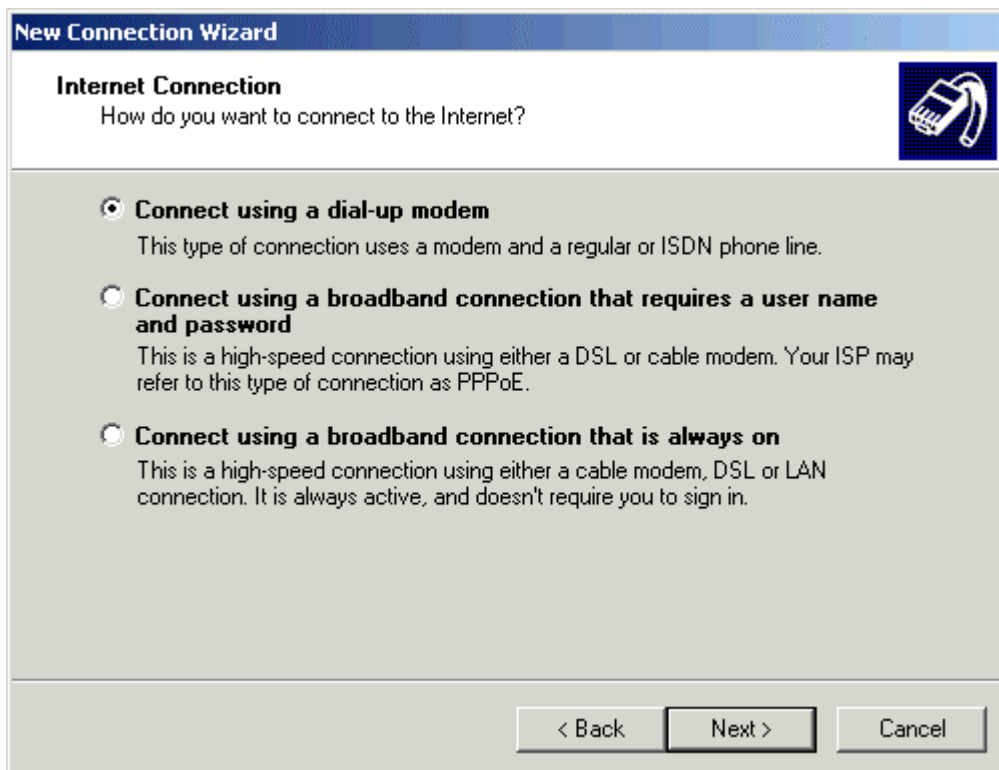
6. Select **Connect to the Internet**.
7. Click the **Next** button.



8. Select **Set up my connection manually**.
9. Click the **Next** button.




10. Select **Connect using a dial-up modem**.
11. Click the **Next** button.



12. In the **ISP Name** field, type a name to identify your connection (ie. EarthLink).
13. Click the **Next** button.

**New Connection Wizard**

**Connection Name**  
What is the name of the service that provides your Internet connection?



Type the name of your ISP in the following box.

ISP Name

The name you type here will be the name of the connection you are creating.

< Back   Next >   Cancel

14. In the **Phone number** field, type your local access number exactly as it needs to be dialed.


**Note:** If you require 10-digit dialing in order to access a local number, make sure to include your area code.

**Note:** Remember to check with your local telephone company to make sure that the number you choose is a local toll-free call.

15. Click the **Next** button.

**New Connection Wizard**

**Phone Number to Dial**  
What is your ISP's phone number?



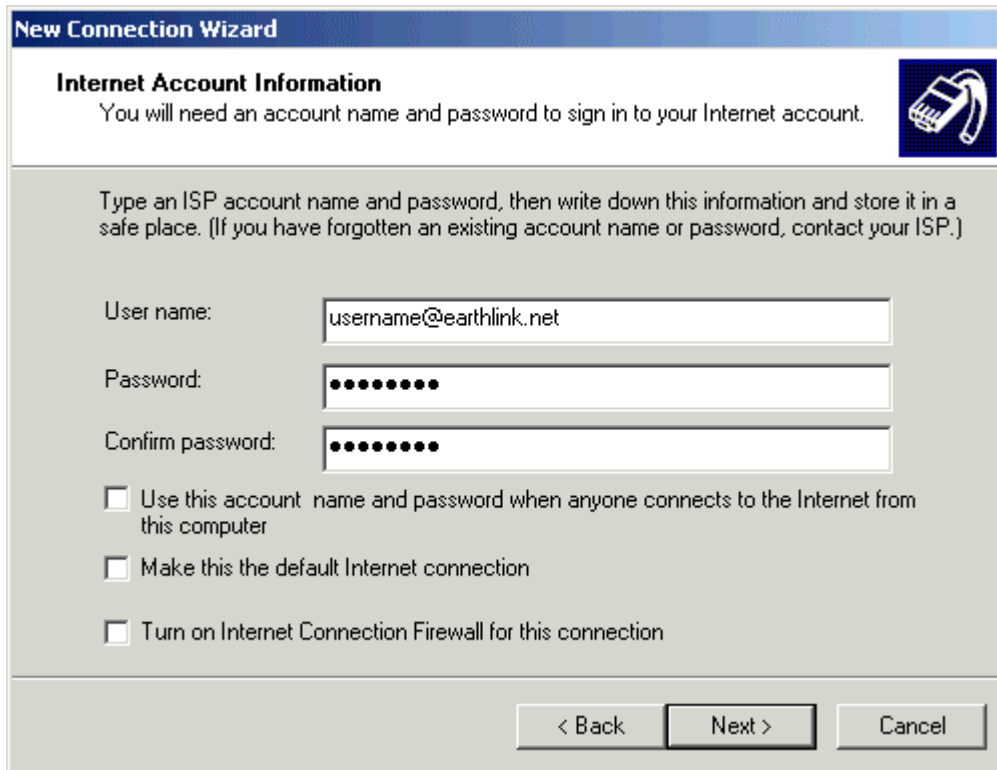
Type the phone number below.

Phone number:

You might need to include a "1" or the area code, or both. If you are not sure you need the extra numbers, dial the phone number on your telephone. If you hear a modem sound, the number dialed is correct.

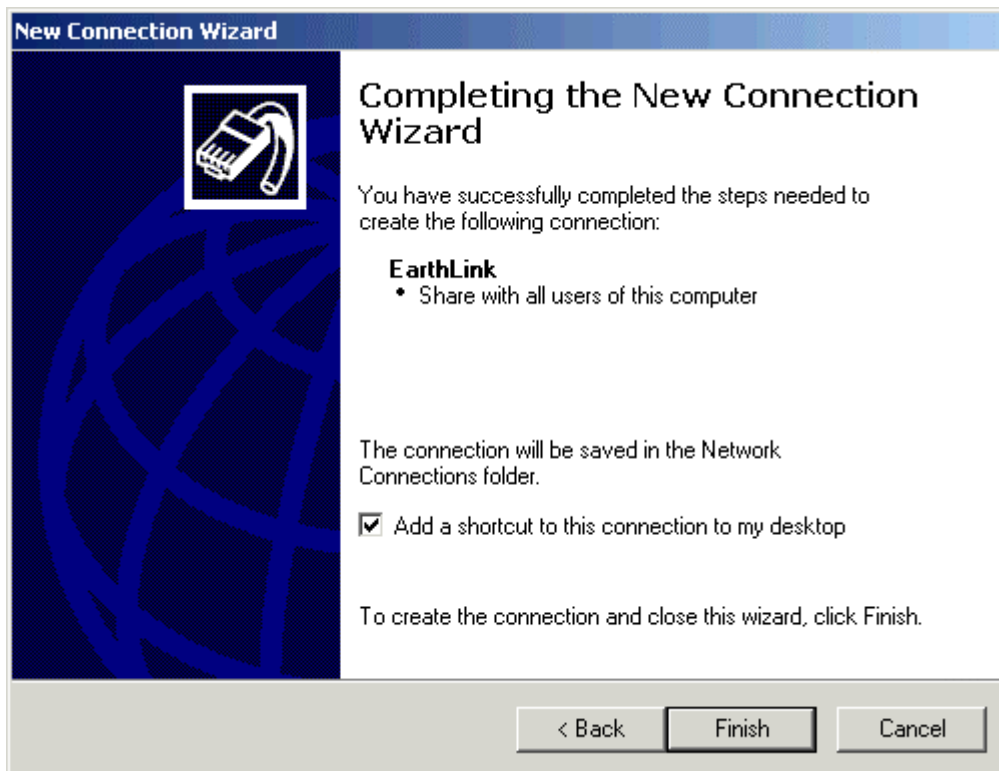
< Back   Next >   Cancel

16. In the **User name** field, type your email address.
17. In the **Password** field, type your password.
18. In the **Confirm password** field, type your password.
19. Uncheck the box next to **Use this account name and password when anyone connects to the Internet from this computer**.
20. Uncheck the box next to **Make this the default Internet connection**.
21. Uncheck the box next to **Turn on Internet Connection Firewall for this connection**.
22. Click the **Next** button.



The screenshot shows a Windows-style dialog box titled "New Connection Wizard" with a blue header bar. Below the header, the title "Internet Account Information" is displayed in bold, followed by the instruction: "You will need an account name and password to sign in to your Internet account." To the right of this text is a small icon of a mobile phone. Below the instruction, there is a paragraph of text: "Type an ISP account name and password, then write down this information and store it in a safe place. (If you have forgotten an existing account name or password, contact your ISP.)" There are three input fields: "User name:" containing "username@earthlink.net", "Password:" containing ten black dots, and "Confirm password:" containing ten black dots. Below the input fields are three unchecked checkboxes with the following labels: "Use this account name and password when anyone connects to the Internet from this computer", "Make this the default Internet connection", and "Turn on Internet Connection Firewall for this connection". At the bottom of the dialog box are three buttons: "< Back", "Next >", and "Cancel".

23. Check the box next to **Add a shortcut to this connection to my desktop** if you wish to have a shortcut to the connection on your desktop.
24. Click the **Finish** button.



25. Close all windows.