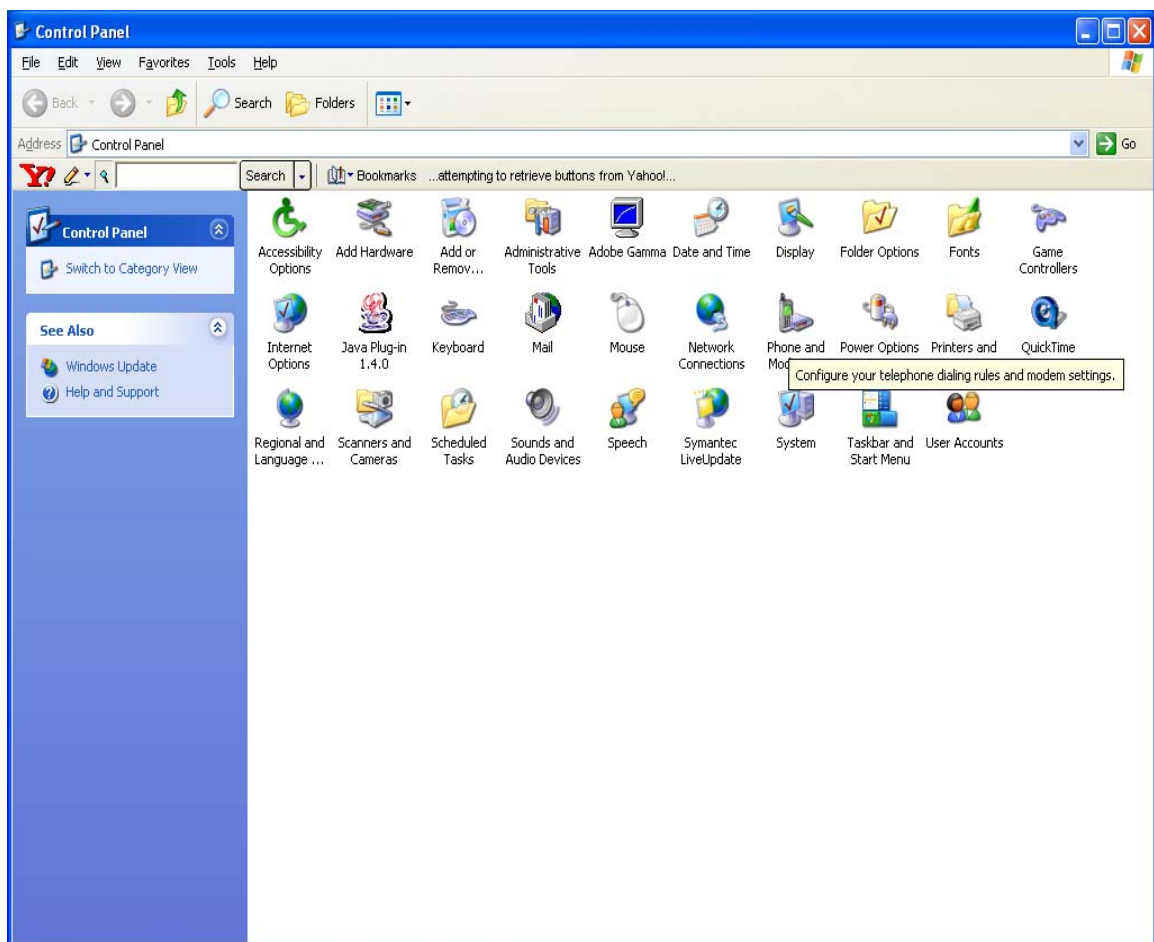
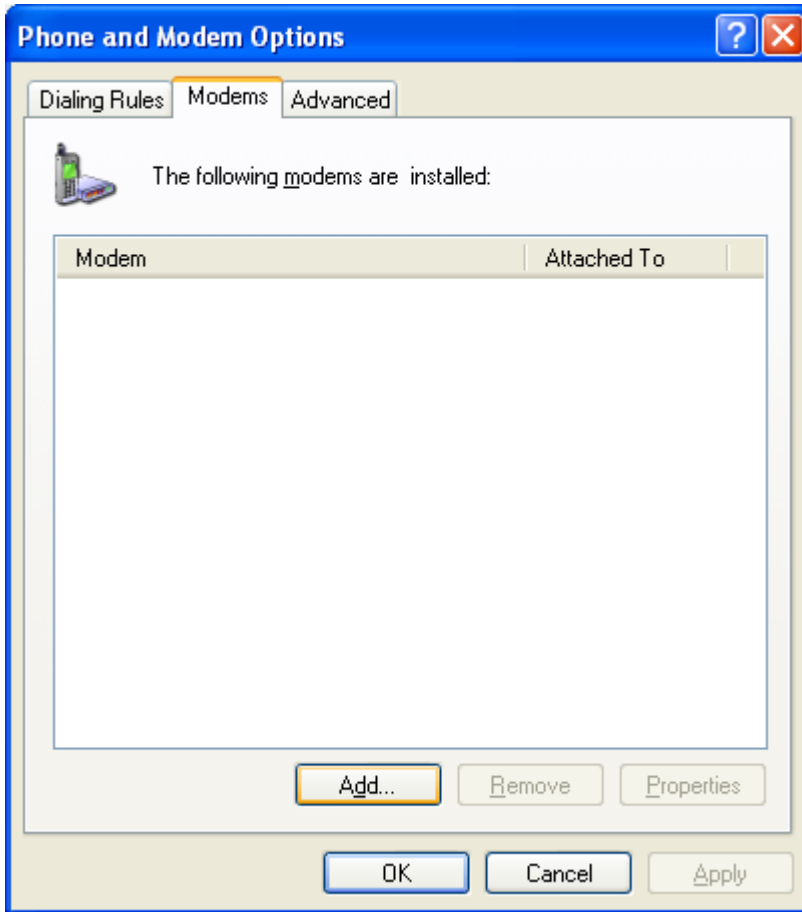


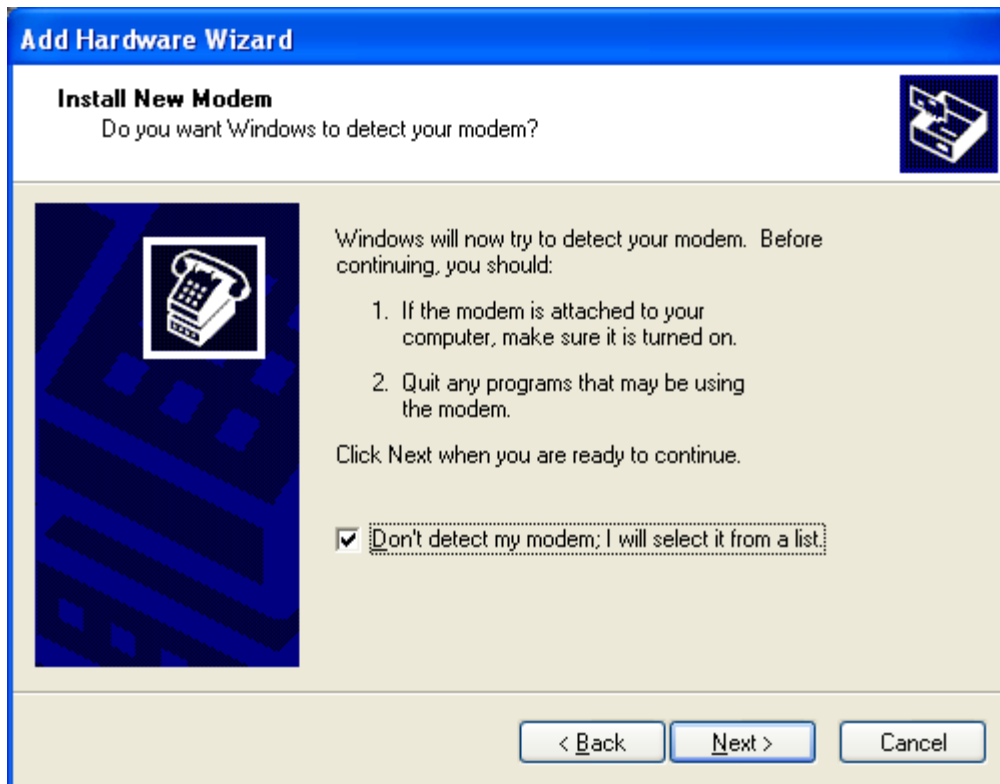
Installing Phone as Modem with Serial Connection

- 1) Install phone as modem by connecting the phone to the cable and the cable to the PC.
- 2) Insert the True Sync CD into the CD-ROM drive, when the program starts close it.
- 3) Go to the Modem Properties Screen in the Control Panel.
 - A) In Win 2K, ME, XP locate and double left click on Phone and Modem Options then left click the Modem Tab.
 - B) If Win 95, 98, & NT double left click on Modems.

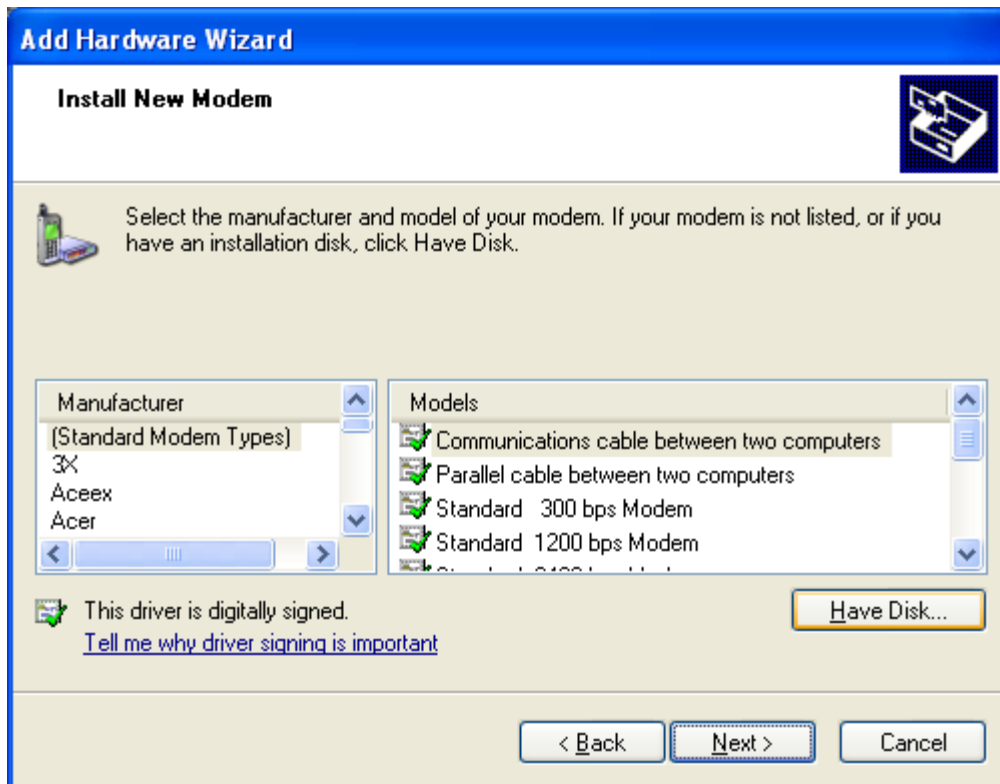




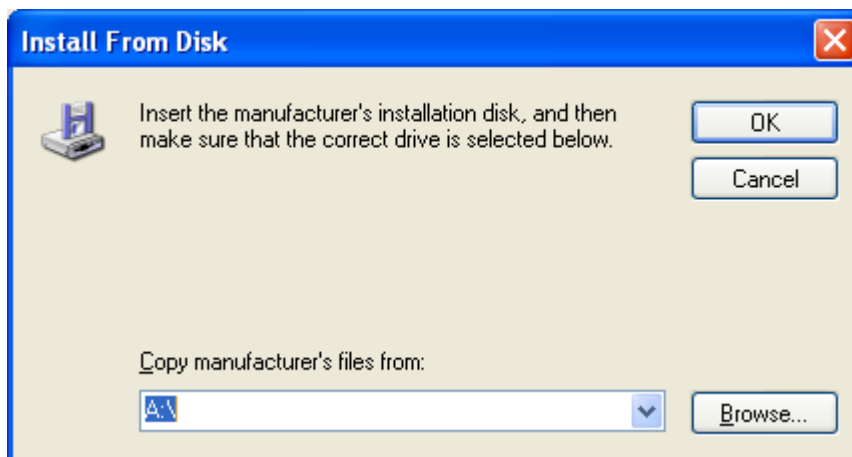
- 4) Left click on the Add button. If the screen appears asking for type of Modem select "Other", and then left click Next.



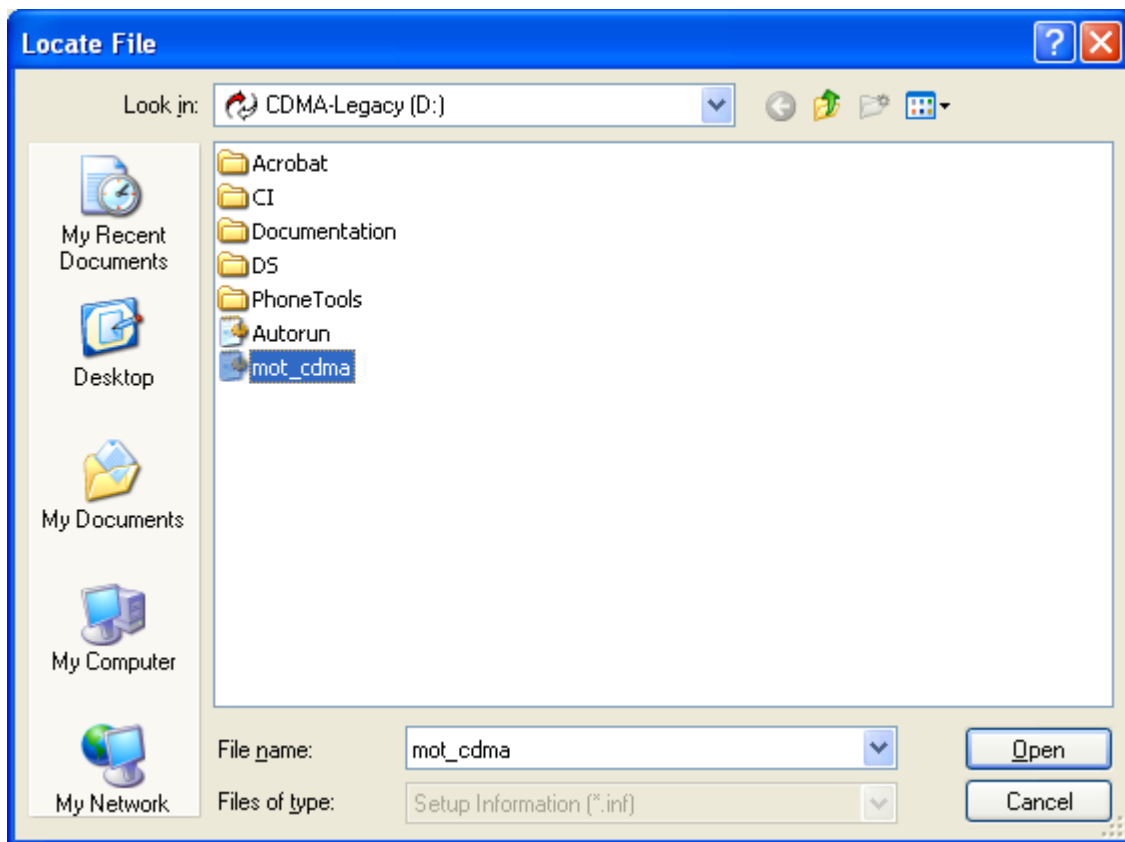
5) Then select "Don't detect my Modem I will select it from a list" and left click Next again.



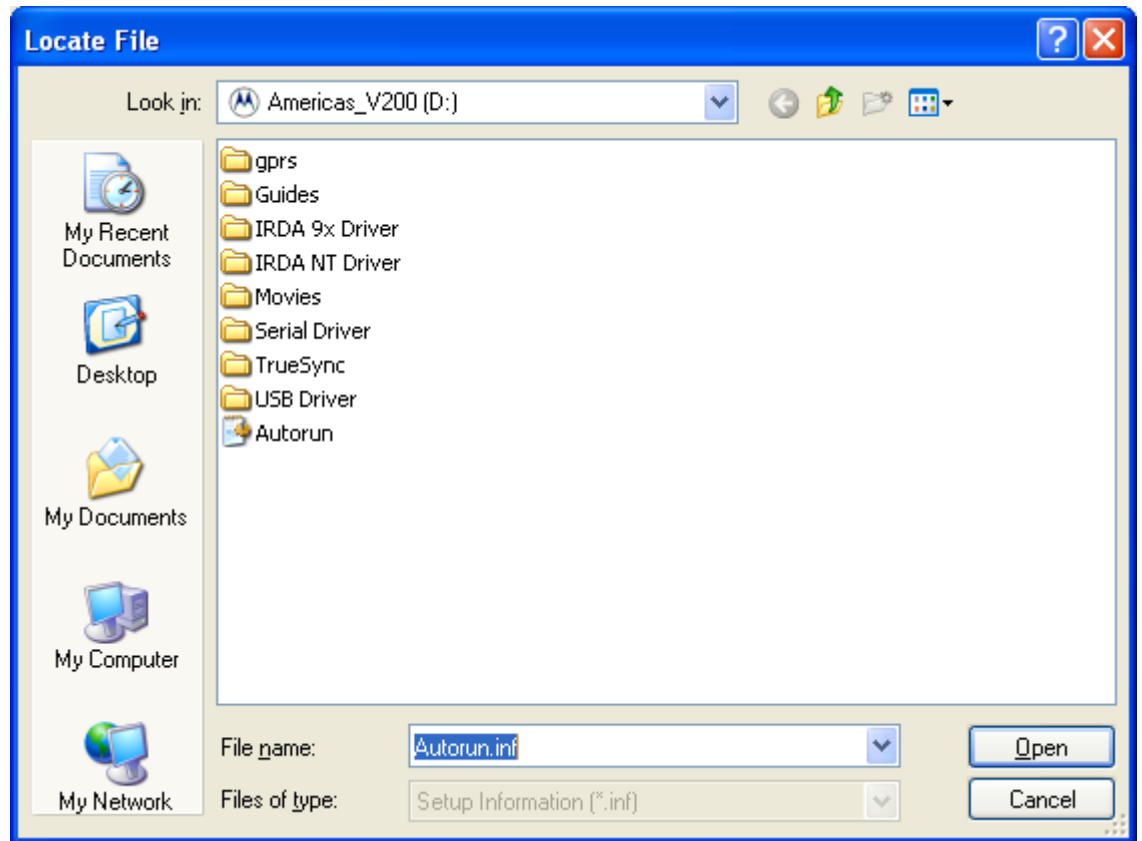
- 6) Then left click on the "Have Disk" button at the bottom right.



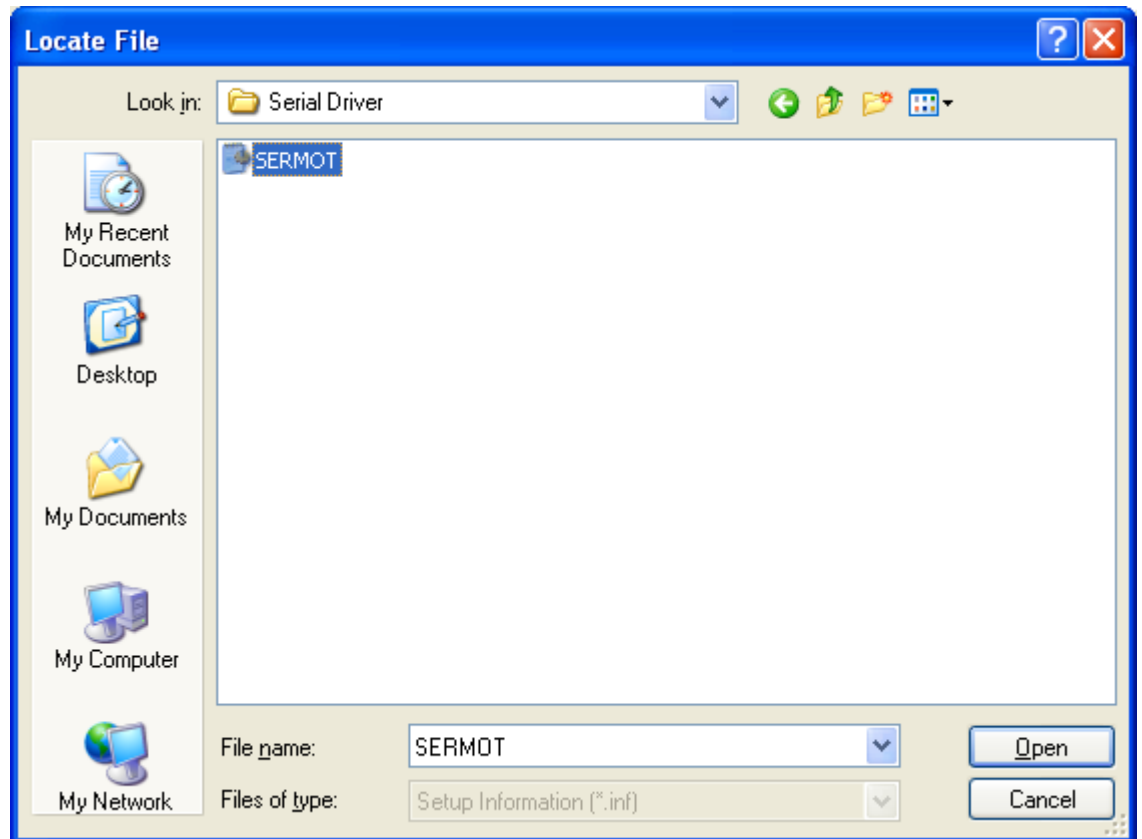
- 7) Type X:\ Where X is the CD drive where the CD is loaded into and left click on the OK button.



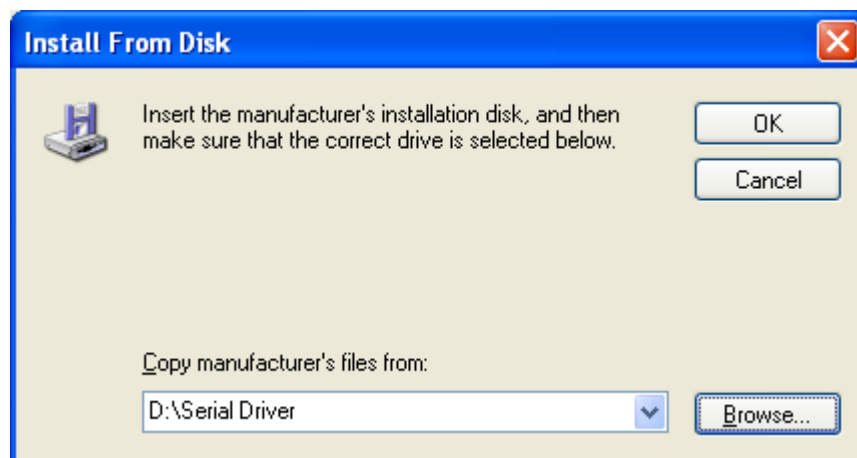
- A) For old Legacy CDMA phones (StarTac, V8160, Timeport P8767, etc...), left click on mot_cdma to highlight it and left click Open.



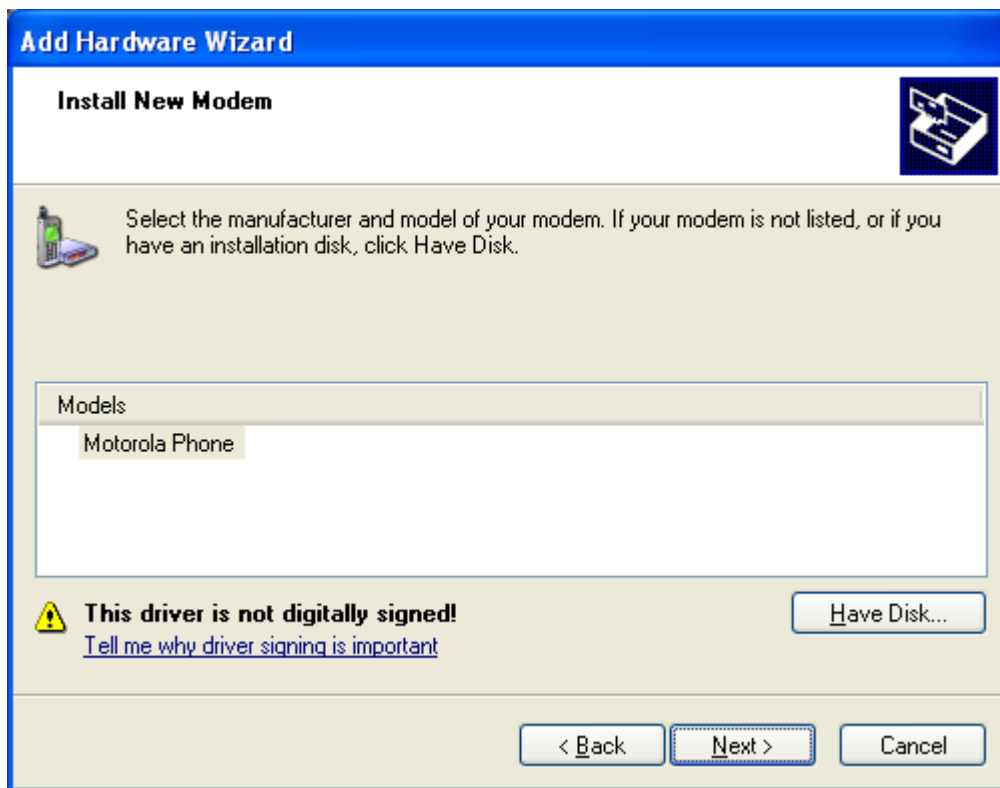
B) 1) For P2K phones, double left click on the Serial Driver folder to open it.



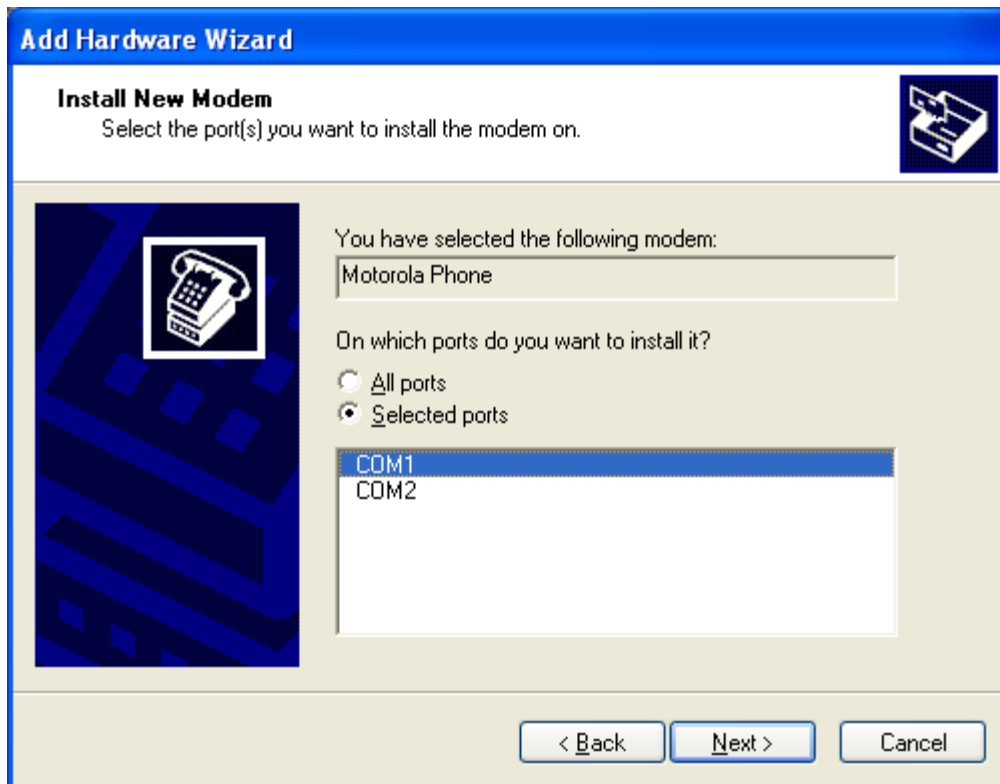
B) 2) Left click on the SERMONT file and left click Next.



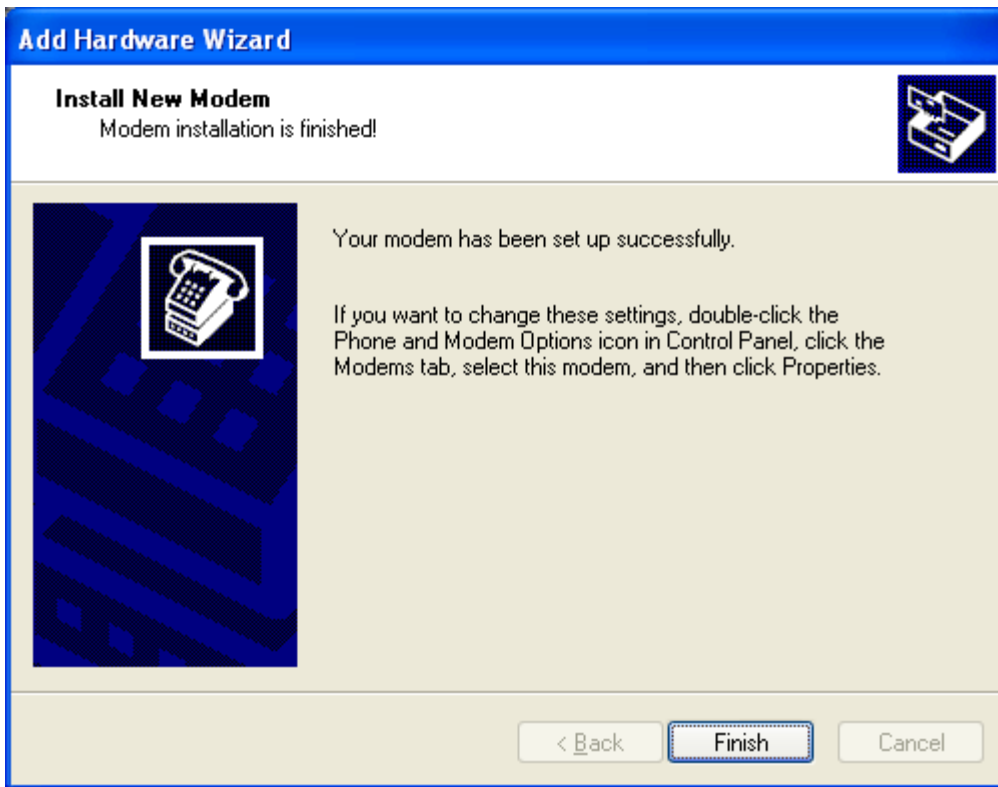
8) Left click on the OK button.



9) Left click on the Next button.



- 10) Select "selected ports" and then select the COM port that you are connecting the phone to.
- 11) Left click on Next. (If the "Not Digitally Signed" error appears then left click on "Continue Anyway".)



12) Click on Finish.

