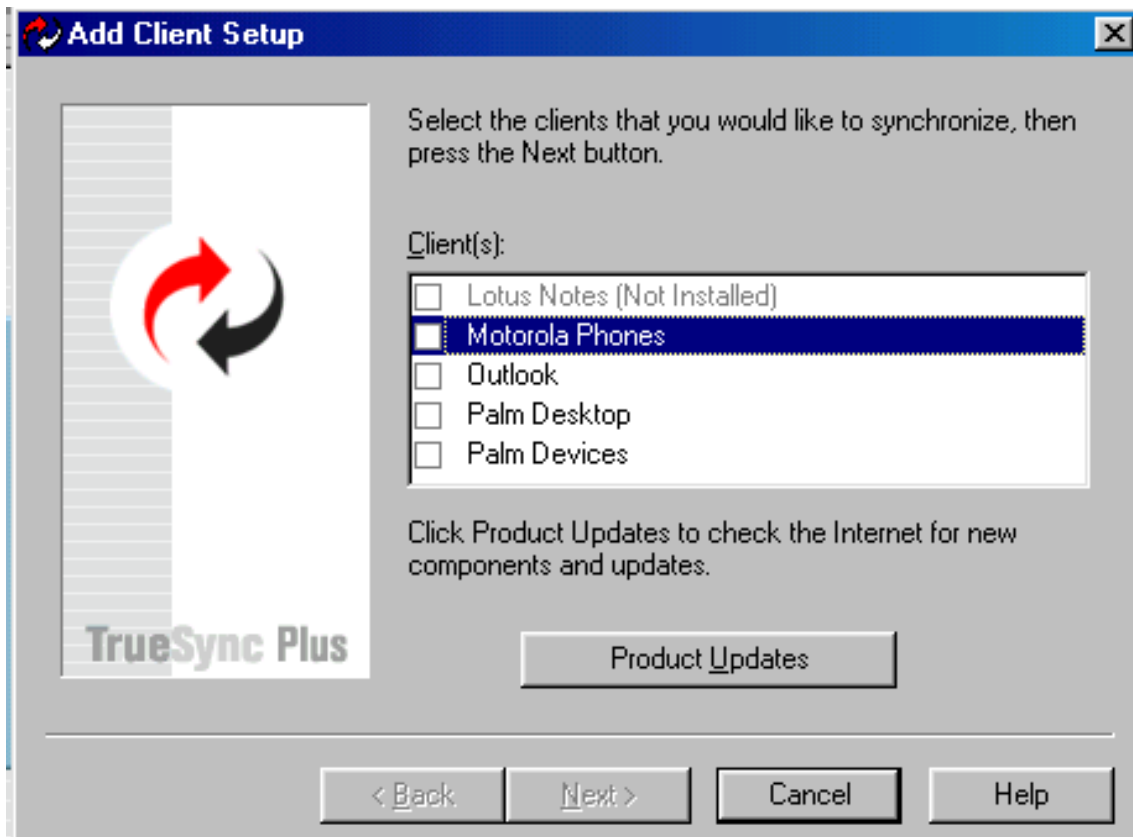


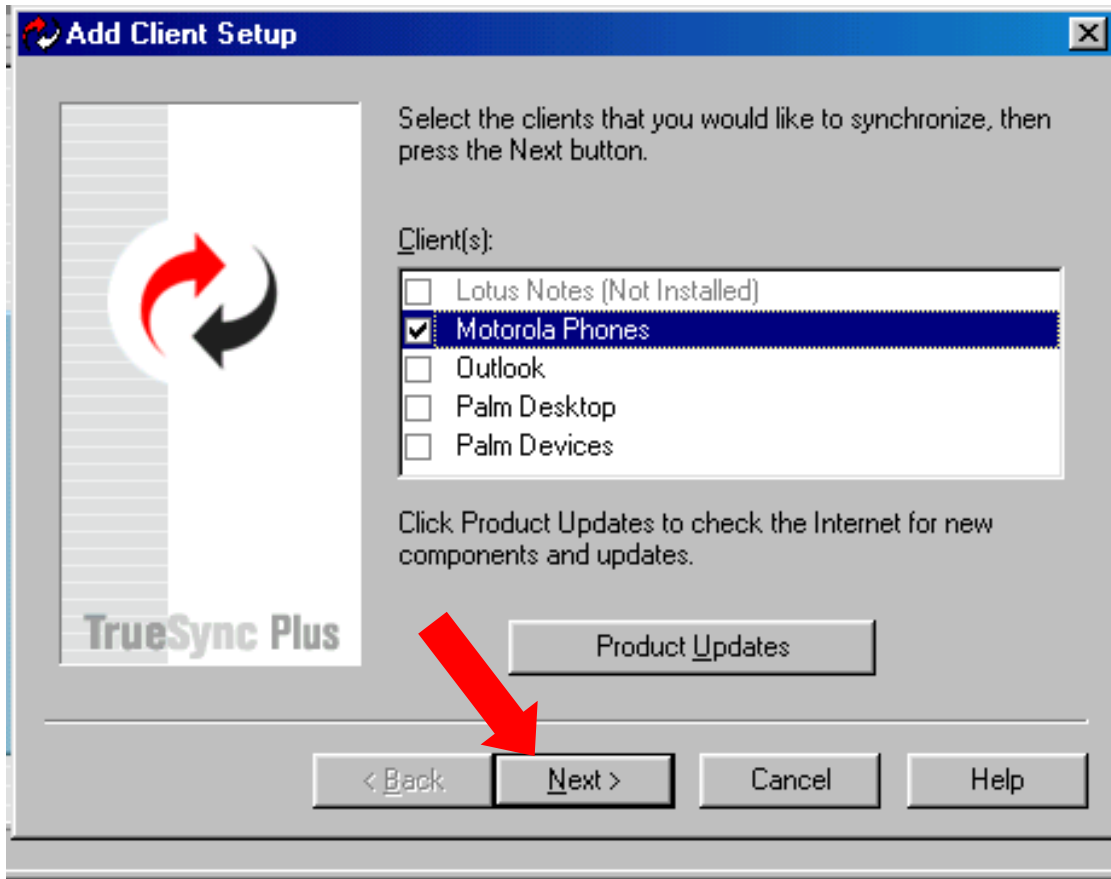
Installing Truesync 3.1 & Phone

Setting up your phone

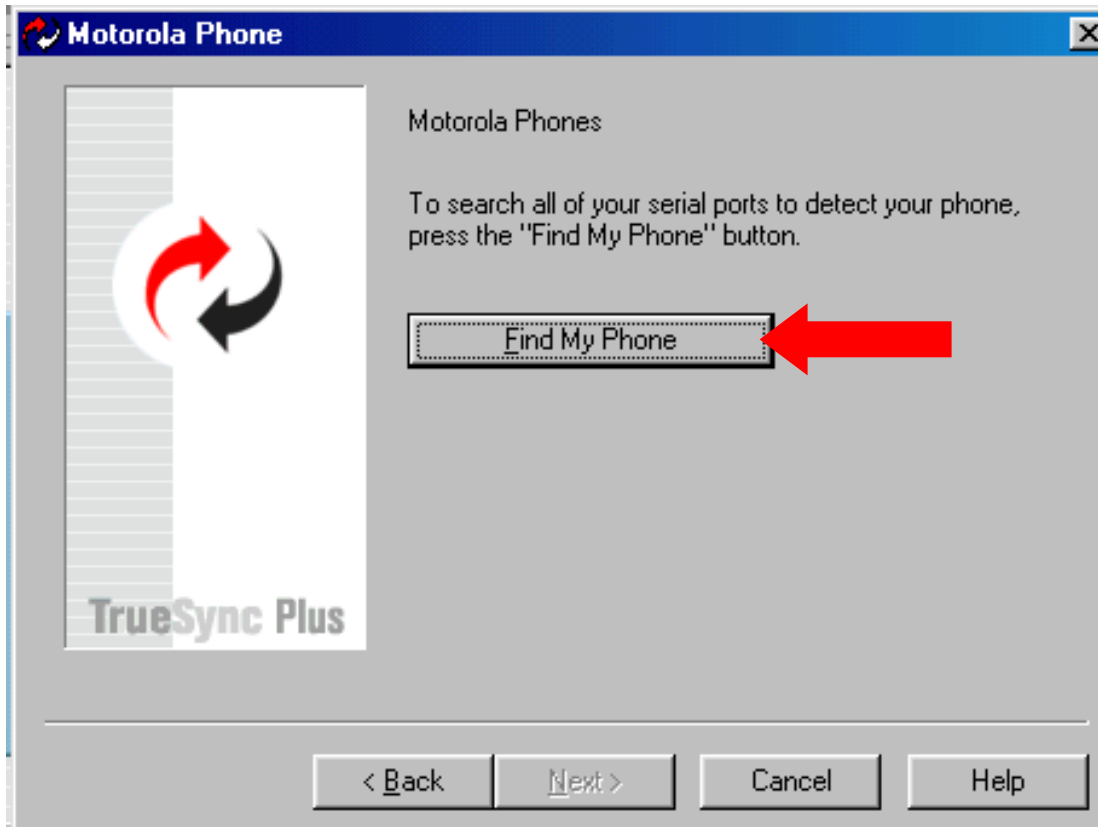
1. Once you have finished installing the Truesync 3.1 program, the ADD CLIENT window will appear as shown below. (Note: your list of clients may differ.)



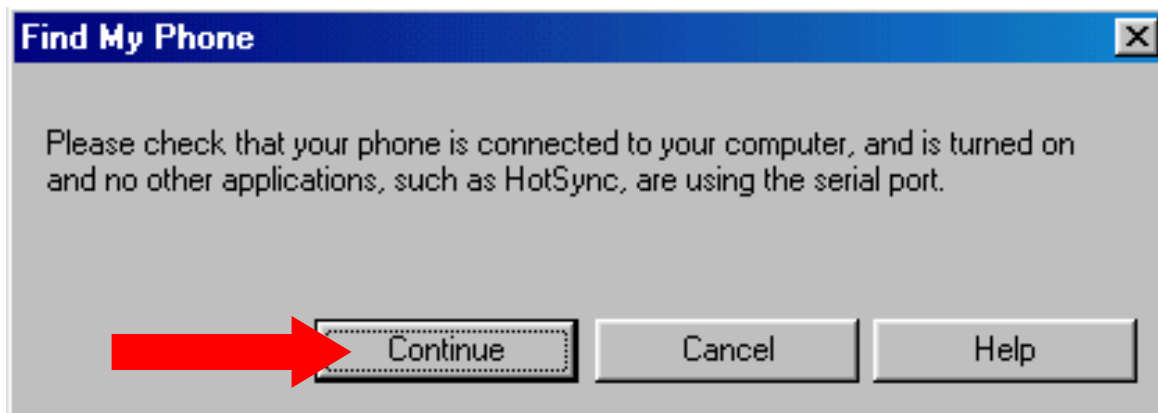
2. Click the box next to **Motorola Phones**. A check mark will appear in the box. Then, click the **Next** button (shown by the red arrow).



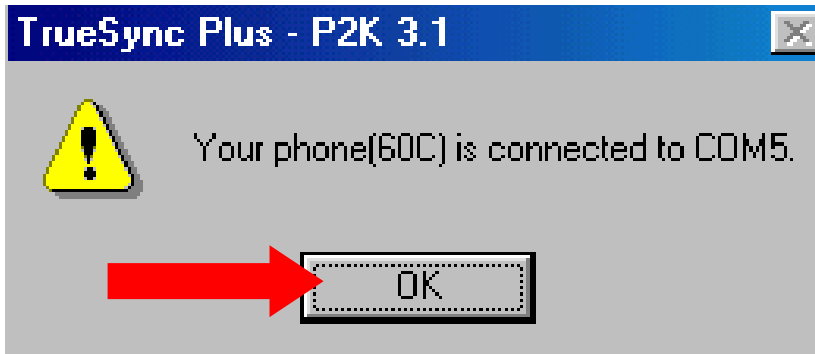
3. Click the “Find My Phone” button (shown by the red arrow). Make sure your phone is plugged in and turned on at this point. If you are using a USB connection, make sure the phone is plugged directly into the computer and NOT through a USB hub or a docking station. If you are using a serial connection, make sure no other programs (such as Hotsync) are running.



4. Click Continue on the next box that appears.



5. After your phone has been found, a box similar to the one below will appear. Press the OK button in this box. If your phone was not found, see the FAQ's to verify your phone was installed properly.



6. After your phone has been installed as a client, you will see the window below. (Note: the client installed will depend on the phone you are using.)

