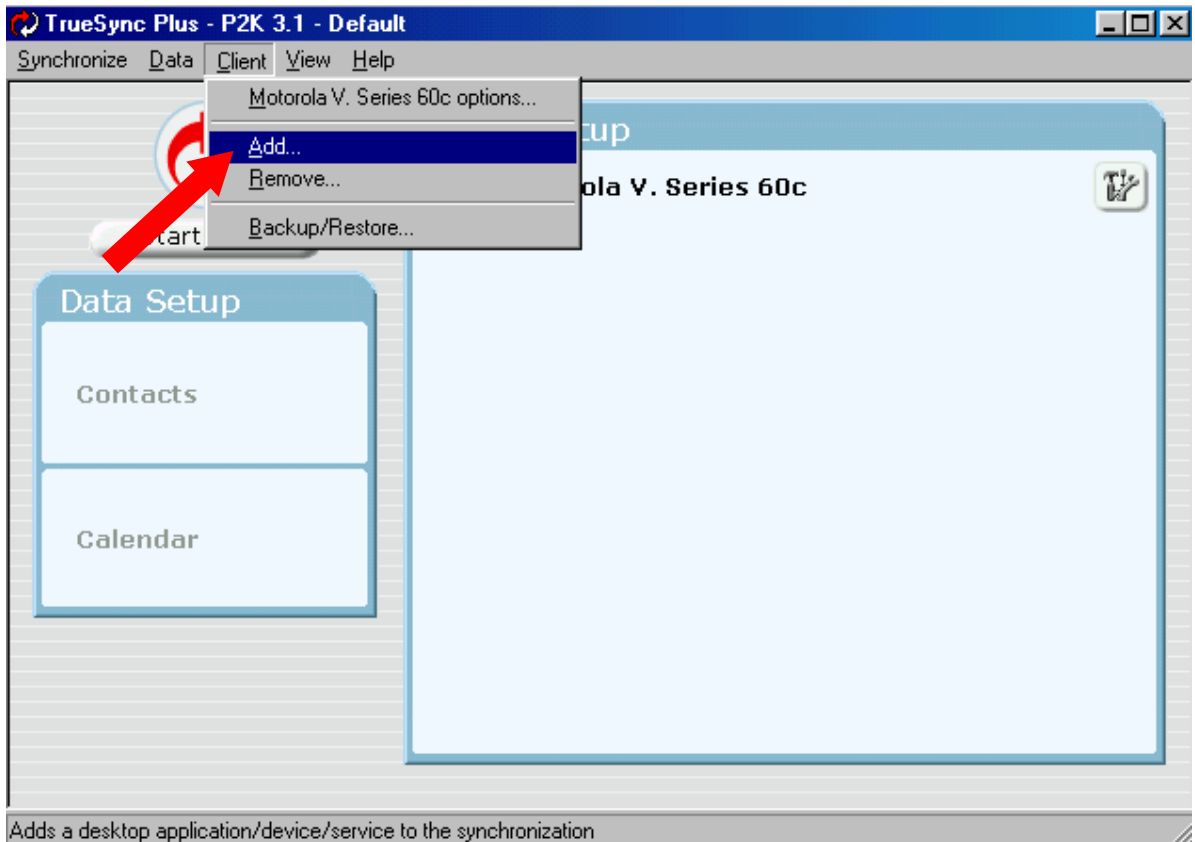


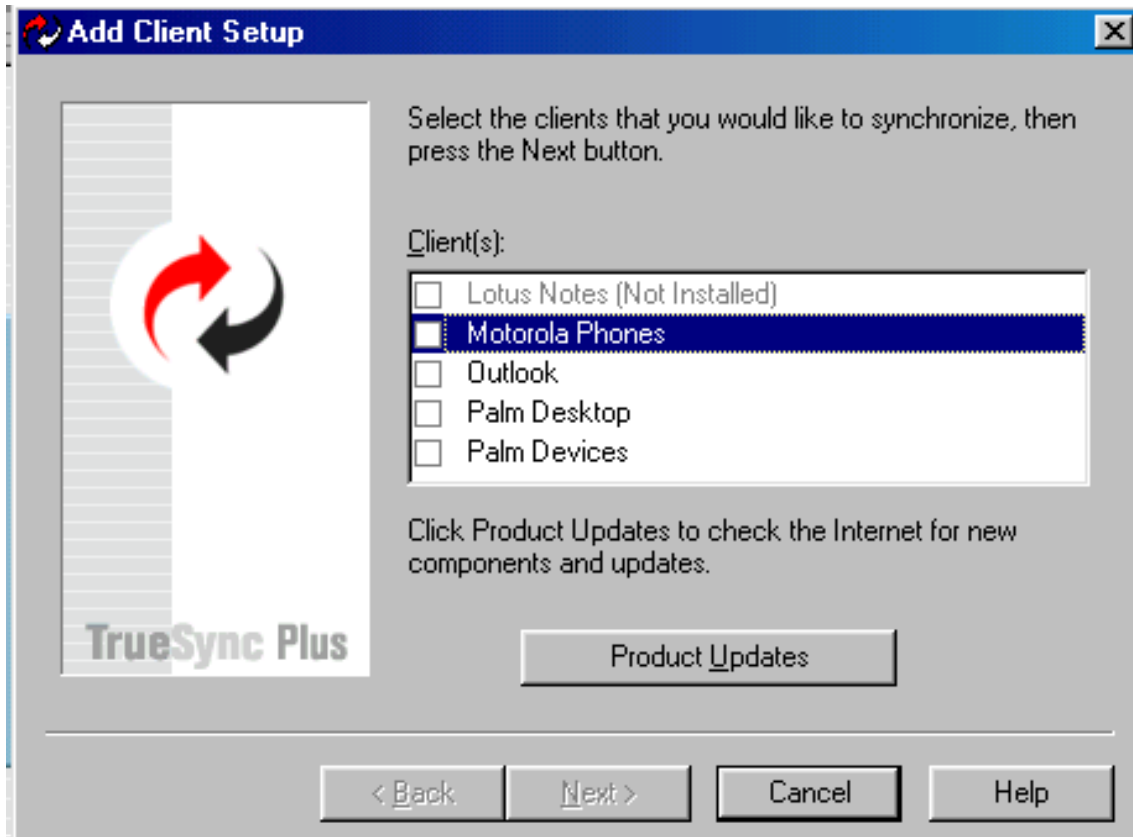
Setting Up Truesync 3.1 for Outlook

Adding Outlook to Truesync

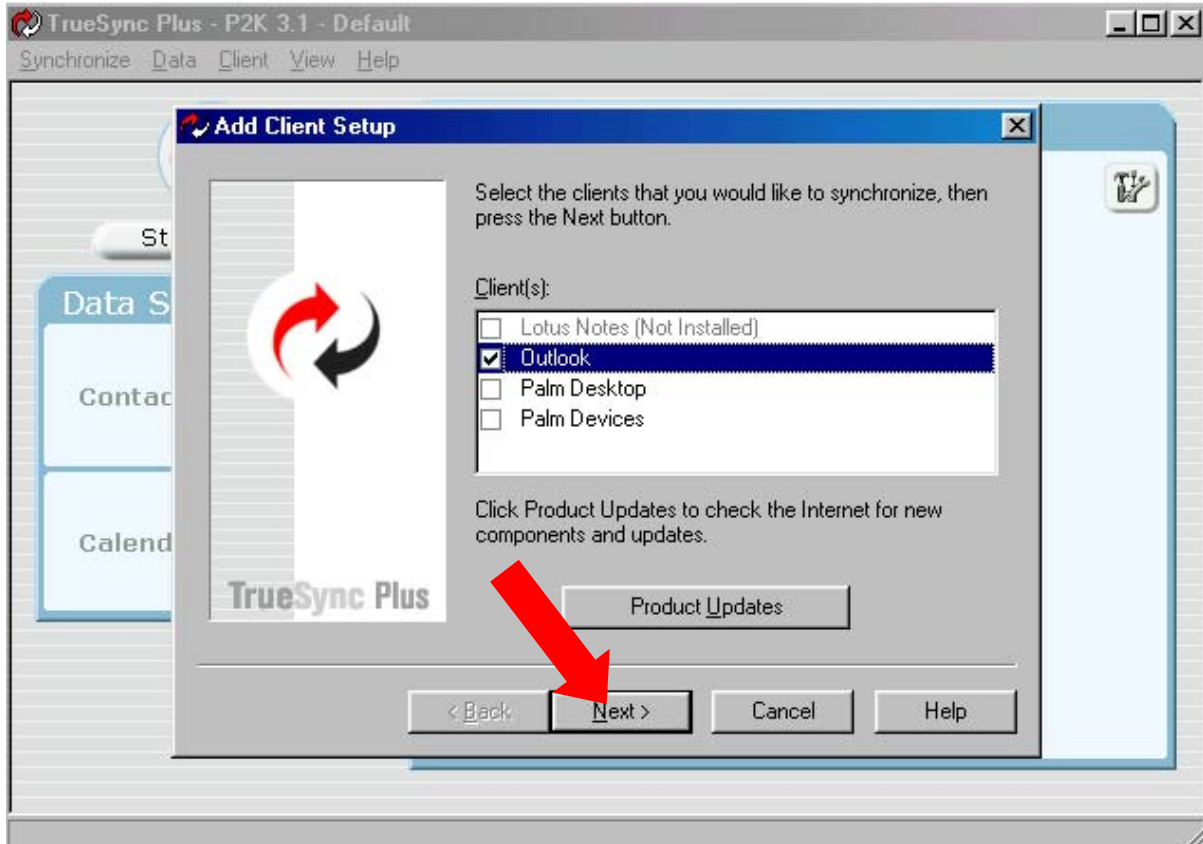
1. Once you have finished installing the Truesync 3.1 program, the ADD CLIENT window will appear as shown in Step 2. If Truesync is already installed and you need to add Outlook, start Truesync Plus. Once it is open, click CLIENT, then ADD, then APPLICATION.



2. The ADD CLIENT window will appear as shown below. (Note: your list of clients may differ.)



3. Click the box next to Outlook. A check mark will appear in the box. Then, click the Next button (shown by the red arrow).



4. Outlook has now been added to Truesync. Consult the FAQ's to find out how to configure the Outlook options in Truesync.

