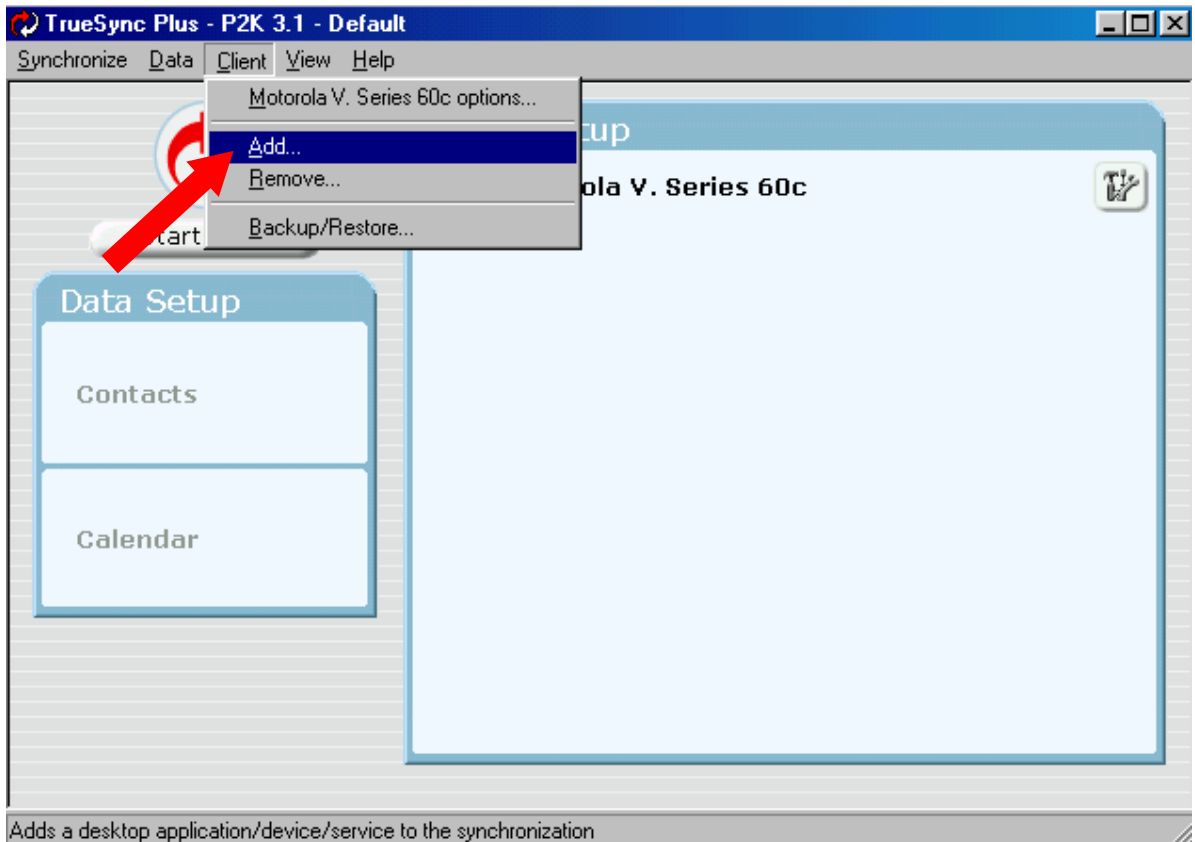


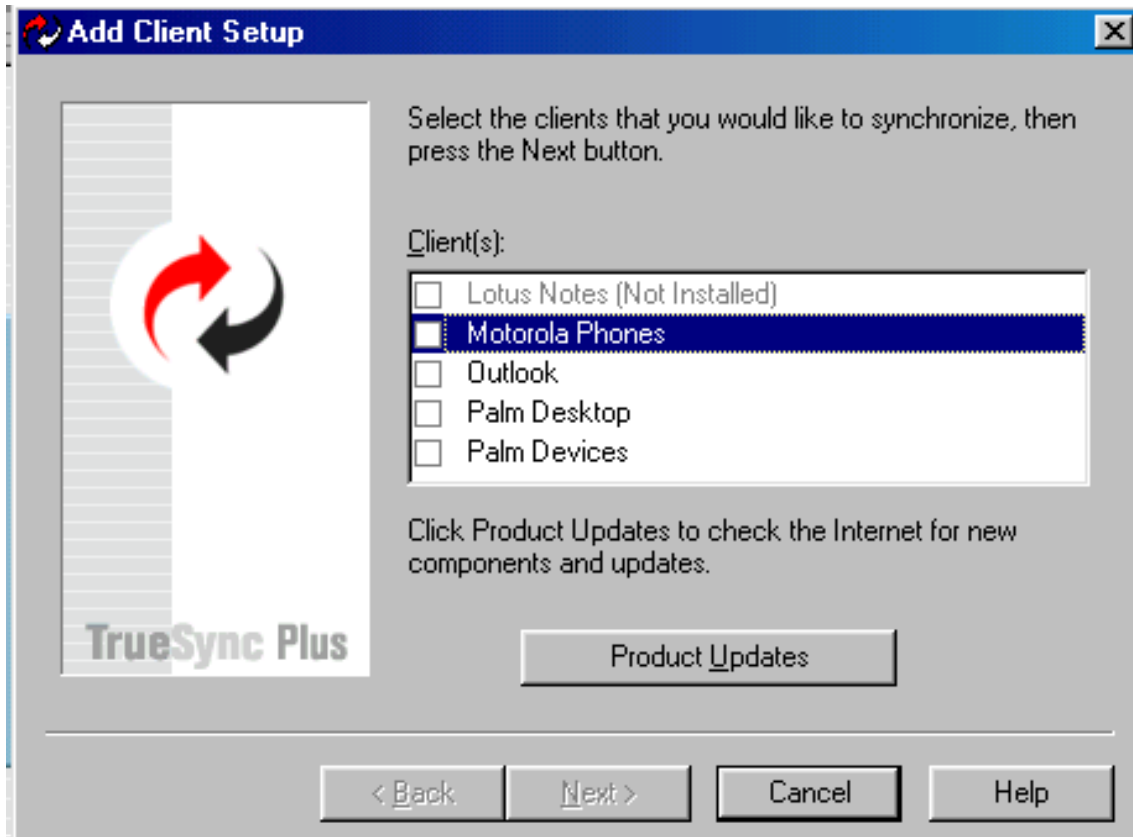
Setting Up Truesync 3.1 for Palm Desktop

Adding Palm Desktop to Truesync

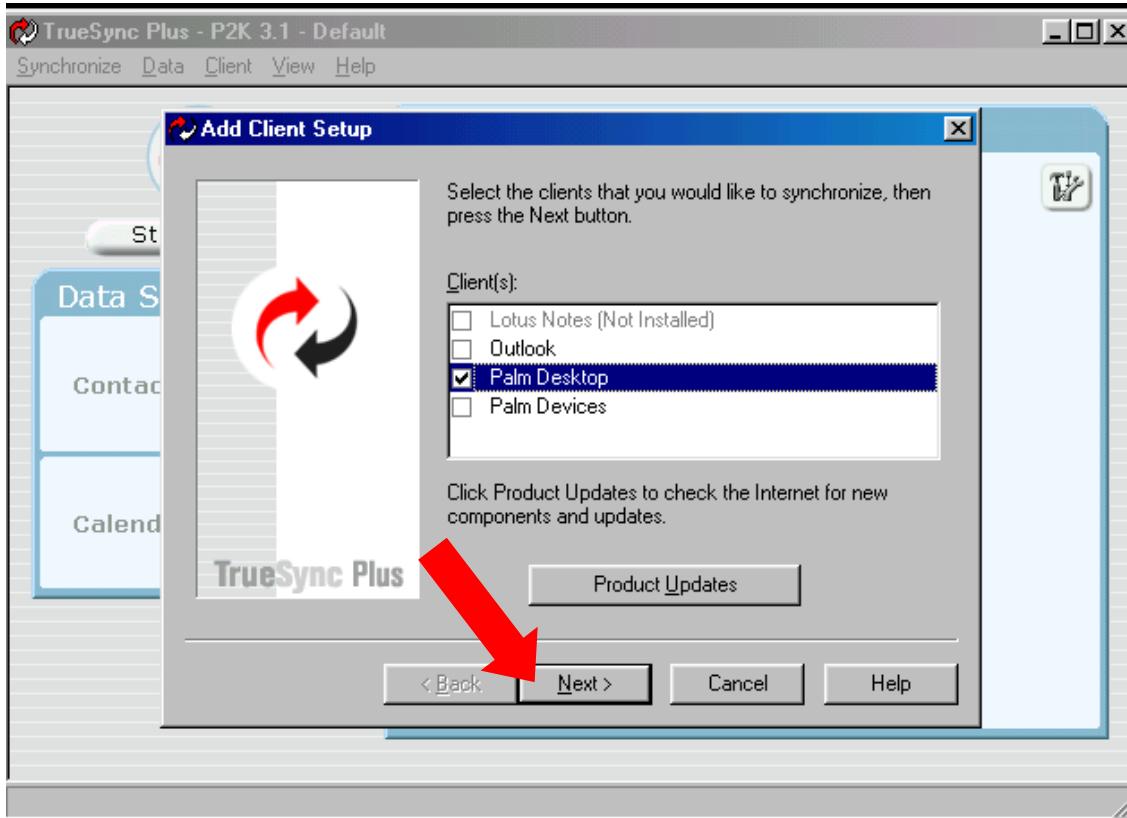
1. Once you have finished installing the Truesync 3.1 program, the ADD CLIENT window will appear as shown in Step 2. If Truesync is already installed and you need to add Outlook, start Truesync Plus. Once it is open, click CLIENT, then ADD, then APPLICATION.



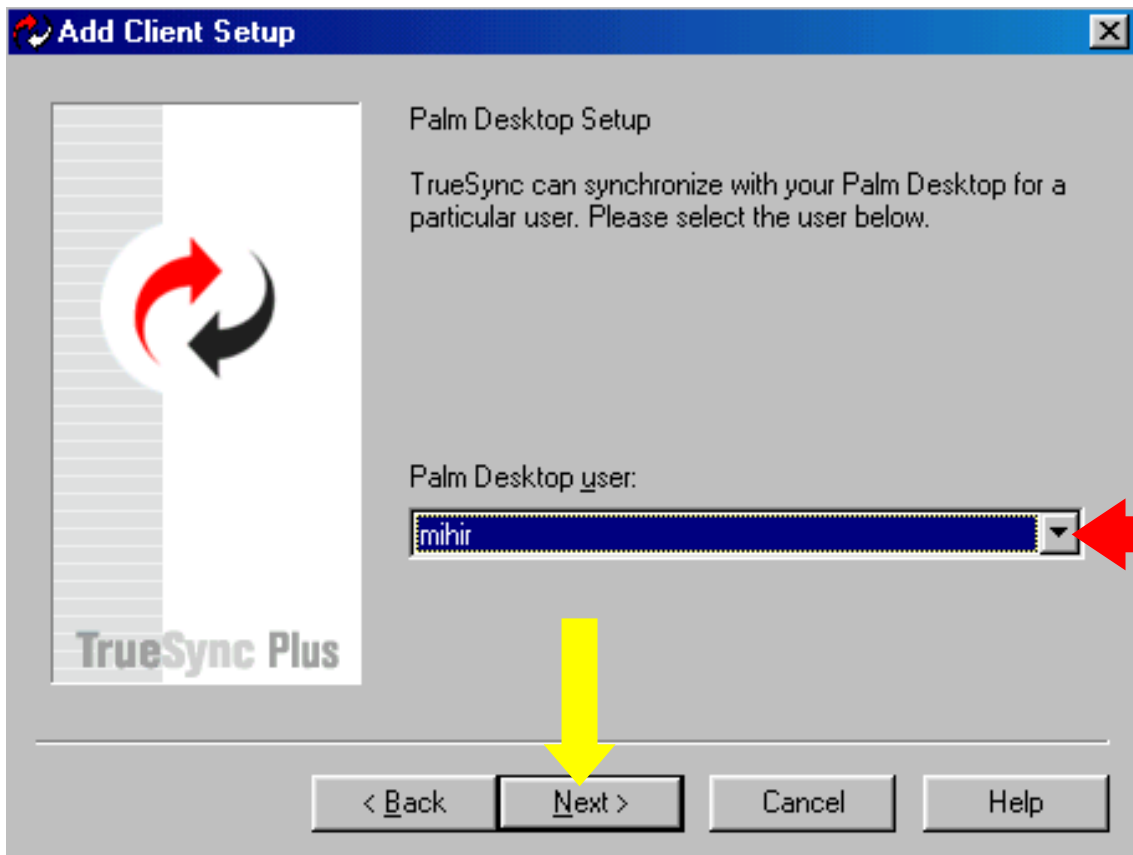
2. The ADD CLIENT window will appear as shown below. (Note: your list of clients may differ.)



3. Click the box next to Palm Desktop. A check mark will appear in the box. Then, click the Next button (shown by the red arrow).



4. You will be prompted to choose the Palm Desktop user. Verify the correct user is shown. If it is not, click the drop down arrow (shown by the red arrow) and choose the correct user. Then click the Next button (shown by the yellow arrow).



5. Outlook has now been added to Truesync. Consult the FAQ's to find out how to configure the Outlook options in Truesync.

