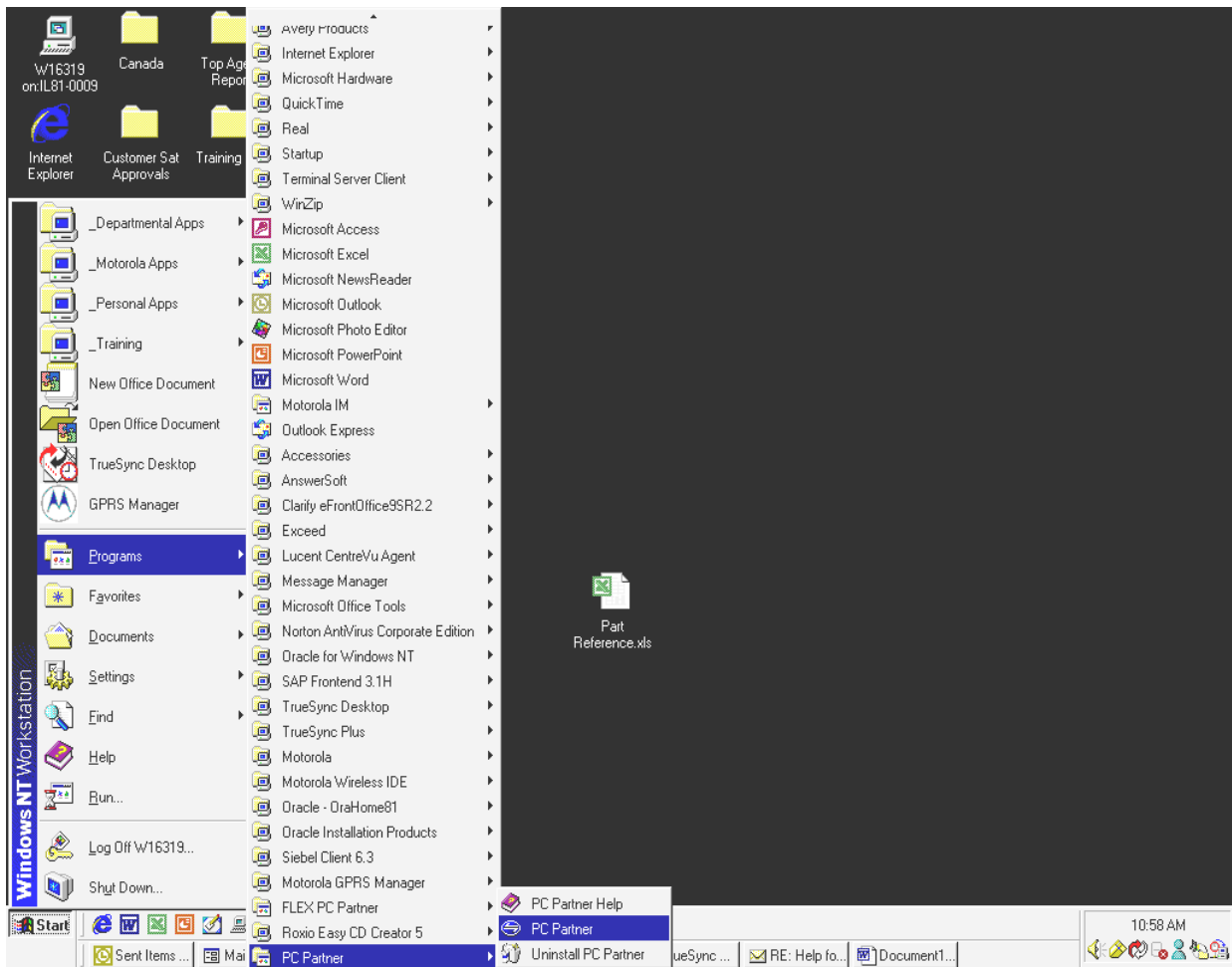


How to back up a two-way pager on PC partner 4.0 for Wisdom OS

Step One:

Open Up PC Partner:

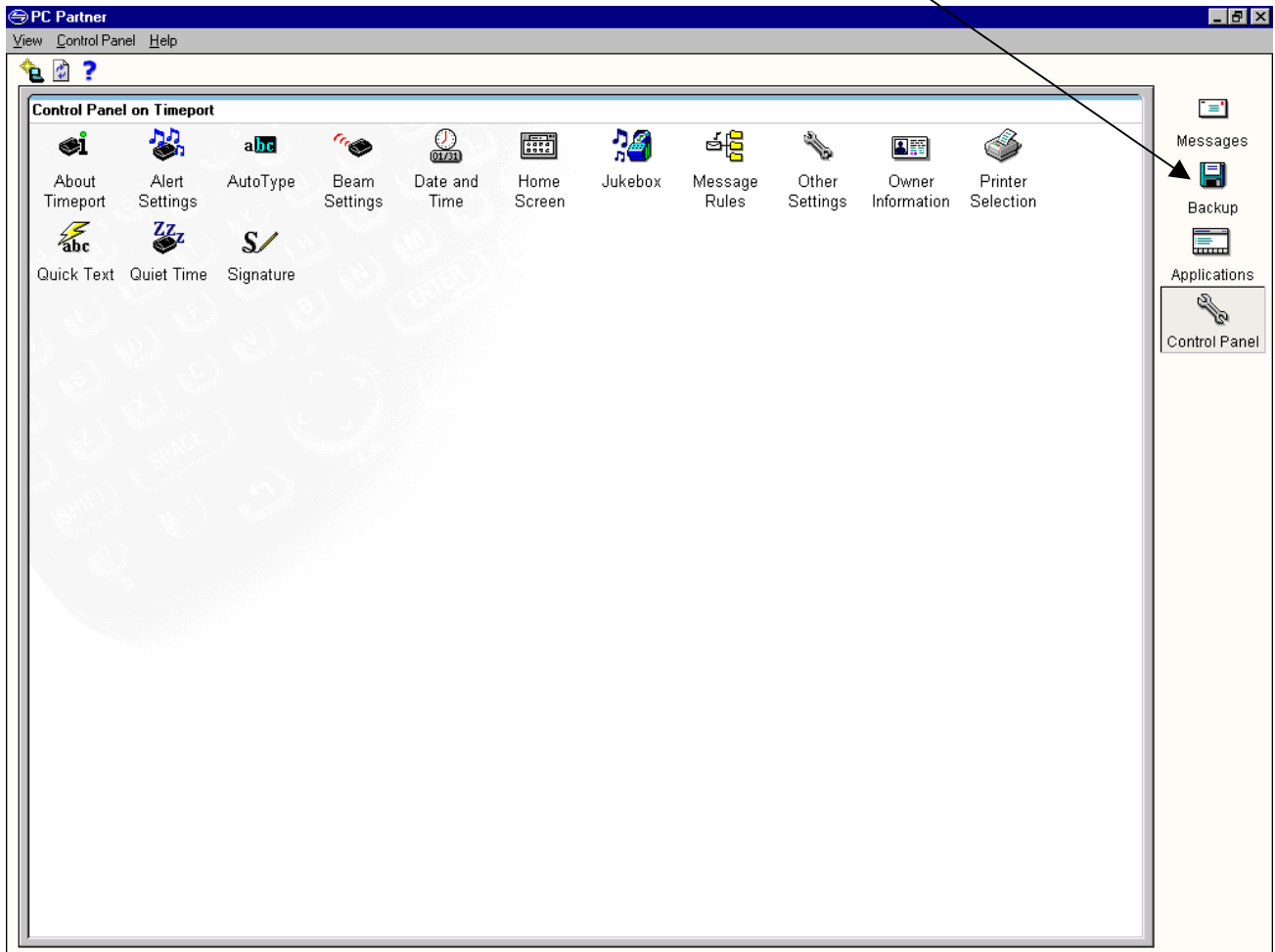


In the computers operating system the customer will go to Start < Program < PC Partner < PC Partner.

PC Partner Application:

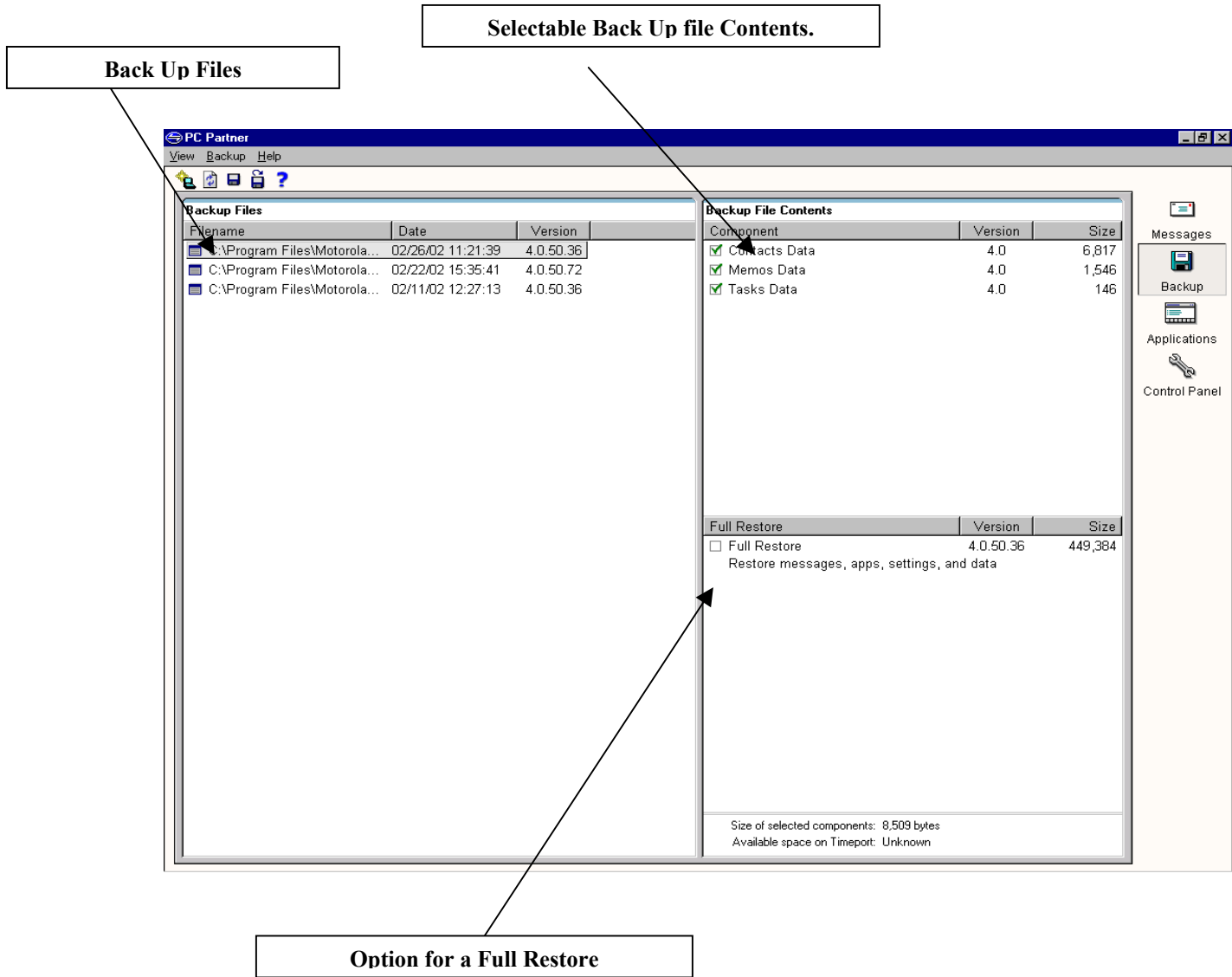
Have the customer Select the Back Up utility in the PC partner Application

Back Up Utility



Once the PC Partner Application is opened the Right hand side of the application will list the icon for the back up utility. Have the customer select the icon by left clicking once with the mouse.

What the Back Up Utility Screen Looks like.



Back Up Files:

These are previous back ups the user has done. If the customer needs to restore an existing back up file they have a choice of either doing a full restore of the back up, or just a restore of a specific component. See definitions below.

Back Up File Contents:

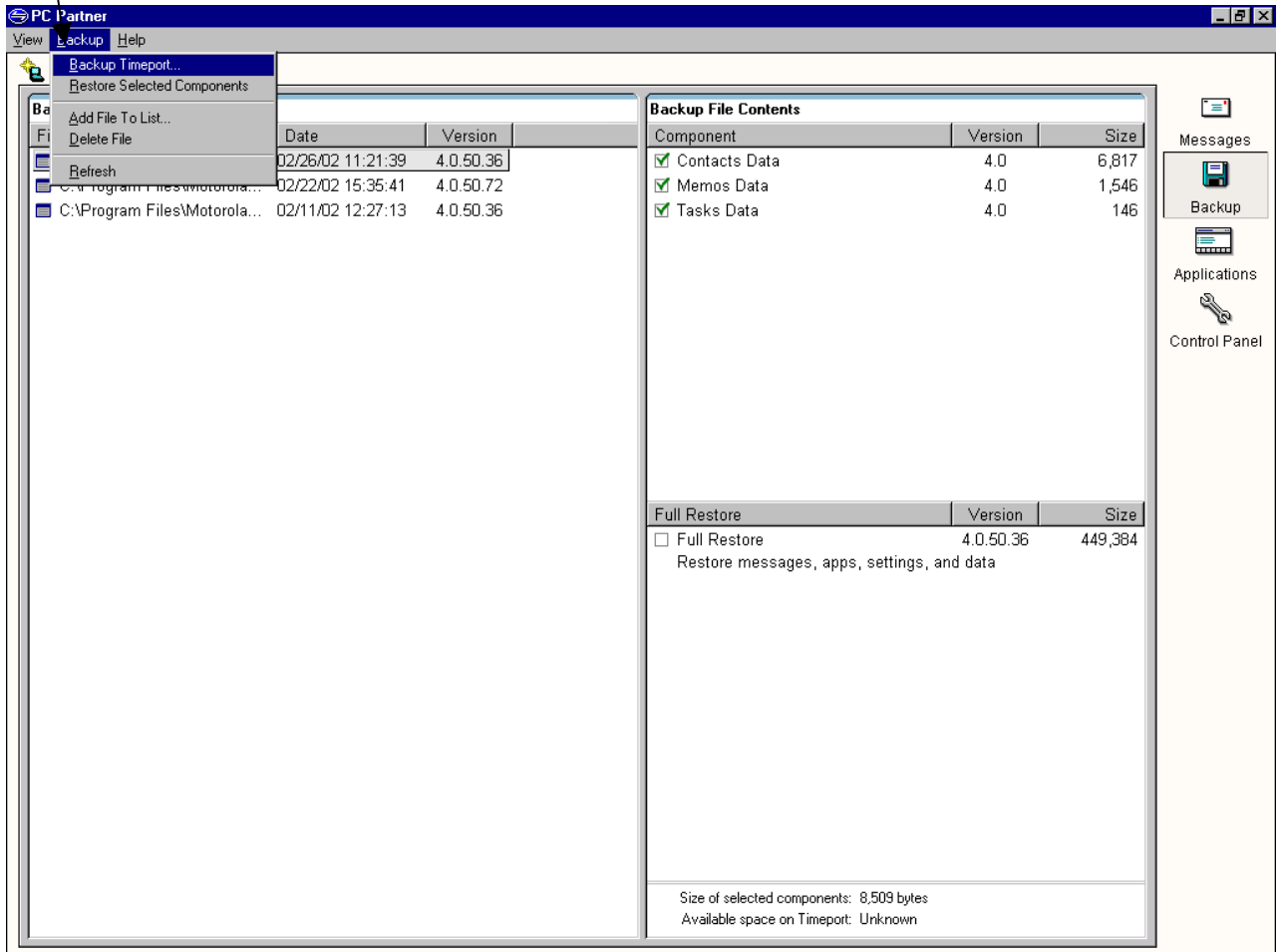
These are the specific components that are backed up. Contacts data contains the back up of the users contact list. Memos Data contains the back up of the memos on the pager, and so on. The user has the choice of restoring any one of these components or all three.

Full Restore:

This option allows the user to completely restore all components, applications and messages from a back up file.

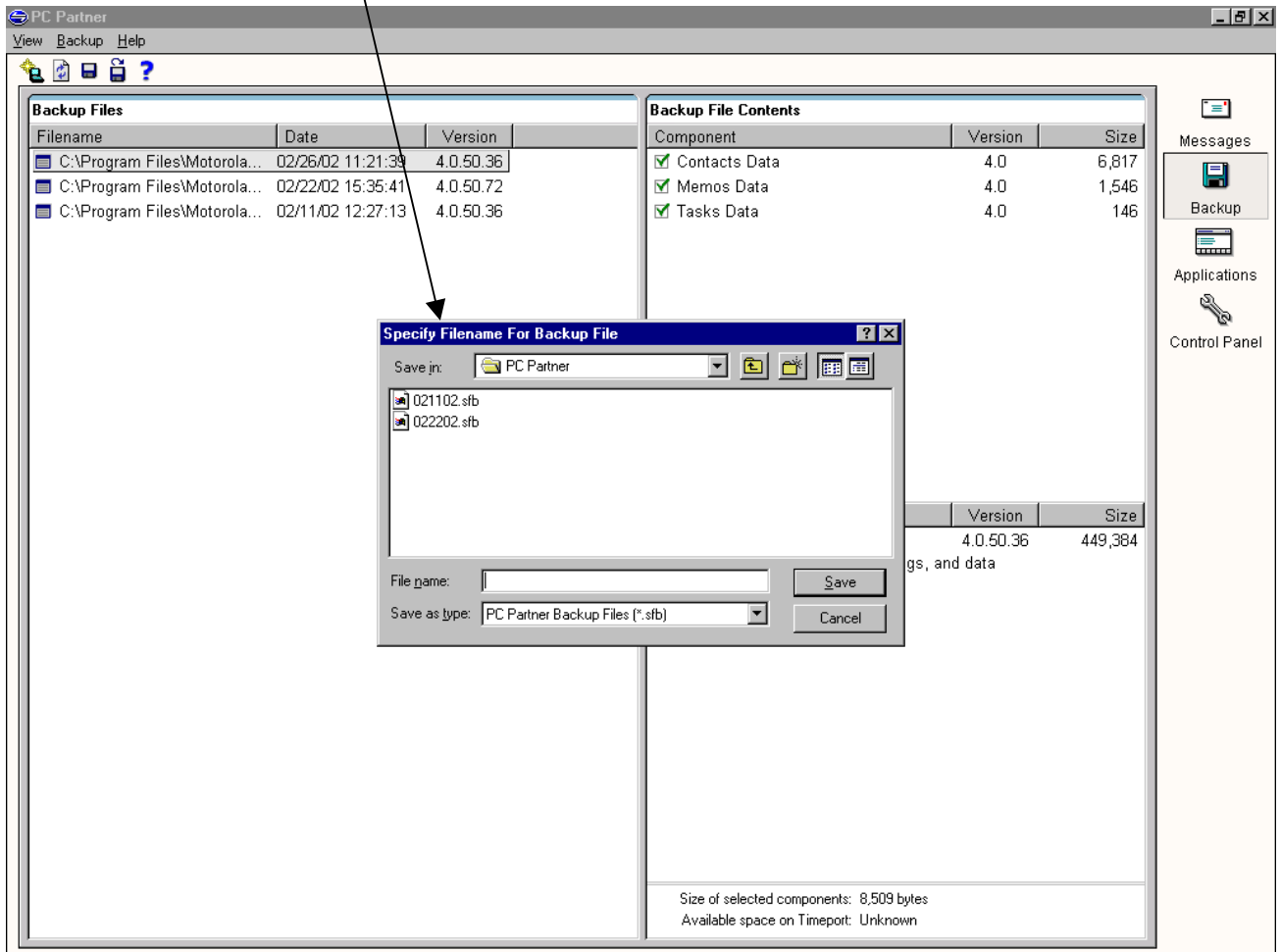
Select Back Up on the Toolbar

Step Three:
Backing Up the Device:

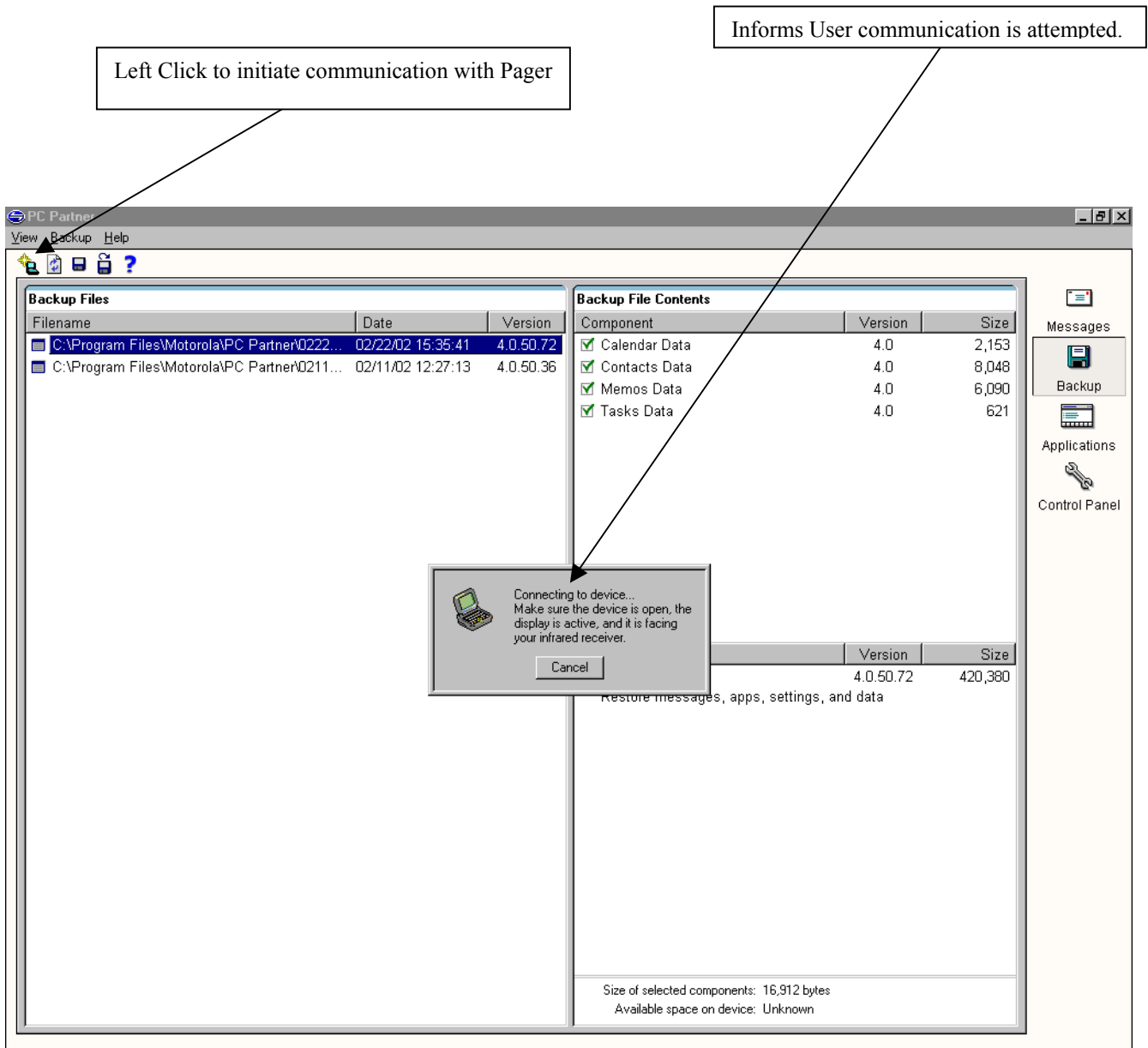


When backing up a device you will have the user select the toolbar option < Back UP >. The customer will either see Back Up Device, or back up Timeport.

Select File Name and location of the Back

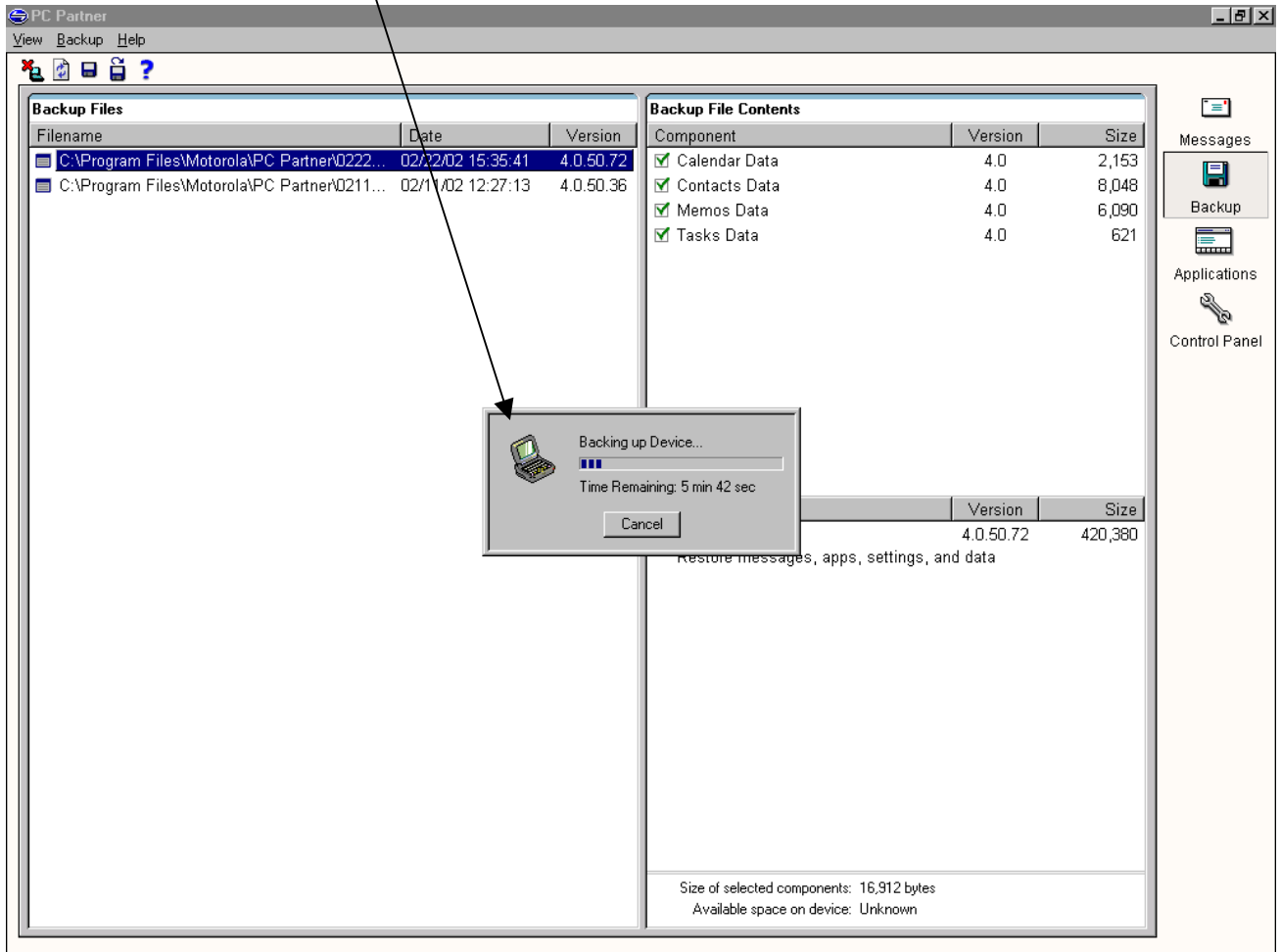


Once the user has selected the back up option they will be prompted to assign a name to the back up file. The user also has the option to choose wherever they would like to save the file. The customer can save the file to a floppy disk or a CD(CD Burner needed).



Once the back up option is select the user will have a pop up window appear informing the user a communication with the device is being attempted.

Shows status of Back Up.



Once the Communication with the Device is established the user will see a status bar with a time frame left for the back up.

The pager is now successfully backed up.