

**SURFboard® SB5101 Cable Modem**

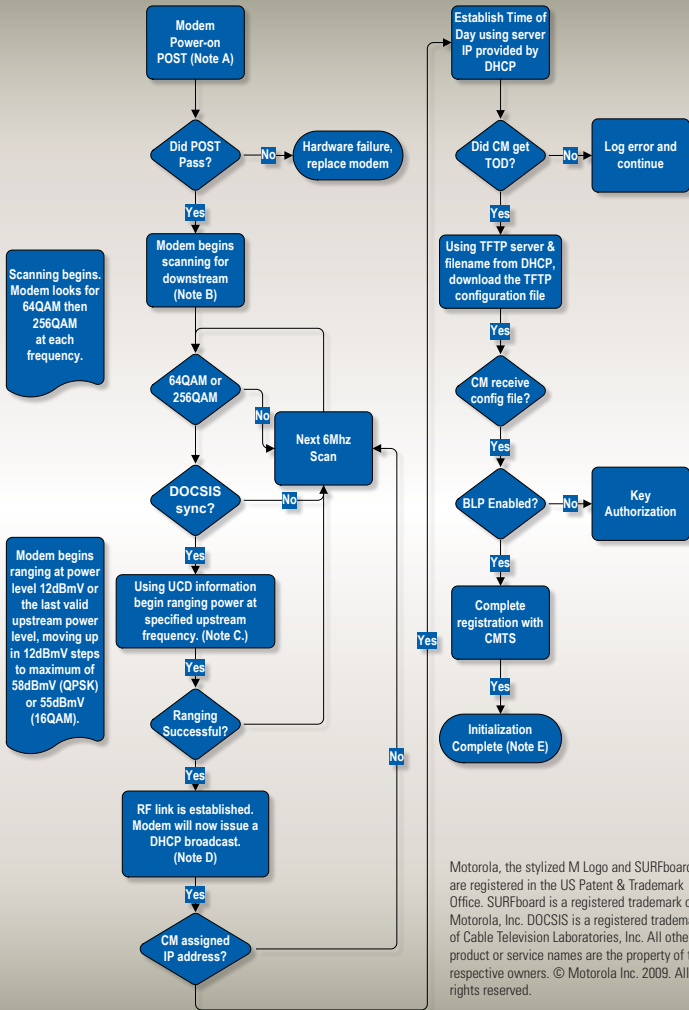
- A** Modem Power-on Self Test (POST). If LED remains blinking, faulty modem.
- B** Modem scanning downstream frequencies.
- C** Modem scanning upstream frequencies.
- D** Downstream and Upstream acquired. Modem processing for DHCP, TFTP, and TOD.
- E** Modem operational. PC/Activity is solid when a CPE is connected and blinks when transmitting or receiving data.
- F** "Standby" switch enabled. Modem successfully completed boot sequence and all LED's blink off, except "Standby".
- G** Modem powered off.
- H** Modem is successfully registered but Network Access Control is disabled via DOCSIS® Configuration File.
- I** Modem has successfully registered and is processing a firmware upgrade.

**SURFboard® SB5101 Cable Modem LED Status**

Notes	Power	Receive	Send	Online	PC/ Activity	Standby	
A	●	○	○	○	○	○	Power On
B	●	●	○	○	○	○	Downstream Scan
C	●	●	●	○	○	○	Upstream Range
D	●	●	●	●	○	○	Network Connect
E	●	●	●	●	●/●	○	PC/Network Activity
F	○	○	○	○	○	●	Standby*
G	○	○	○	○	○	○	Power Off
H	●	●	●	○	●	○	Network Access Off
I	●	●	●	●	●	○	Firmware Upgrade in Progress

● - On ○ - Off ● - Flashing

* Standby not available on all models



Motorola, the stylized M Logo and SURFboard are registered in the US Patent & Trademark Office. SURFboard is a registered trademark of Motorola, Inc. DOCSIS is a registered trademark of Cable Television Laboratories, Inc. All other product or service names are the property of their respective owners. © Motorola Inc. 2009. All rights reserved.