



MOTOROLA

# MOTOSTART

## Motorola Phone Tools Bluetooth Connections

### Installation & Setup



6809480A56-C

The following steps describe how to install Motorola Phone Tools and connect your phone to your computer with a Motorola USB Adapter.

**Note:** The software installation is shown on a computer running the Microsoft Windows<sup>®</sup> XP operating system. Minor differences exist when installing this software on other Windows operating systems.

For additional assistance, visit <http://www.motorola.com/support/data> and select **Motorola Phone Tools**.

## Motorola Phone Tools Quick Tour



- Synchronize phonebooks and calendars
- Manage phonebook contacts
- Manage calendar tasks and appointments
- Send/Receive Email and SMS
- Manage multimedia objects
- Establish Internet connectivity
- View mobile phone information

**Note:** Image shown is not based on your particular phone. Actual image and features may vary from screen shown here.

**DO NOT Connect  
the USB Adapter  
to Your Computer  
Until Prompted**



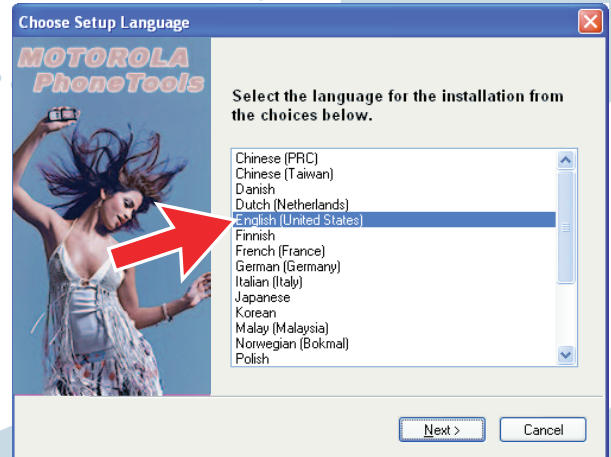
1

Insert the Motorola Phone Tools CD into your PC's CD-ROM.



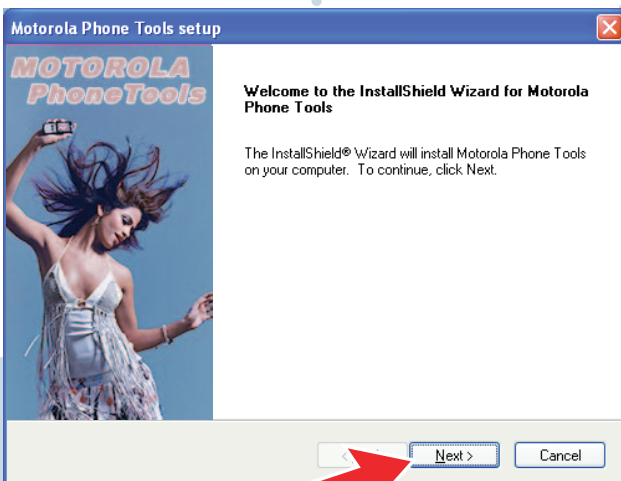
2

Choose your language.



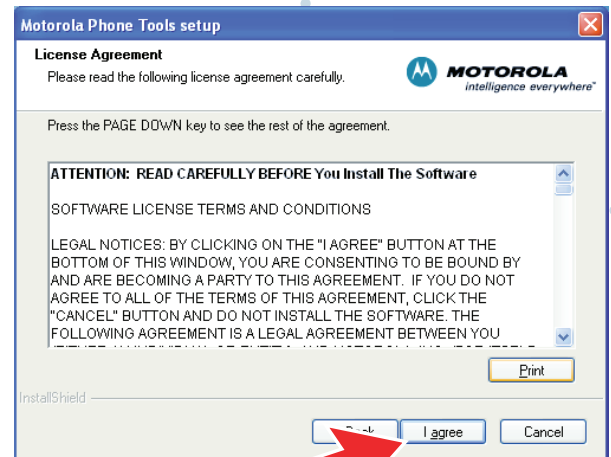
3

Welcome to InstallShield Wizard.

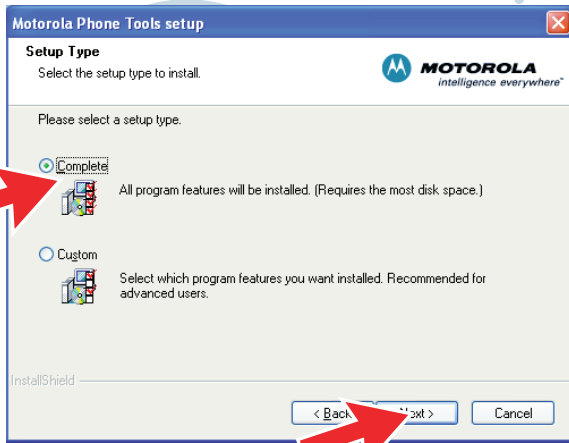


4

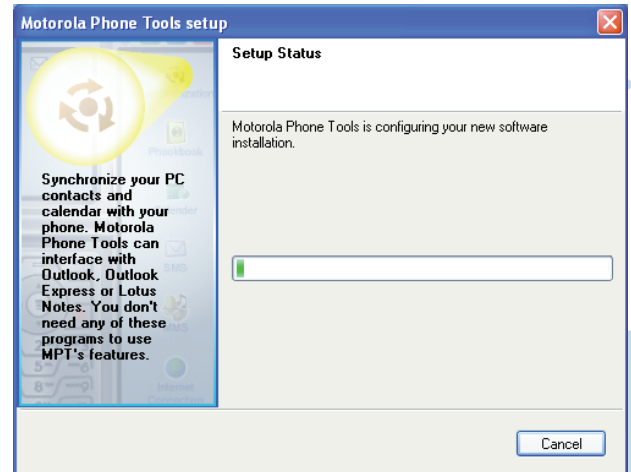
Accept license terms and conditions.



## 5 Choose installation type



## 6 Installation begins.



## 7 To enter your registration information click OK.

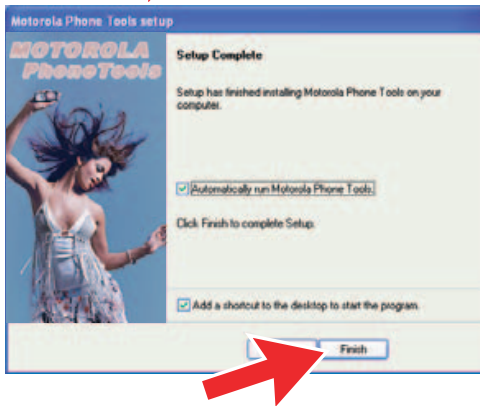


## 8 Enter your information and click Submit.



9

Click Next on the reminder to NOT connect the USB device. Click Finish to complete Setup.



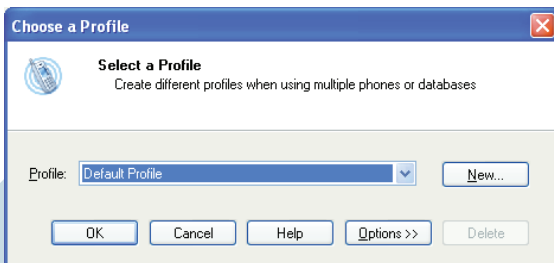
10

When Motorola Phone Tools launches, LiveUpdate will begin. Click Next to check for available software updates.



11

Create a unique user profile for your mobile phone. When complete, click OK.



MOTOROLA and the Stylized M Logo are registered in the US Patent & Trademark Office.

The Bluetooth trademarks are owned by their proprietor and used by Motorola, Inc. under license. Microsoft, Windows, ActiveSync, Windows Media, and MSN are registered trademarks of Microsoft Corporation; and Windows XP, Windows Mobile and Microsoft.net are trademarks of Microsoft Corporation. All other product or service names are the property of their respective owners.

[www.hellomoto.com](http://www.hellomoto.com)

© 2006 Motorola Inc.

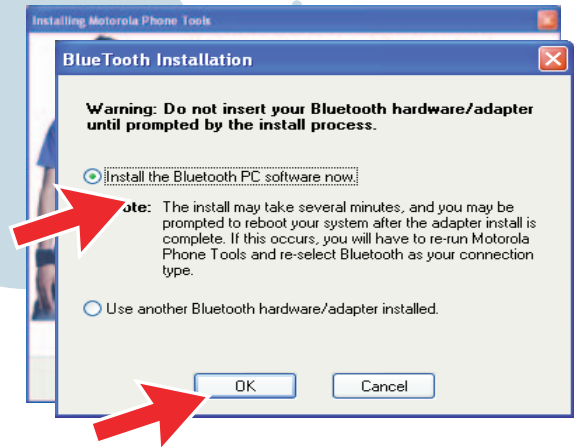
12

Do not attach the adapter. Select the connection type and click Next.



13

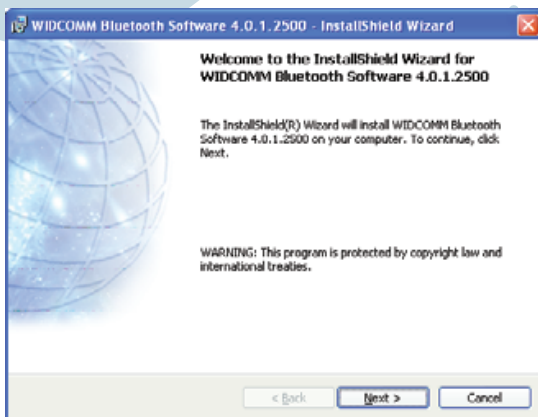
If your kit has the Bluetooth Adapter, select Bluetooth USB PC Adapter and click OK.



DO NOT CONNECT the adapter yet.

14

Installing Bluetooth software.



*Continue with steps  
on other side >*

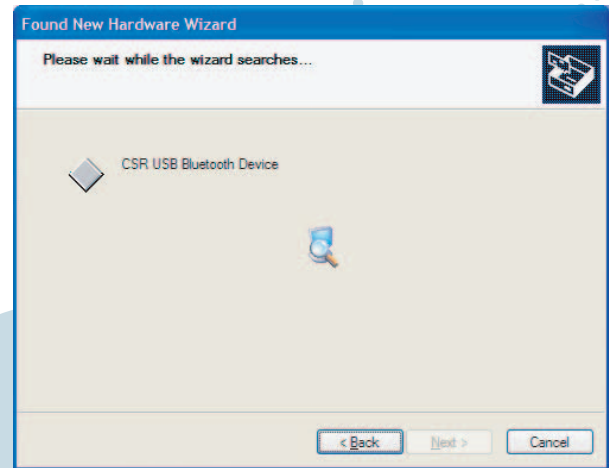
**15** Wait until the following screen is displayed.



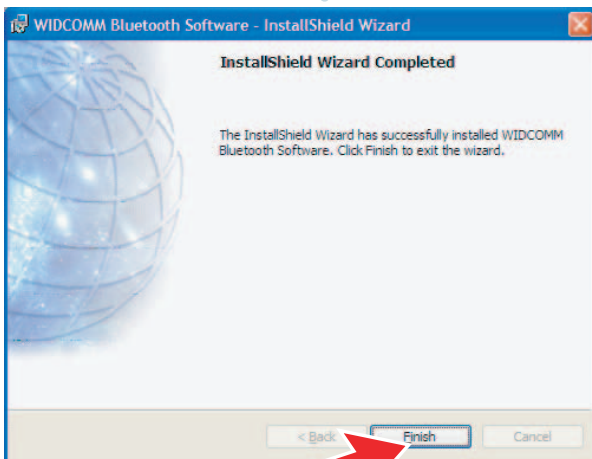
Connect the Bluetooth Adapter to your PC and if needed, click OK.



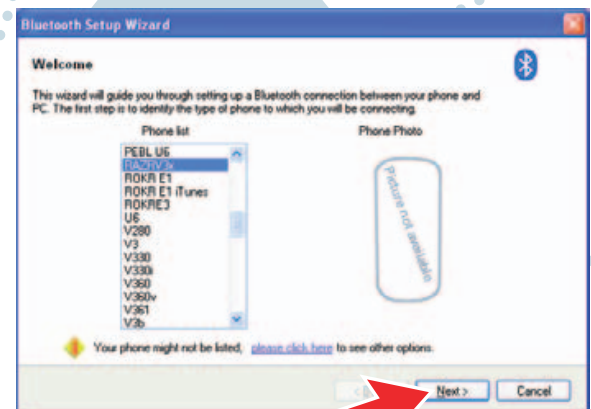
**16** Multiple Found New Hardware Windows may appear during the Bluetooth Installation Wizard Installation.



**17** When the InstallShield Wizard completes, Click Finish to complete setup.



**18** Select your phone in the Phone List and click Next.

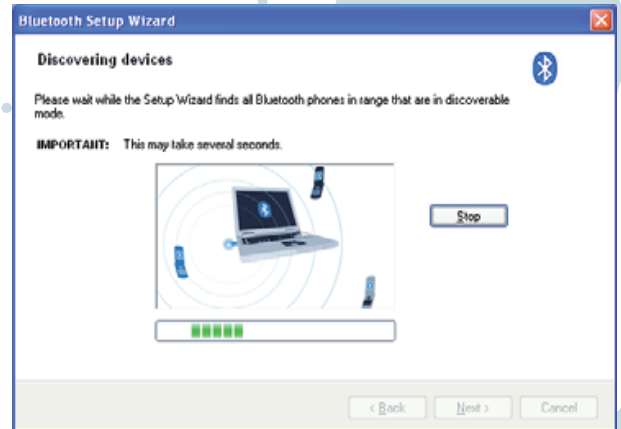


**Note:** A picture of your phone may or may not appear in the Selected Phone Picture box.

**19** Pick up your phone and follow the Setup Wizard instructions to place it in "Discoverable Mode."

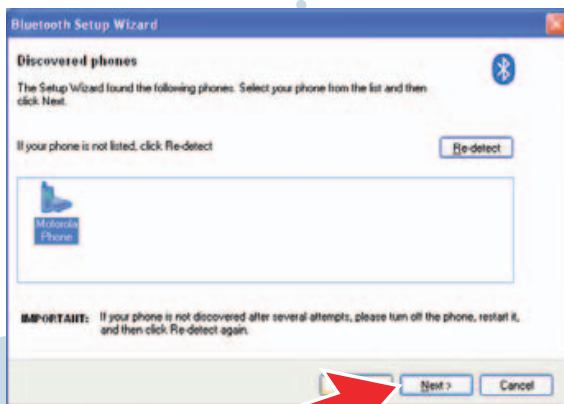


**20** Wait while Motorola Phone Tools discovers phones.

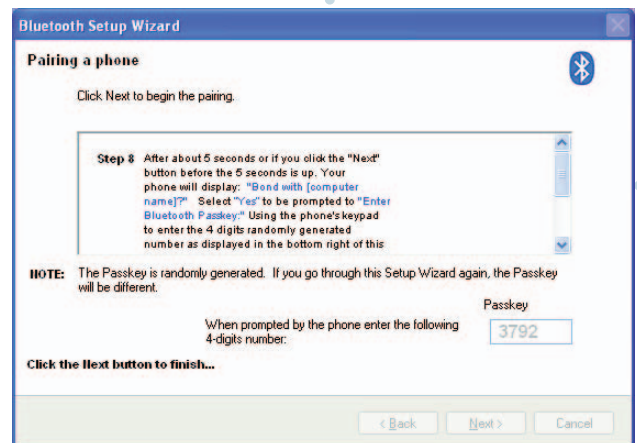


**Note:** If no devices are discovered, see the Troubleshooting section at the end of this guide.

**21** Select your phone from the list.



**22** Pick up your phone and follow the Setup Wizard instructions to begin pairing your phone.



**23** After approximately 5 seconds, the phone displays a bond request from your PC.

On your phone, press Yes, enter the 4-digit passcode displayed on your PC setup wizard screen, and press OK.

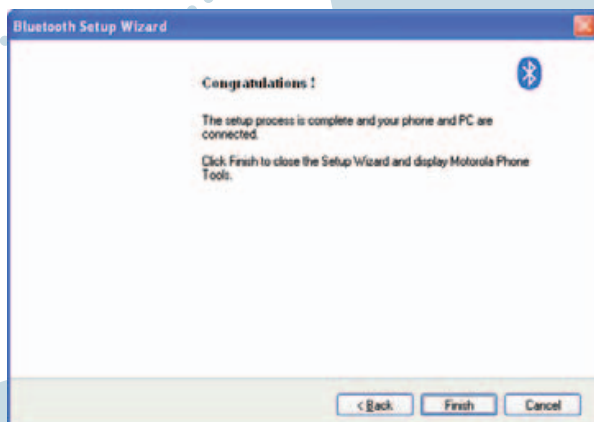


**24** Wait while Motorola Phone Tools installs the device.



**Note:** If the device is not installed, see the Troubleshooting section at the end of this guide.

**25** Pairing process is complete. Click Finish to close the Setup Wizard.



## TROUBLESHOOTING

**During the Device Discovery (step 20), Motorola Phone Tools doesn't find my phone and I can't click Next to continue.**

This issue is usually related to Microsoft Windows Service Pack 2 (SP2). To resolve this issue:

- 1 With your browser, visit <http://www.motorola.com/support/data>.
- 2 Select the **mobile Phone Tools** link.
- 3 Scroll to **Support Help** and locate the appropriate link for more information.

## Motorola Phone Tools is not detecting my phone, but my device is connected.

You may need to update the phone list and manually detect the phone.

- 1** On the error message, click **Yes**. The Motorola Live Update screen is displayed.
- 2** Follow the prompts to install the Live Update. Motorola Phone Tools tries to automatically detect your phone. If it is unable to find it, the Device Configuration Wizard is displayed.
- 3** On the Device Configuration Wizard screen, press **Next** to start the manual detection.

**4** On the device list, if your phone is not listed, choose **Motorola USB modem** and click **Next**.

**5** Select the **Do not automatically detect the driver**. Select from a **list**. checkbox and click **Next**.

**6** On the Model Selection window, select your phone type and model and click **Next**. The manual phone detection completes and Motorola Phone Tools launches.

## FOR MORE ASSISTANCE

If you need additional assistance, visit <http://www.motorola.com/support/data> and select **Motorola Phone Tools** or call the Motorola Help Desk at 800-331-6456.

www.hellomoto.com  
1-877-MOTOBLU  
1-800-331-6456 (United States)  
1-888-390-6456 (TTY/TDD United States for hearing impaired)  
1-800-461-4575 (Canada)

MOTOROLA and the Stylized M Logo are registered in the U.S. Patent and Trademark Office.  
© 2007 Motorola, Inc. All rights reserved.  
Motorola, the Stylized M Logo, and "Communications solutions. everywhere." are trademarks of Motorola, Inc. in the U.S. and other countries.

www.hellomoto.com

the US Patent & Trademark Office. The Bluetooth trademark  
ation; and Windows XP, Windows Mobile and Microsoft.net



s are owned by their proprietor and used by Motorola, Inc. u  
t are trademarks of Microsoft Corporation. All other product

under license. Microsoft, Windows, ActiveSync, Windows Me  
or service names are the property of their respective owners

dia, and MSN are registered trademarks of Microsoft  
s.

© 2006 Motorola Inc.