



MOTOROLA

MOTOSTART

Motorola Phone Tools Data Connections

Installation & Setup



6809476A88-D

The following steps describe how to install Motorola Phone Tools and connect your phone with a Motorola data cable to your computer.

Note: The software installation is shown on a computer running the Microsoft Windows® XP operating system. Minor differences exist when installing this software on other Windows operating systems.

For additional assistance, visit <http://www.motorola.com/support/data> and select **Motorola Phone Tools**.

Motorola Phone Tools Quick Tour



- Synchronize phonebooks and calendars
- Manage phonebook contacts
- Manage calendar tasks and appointments
- Send/Receive Email and SMS
- Manage multimedia objects
- Establish Internet connectivity
- View mobile phone information

Note: Image shown is NOT based on your particular phone. Actual image and features may vary from screen shown here.

**DO NOT Attach any
Cables to Your
Computer
Until Prompted**



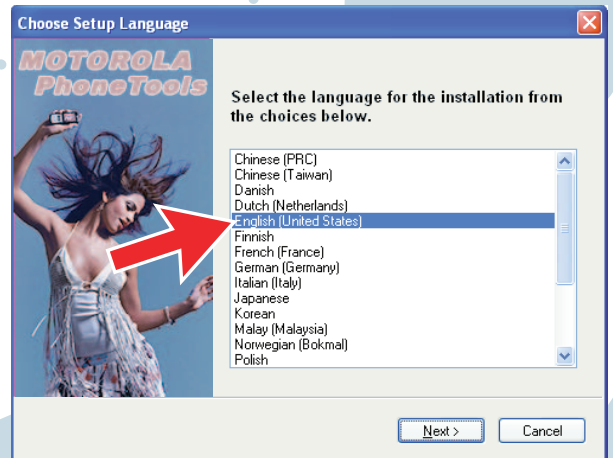
1

Insert the Mobile Phone Tools CD into your PC's CD-ROM.



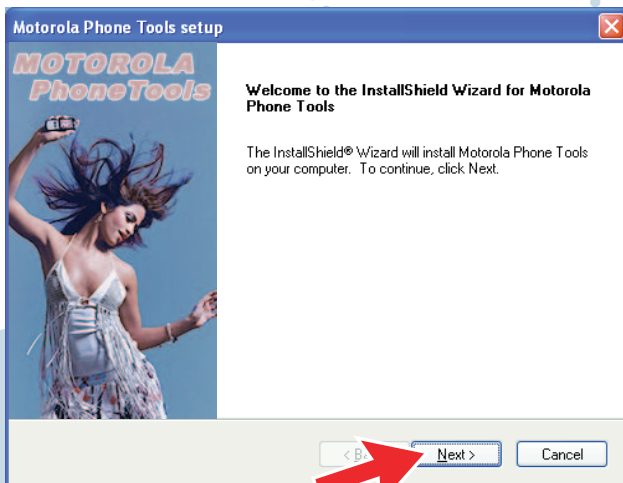
2

Choose your language.



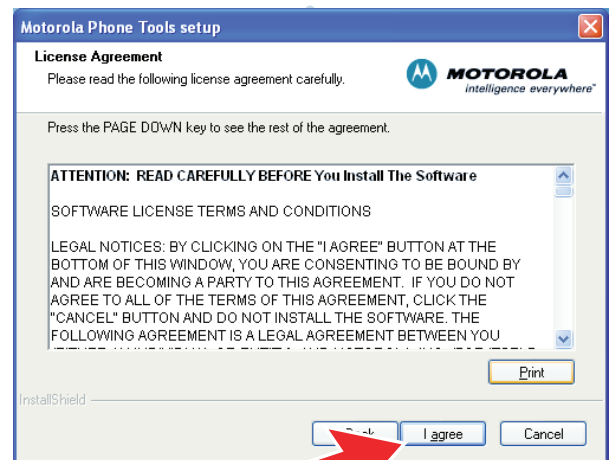
3

Welcome to InstallShield Wizard.



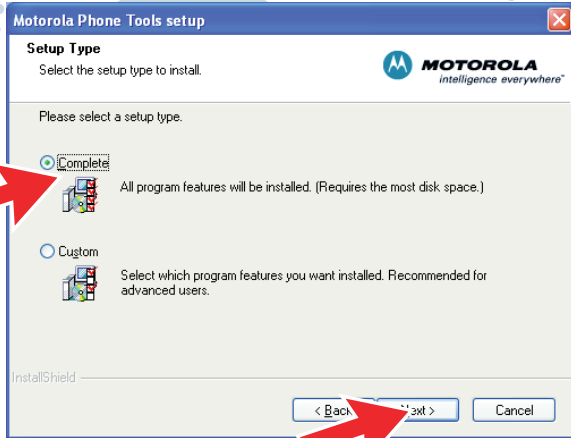
4

Accept license terms and conditions.



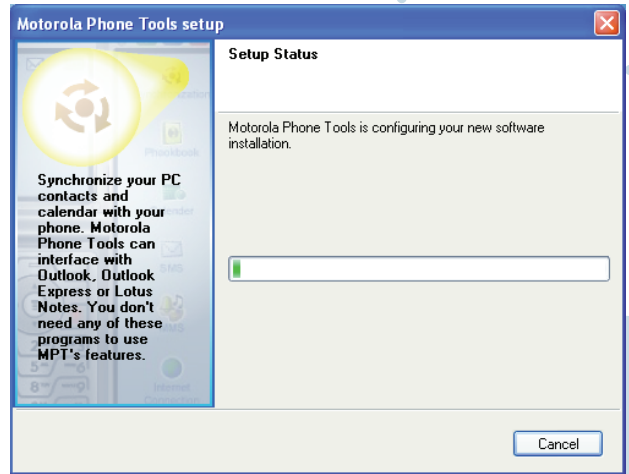
5

Choose installation type



6

Installation begins.



7

To enter your registration information click OK.



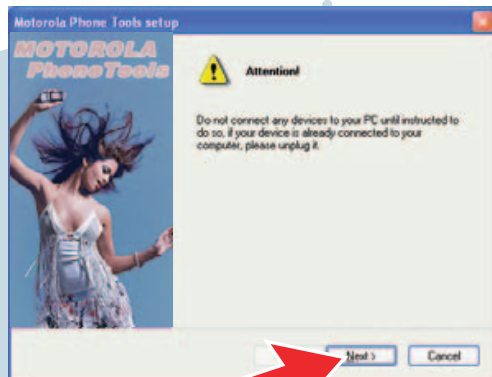
8

Enter your information and click Submit.



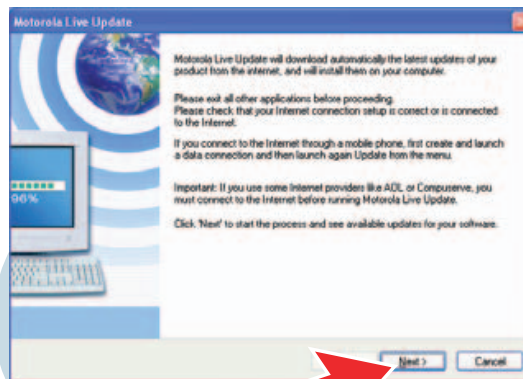
9

Click Next on the reminder to NOT connect the USB device. Click Finish to complete Setup.



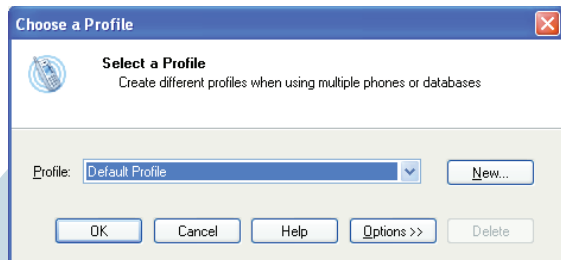
10

When Motorola Phone Tools launches, LiveUpdate will begin. Click Next to check for available software updates.



11

Create a unique user profile for your mobile phone. When complete, click OK.



MOTOROLA and the Stylized M Logo are registered in the US Patent & Trademark Office.

The Bluetooth trademarks are owned by their proprietor and used by Motorola, Inc. under license. Microsoft, Windows, ActiveSync, Windows Media, and MSN are registered trademarks of Microsoft Corporation; and Windows XP, Windows Mobile and Microsoft.net are trademarks of Microsoft Corporation. All other product or service names are the property of their respective owners.

www.hellomoto.com

© 2006 Motorola Inc.

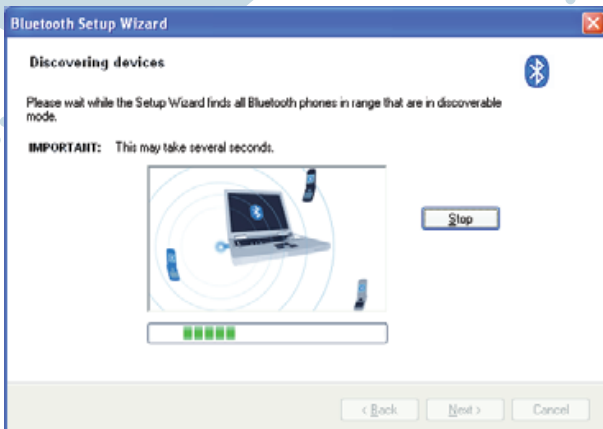
12 Do not attach the cable.
Select the connection type
and click Next.



13 Connect phone now.



14 Wait while Motorola PhoneTools
discovers phones.

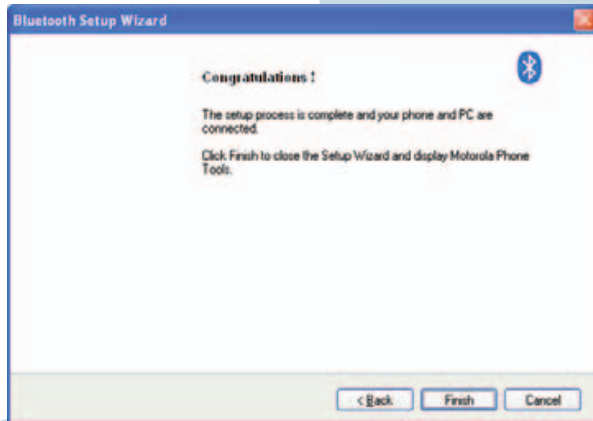


Note: If no devices are discovered, see the Troubleshooting section at the end of this guide.

*Continue with steps
on other side >*

15

Click Finish to close the Setup Wizard.



TROUBLESHOOTING

Motorola Phone Tools is not detecting my phone, but my device is connected.

You may need to update the phone list and manually detect the phone.

1. On the error message, click **Yes**.
The Motorola Live Update screen is displayed.
2. Follow the prompts to install the Live Update. Motorola Phone Tools tries to automatically detect your phone. If it is unable to find it, the Device Configuration Wizard is displayed.
3. On the Device Configuration Wizard screen, press **Next** to start the manual detection.
4. On the device list, if your phone is not listed, choose **Motorola USB modem** and click **Next**.
5. Select the **Do not automatically detect the driver. Select from a list.** checkbox and click **Next**.
6. On the Model Selection window, select your phone type and model and click **Next**.
The manual phone detection completes and Motorola Phone Tools launches.

If you need
and select Mc

1-1

FOR MORE ASSISTANCE

For additional assistance, visit <http://www.motorola.com>
Motorola Phone Tools or call the Motorola Helpline

www.hellomoto.com
1-877-MOTOBLU
1-800-331-6456 (United States)
388-390-6456 (TTY/TDD United States for hearing impaired)
1-800-461-4575 (Canada)

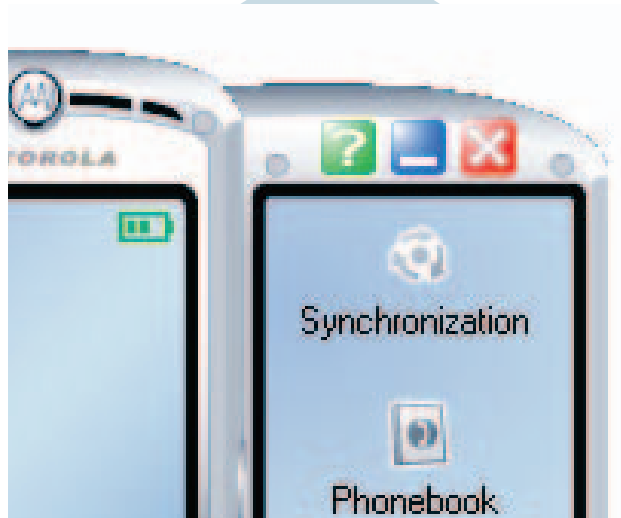
NCE

motorola.com/support/data
Help Desk at 800-331-6456.

(Hearing impaired)

Motorola

Motorola PhoneTools F Quick Tour



Features

- Synchronize phonebooks and calendars
- Manage phonebook contacts

icts



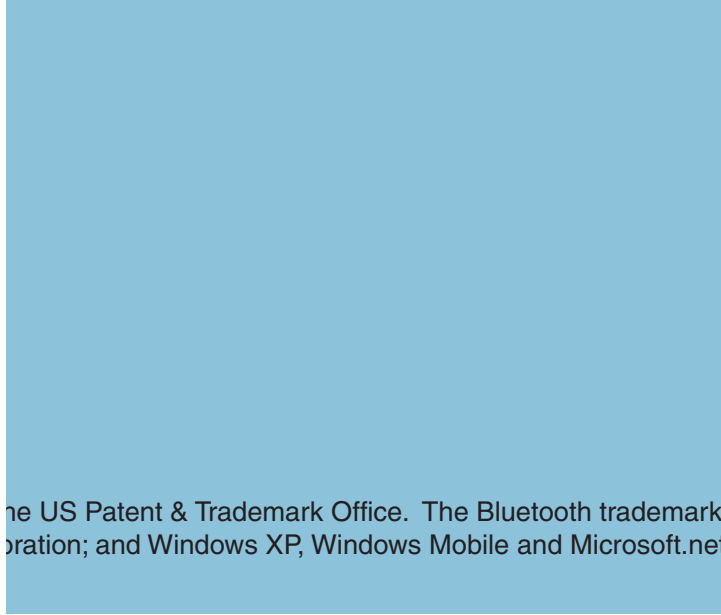


- Manage calendar tasks and appointments
- Send/Receive Email and SMS
- Manage multimedia objects
- Establish Internet connectivity
- View mobile phone information

ts
vity

Note: *Image shown may vary from screen*

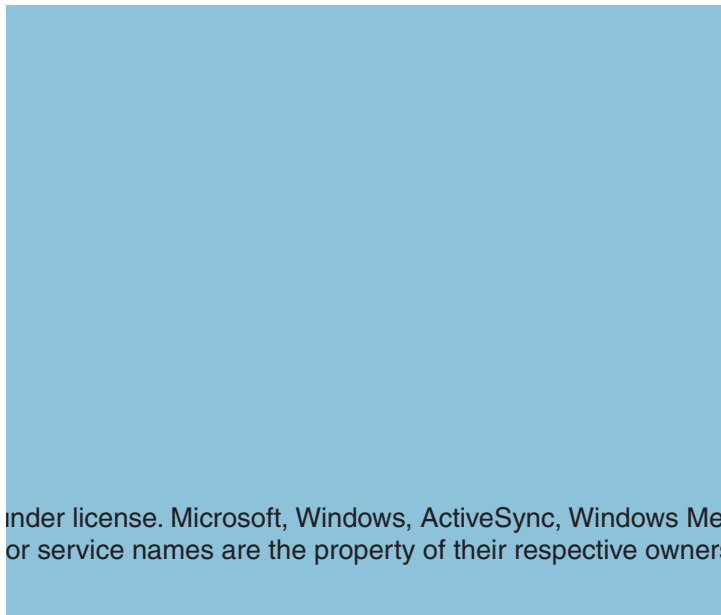
is NOT based on your particular phone shown here.



the US Patent & Trademark Office. The Bluetooth trademark is owned by their proprietor and used by Motorola, Inc. All other trademarks are trademarks of Microsoft Corporation. All other product

s are owned by their proprietor and used by Motorola, Inc. All other trademarks are trademarks of Microsoft Corporation. All other product

Actual image and features



under license. Microsoft, Windows, ActiveSync, Windows Mobile, and service names are the property of their respective owners.

dia, and MSN are registered trademarks of Microsoft Corporation.