



motorola
Phone Tools

Installation & Setup

The following steps describe how to install Motorola Phone Tools and connect your phone via cable or Bluetooth® connection to your computer.

Note: The software installation is shown on a computer running the Microsoft® Windows® XP operating system. Minor differences exist when installing this software on other Windows operating systems.

WHAT'S NEW IN MPT 5.0?



Phonebook Swap Wizard

Use a simple step-by-step wizard to move your phonebook from one phone to another.



Enhanced Multimedia

Synchronize music with Windows Media® Player 11, plus use music playlists and sync them with your phone.



Improved Support

Windows Vista® and Lotus® Domino® server support.



Refreshed Look and Feel

New task-based user interface with instructions and customizable colors.

START HERE >

INSTALL SOFTWARE

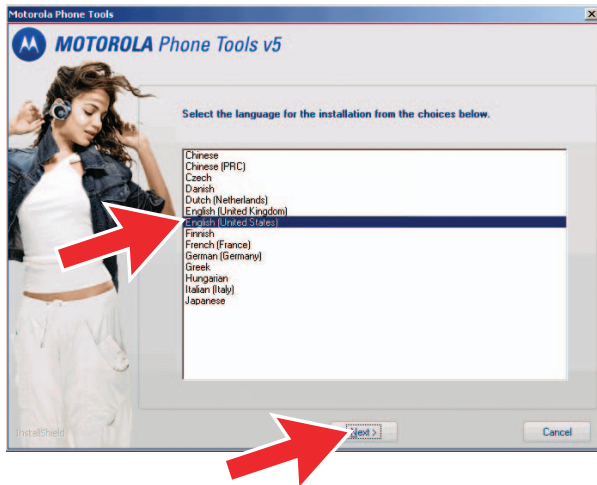
1

Insert the Motorola Phone Tools CD into your PC's CD-ROM.



INSTALL SOFTWARE *cont'd*

2 Choose your language.

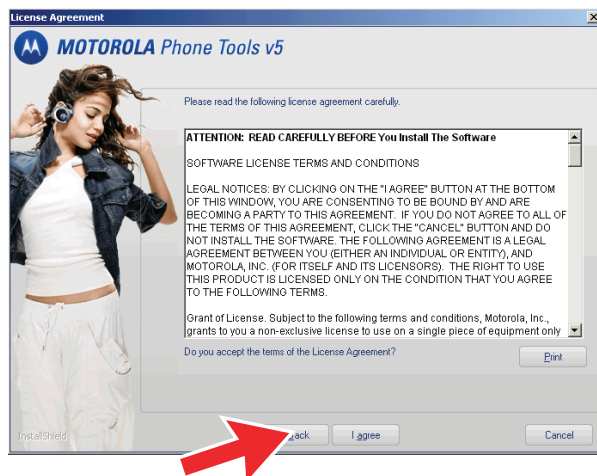


3 Welcome to InstallShield Wizard.



nued

4 Accept license terms and conditions.



5 Choose installation type.



6

Installation begins.



Note: If you see a warning message about the software not passing Windows Logo testing, click Continue Anyway.

7

To enter your registration information, click OK.



INSTALL SOFTWARE *cont*

8

Enter your information and click Submit.

A screenshot of the Motorola Phone Tools registration form. The window title is "Motorola Phone Tools". The form contains several sections: "Contact details" with fields for Title, Last name, First name, Profession, Company name, Address, Zip code, City, State, Country and region, Phone number, Fax number, E-mail, and Birthdate; "Your software" with fields for Modern (or telephone) type, Place of purchase, and Wireless service provider; and a checkbox for "Please send me Motorola product & technology updates and special promotional offers." A red arrow points to the "Submit" button at the bottom.

inued

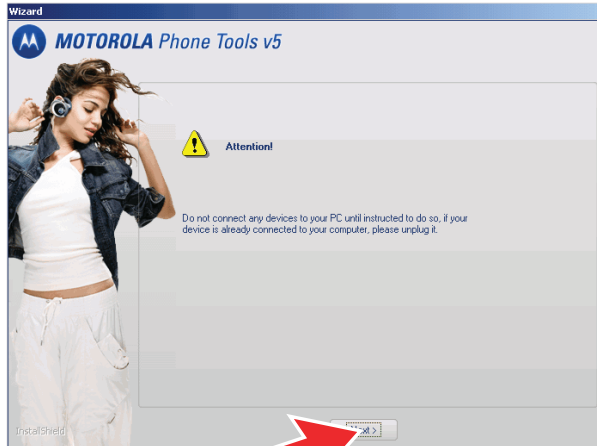
9

Complete registration.



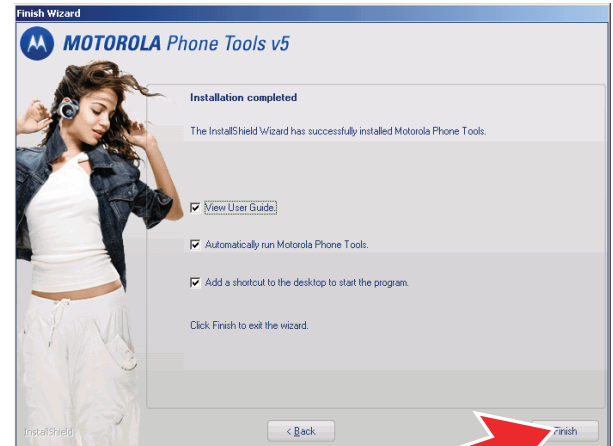
10

Click Next on the reminder to NOT connect devices to your PC yet.



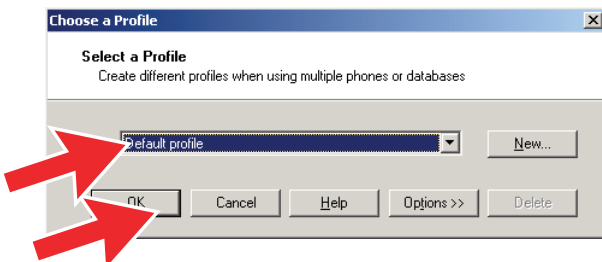
11

Click Finish to complete setup.



12

Create a unique user profile for your mobile phone. When complete, click OK.



Motorola, Inc.
Consumer Advocacy Office
1307 East Algonquin Road
Schaumburg, IL 60196

www.hellomoto.com
1-877-MOTOBLU
1-888-390-6456 (TTY/TDD United States for
hearing impaired)

Guide Number: 6809517A35-O

MOTOROLA and the Stylized M Logo are registered in the US Patent & Trademark Office. The use of wireless devices and their accessories may be prohibited or restricted in certain areas. Always obey the laws and regulations on the use of these products. The Bluetooth trademarks are owned by their proprietor and used by Motorola, Inc. under license. Microsoft, Windows, Windows Media, and Windows Vista are either trademarks or registered trademarks of Microsoft Corporation in the United States and/or other countries. Lotus and Domino are trademarks of International Business Machines Corporation in the United States, other countries, or both. All other product or service names are the property of their respective owners.

© Motorola, Inc. 2007.

INSTALL *continued*

- 13** Select the connection type.



Important: If connecting to your phone using Bluetooth, skip to step 18 on back of this guide.

CONNECT TO PHONE USING

- 14** Prepare phone to connect.



CABLE

- 15** Connect phone now.



- 16** Wait while phone is installed and set up with Motorola Phone Tools.

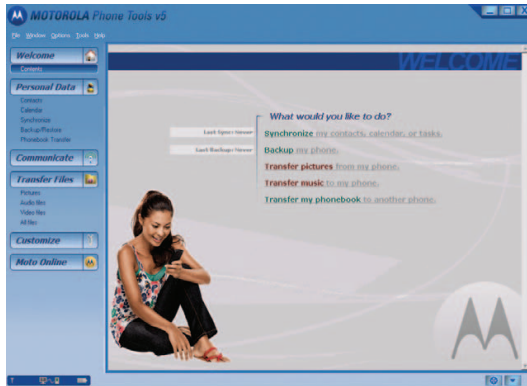


Note: If no devices are discovered, see the Troubleshooting section at the end of this guide.

Continue steps on other side >

CABLE *continued*

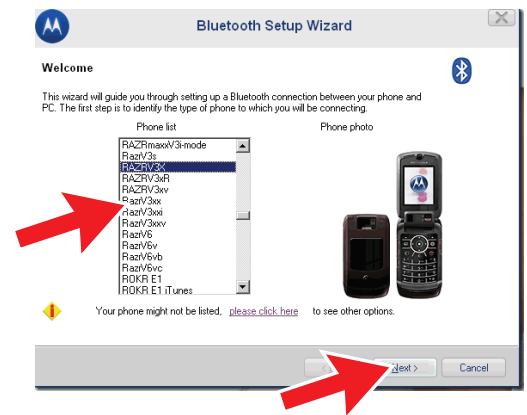
- 17** When finished, the Motorola Phone Tools window displays.



You are finished!

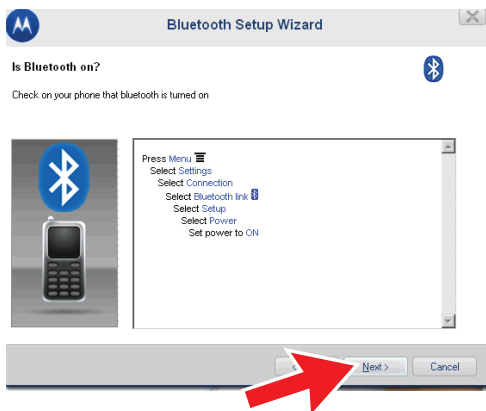
CONNECT TO PHONE USING

- 18** Select your phone in the Phone list and click Next.



BLUETOOTH

- 19** Follow instructions to turn on Bluetooth on your phone.



- 20** Follow instructions to place phone in Discoverable mode.



CONNECT TO PHONE USING

- 21** Select your phone from the list.



- 22** On your phone, press Yes, then enter the 4-digit passkey to bond with PC.

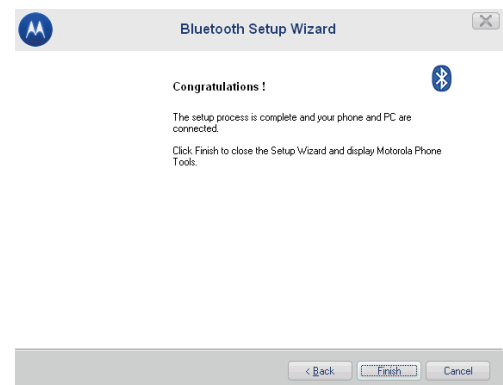


BLUETOOTH *continued*

- 23** Wait while phone is installed and set up with Motorola Phone Tools.

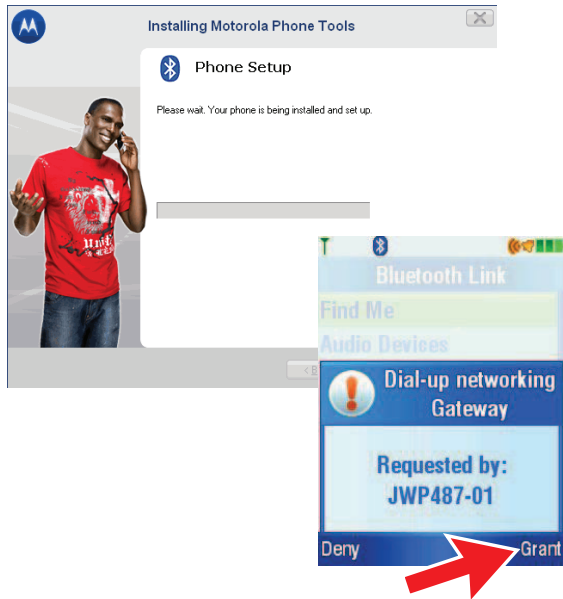


- 24** Setup wizard is complete.



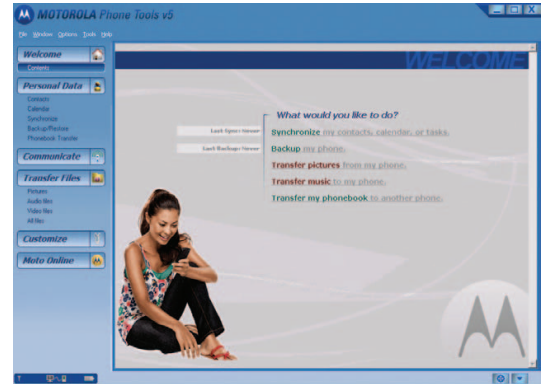
25

On your phone, press Grant to complete connection to PC.



26

When finished, the Motorola Phone Tools window displays.



You are finished!

TROUBLESHOOTING TIPS

INSTALLING SOFTWARE

If encountering problems installing your Motorola Phone Tools software, try the following:

- Uninstall any previous version of Motorola Phone Tools from PC.
- Verify you have administrator rights on your PC.
- Verify only one install program (setup.exe) is running.
- Do not connect the phone and cable to the USB port until instructed (step 15).

CONNECTING TO PHONE

If encountering problems connecting to your phone via Bluetooth, try the following:

- Make sure that any devices previously paired with the phone or PC are turned off.
- If the PC cannot find your phone (in step 20), make sure your phone is in discovery/pairing mode.
- If your phone connected before but not now, make sure your phone is on and the Bluetooth feature is on in your phone.



SUPPORT

If you need more help installing and setting up Motorola Phone Tools:

- See the detailed user guide on your Phone Tools CD (located in *User Guide* folder).
- See FAQs at:
www.motorola.com/support/phonetools
- Join user forums at:
www.bvrpforums.com/motorola



