

THE DEM PROVIDES THE GENERATION, MANAGEMENT AND CONTROL OF ANALOG CUE TONES AND SCTE-35 DIGITAL SPLICE INSERTION MESSAGES FOR LOCAL EVENT TRIGGERING.

HIGHLIGHTS INCLUDE:

- Compact 2-RU design
- 96 unique GPI trigger inputs
- Supports DigiCipher® II HCM (DTMF tone or contact closure) for analog tier delivery
- DPI standards-based (SCTE-35) message creation
- Up to 16 RS-232 trigger inputs (optional)
- 1:1 redundancy support
- SNMP MIB and trap configuration for external monitoring
- Newer chassis option provides dual power supplies
- Return Path Message Monitoring to confirm message transmission (optional)

For more information regarding any of these features contact your Motorola sales representative.



DEM

DigiCipher® Event Manager

The DigiCipher® Event Manager (DEM) provides the generation, management and control of IRD analog cue tones and SCTE-35 digital splice insertion messages for local event triggering. Splice Insertion Messages are sent directly from the DEM, while IRD analog cue tones are the result of Hardware Control Messages sent from the DEM. The DEM has an intuitive GUI that provides the ability to create and manage scripts that are triggered by either predetermined schedule, RS-232, commands or GPI triggers. This system has the flexibility to communicate either via HDLC or TCP/IP to both the DigiCipher II MSE and the TMX-2010 system.

The DEM system is comprised of a rack mount PC and integrated keyboard monitor and has a GPI input block that can accept up to 96 unique triggers.

Motorola has continued to advance trigger delivery management by adding an optional return path message monitoring to "close the loop". This feature utilizes four built-in ASI inputs and creates a log for the created trigger message and the confirmation upon return or an error message if the message is not returned. The DEM also has a comprehensive SNMP MIB that can be used for external monitoring of traps.

Motorola has not overlooked the ever-increasing focus and importance of trigger delivery and has designed a 1:1 redundant solution for maximum reliability. Also, the DEM can be ordered with dual, built-in, power supplies.

TECHNICAL SPECIFICATIONS

Input Triggers

GPI DI/O:	96 Input Trigger Block
RS-232:	Standard
Optional Expansion:	16
Optional Input Device:	ASI 4-port input

Output Communication

HDLC:	1
ENet:	1
Input Monitoring:	ASI 4-port input (on DEM 3.0 Advanced only)

Devices and Versions Supported

DEM 2.1	MSE 5.52 and MSE 4.06
DEM 2.5	TMX 5.0 or greater
DEM 3.0	MSE 7.0, 7.01, 7.1

Ordering Guide

DEM 2.1	487859-004
DEM 2.5	487859-003
DEM 3.1 Standard	487859-007
DEM 3.1 Advanced	487859-008

- Intuitive Java® based application
- Help capability is embedded into the application
- Script (event) management and creation

Physical

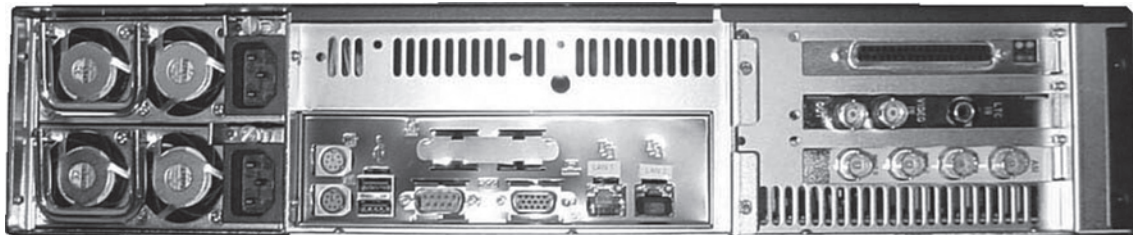
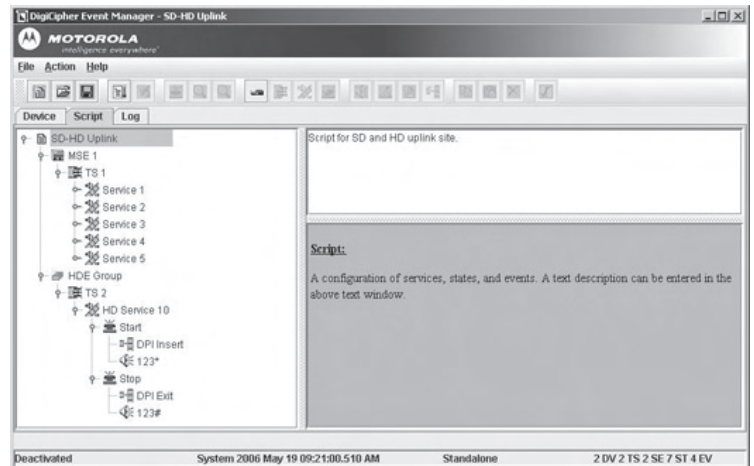
Dimensions:	48.3 cm/19" (W) x 65 cm/25.6" (D) x 9 cm/3.5" (H)
Weight:	20.4 kg/45 lbs
Mounting:	19" rack mount
Fans:	Two 50.6CFM
Air Flow:	Back and side cooling
Power:	Dual redundant 460 Watt with PFC; 115/230VAC input

Environmental

Relative Humidity:	10 - 90% non-condensing
Temperature Range:	0° - 40° C (operating) - 40° - 60° C (non-operating)
Shock:	30g acceleration peak (11ms pulse)
Vibration:	5 - 17 Hz 0.5" double amplitude displacement; 7-2000Hz, 1.5g acceleration

Other

Limited Warranty:	One year
Compliance:	FCC, CE and UL



Dual Power Supply Chassis - provided on all new DEM 3.1 Hardware shipments



Motorola, Inc. Connected Home Solutions
6450 Sequence Drive, San Diego, California 92121 U.S.A.
www.motorola.com/broadband 858-404-1500

MOTOROLA and the Stylized M Logo are registered in the U.S. Patent and Trademark Office.
All other product or service names are the property of their registered owners. DigiCipher is a registered trademark of General Instrument Corporation. Microsoft Windows screen shots are used by permission of Microsoft Corporation. Java and all other Java-based marks are trademarks or registered trademarks of Sun Microsystems, Inc. in the U.S. and other countries. © Motorola, Inc. 2006
All rights reserved.
Features and functions subject to change without notice.
5659-0806-0K