



MOTOMAPPING

Location Tracking Solutions



Enhance personnel safety and fleet security Improve resource allocation and responsiveness

Knowing where your organisation's resources are at any given time is becoming increasingly important. With the growing availability of GPS-enabled devices it is now possible to proactively track your resources.

MotoMapping is a client/server application that receives device locations from MotoLocator, the Motorola Location Server, and displays those locations spatially, in real time, against a backdrop of commercially available or customer-produced maps and overlays. MotoMapping offers this view of your mobile resources displayed on a computer-based map on one or more terminals throughout your organisation.

MotoMapping has all the features that you'd expect from a mapping solution and also includes the ability

to send control messages to the mobile resources instructing them to change the way in which they report their position.

Overview

MotoMapping is a computer-based map display that shows vehicle and personnel locations.

MotoLocator gathers location information from devices and passes it to MotoMapping to give this spatial view of mobile resources.

MotoMapping is supplied as a map server that integrates into MotoLocator, together with map clients that display the maps and resource locations.

MotoMapping can be installed in a variety of languages.

SPECIFICATION SHEET

MOTOMAPPING
Location Tracking Solutions

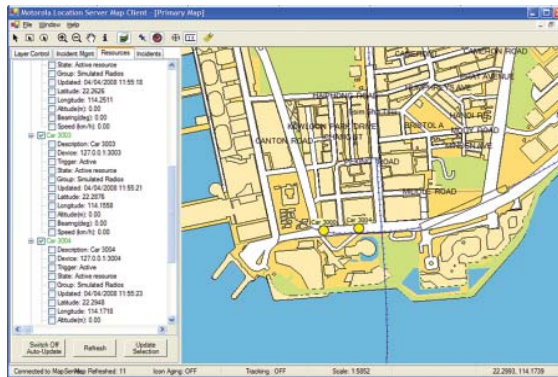
Multi-device, multi-network

Because MotoMapping is fully integrated into MotoLocator, it can be used with many different device types and over a variety of different communications networks including:

- TETRA
- ASTRO
- GSM - GPRS

Live display of resources

The main screen within MotoMapping provides a live display of where your resources are. You can choose which resources to display from a simple selection list. And it's easy to zoom in and out of the map as well as move around.



Other features include:

- Multiple live windows - allowing you to monitor different regions simultaneously.
- Resource tracking - keeps a resource centred in the screen and moves the map underneath the resource.
- Find a resource - select a resource from the list and centre the map on its location.
- Icon aging - only show resources if their location has been recently updated.
- Alarm handling - change the icon for a resource if an emergency button on the device has been pressed.

Controlling your resources

You can select one or more resources on the map and send a message to either:

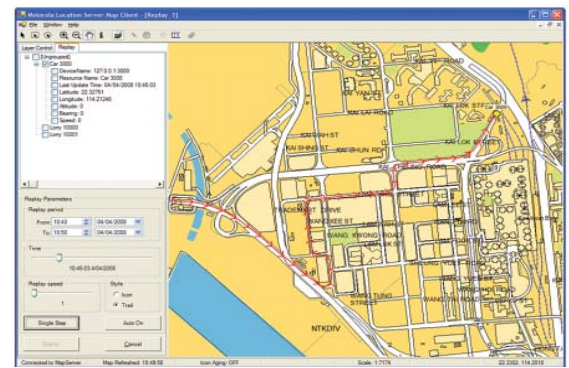
- Ask them to report their location immediately

- Change the rate at which they report their location. This can be based on time between updates or the distance moved since the last update.

History replay

MotoMapping also has a sophisticated playback feature allowing you to retrieve historic position data and replay it - allowing you to analyse where your resources have been.

MotoMapping allows you to open a separate replay window to display where one or more devices have been. You have complete control over the replay speed and the time period to replay.



Incident management

A basic incident management system is an option on MotoMapping - allowing you to create incidents that your resources are dealing with on the map, and to share them across all mapping clients.

Understanding your needs

In today's world, it pays to have a solutions provider who understands the value of Mission Critical solutions and the importance of the lives and well-being of your employees and the business processes they are delivering.

Motorola is a well established worldwide provider of interoperable communications systems to the Public Safety market and mission critical solutions are our core business. Our experience, along with our skills, people and partnerships allow us to build innovative, fully integrated technologies that let organizations like yours share vital information with ease and confidence.

With over 75 years in the communications business, you are assured of a solid and well established partner.

For more details...

Visit the Motorola website at <http://www.motorola.com>
Or contact david.barry@motorola.com



MOTOROLA

motorola.com

Part number SS-MOTOMAPPING. Printed in USA 07/08. MOTOROLA and the Stylized M Logo are registered in the US Patent & Trademark Office. All other product or service names are the property of their respective owners. ©Motorola, Inc. 2008. All rights reserved. For system, product or services availability and specific information within your country, please contact your local Motorola office or Business Partner. Specifications are subject to change without notice.