



BULGARI SpA DEPLOYS MOTOROLA'S WIRELESS NETWORKS

WORKING CLOSELY WITH INTEGRA AND MOTOROLA, BULGARI SPA ACHIEVES SIGNIFICANT TIME SAVINGS, AN INCREASE IN PRODUCTIVITY AND A RAPID ROI



Bulgari S.p.A. is the parent company and the owner of the brand name. It is responsible for the areas of product development, marketing, finance, information systems and management of human resources for the Bulgari Group. The Bulgari group has 52 companies worldwide, over 4000 employees and 273 stores.

Traditional paper based processes had previously been in place in the two production plants in Solonghella and Valenza: Bulgari wanted to automate its procedures and introduce a reliable wireless network with a high level of security. Using mobile devices to monitor production phases, the business aimed to reduce downtime and improve accuracy. Bulgari approached Integra S.r.l as a Motorola Business Partner.

CUSTOMER PROFILE

Bulgari SpA is an international name in the luxury brand market, synonymous with Italian style and fine jewellery for over a century

Location

Head Office in Rome

Industry

Manufacturing and marketing of jewellery and luxury products

Partner profile

Integra S.r.l. is the market leader in mobile computing in Italy, supplying software solutions and IT Management services for all parts of the supply chain from production, to logistics and distribution. In its capacity as IT partner, Integra is able to guarantee a detailed control of production processes and a noticeable improvement in workforce efficiency. Integra has a wealth of knowledge and experience in the development of mobility sector specific software and radio frequency infrastructures

BVLGARI

CASE STUDY

BULGARI SPA – MANUFACTURING AND MARKETING

“We needed to update our operational systems at our production sites to increase security, accuracy and productivity. View the type of our work and products, we needed an extremely secure wireless system, to ensure protection against possible web attacks. Thanks to its great knowledge and experience in the field of wireless networks and Motorola products, Integra found the right solution and configuration of the equipment to suit our needs.”

Angelo Nicotra, Technical Support Specialist, Bulgari SpA

THE REQUIREMENT

A modern solution offering high levels of security

In the past Bulgari SpA used a manual paper based system to record operations at its production sites. The system was time consuming and was not economically efficient or secure. To improve productivity, it wanted to install a modern IT system, which was cutting edge from the point of view of data security.

The complex architecture of the Bulgari network and the requirement for such a level of security proved a challenge for the Integra technical team, who, nonetheless, managed to configure all the equipment ideally to the requirement.

THE SOLUTION

Installation of wireless networks and complete automating of production processes: a technologically advanced, secure solution

Integra proposed a complete Motorola solution to Bulgari. It comprised of a 5 Ghz wireless network, offering high level protection and reliability, and RFMS software to control and manage the network. To make full use of the new infrastructure Integra also recommended Motorola's MC3100 mobile computers. These robust mobile devices offer high performance, functionality and flexibility for production plant staff and work perfectly in conjunction with a MSP platform for control, configuration and maintenance. All the products benefit from Motorola technical support and maintenance packages.

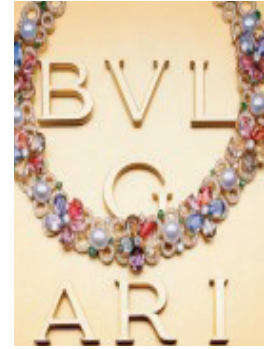
It took approximately 3 months to install the complete wireless infrastructure, the terminal management software and to ensure that the whole system was fully operational. Thereafter followed a two week testing phase, which proved crucial to ensure all the users were fully trained on the new processes and functionalities. The data collection devices, which were linked in real time to the software processes, were easy and intuitive to use.

THE BUSINESS VALUE

Improved efficiency and security and a rapid ROI

Bulgari SpA found the new wireless infrastructure easy to manage, efficient and secure. Moreover, the use of the terminals increased production staff productivity and significantly reduced production errors.

“Our employees appreciate the ease of use and the reliability of the products; both the systems and terminals give optimal performance. Now they can work productively and efficiently,” observes Angelo Nicotra. “We have enjoyed time savings and a reduction in operational costs; we are expecting a return on investment within 18 months of the deployment. Integra and Motorola have not only met all of our needs, they have exceeded our expectations.”



Motorola products

- RFS6010 Wireless Switch – 4 units
- RFS4010 Wireless Switch – 2 units
- AP650 Access Point – 19 units
- ML-2452-APA2-01 Dipole Antenna – 76 units
- Mobility Service Platform MSP 3.0
- RFMS Server for 50 AP
- MC3100 Mobile Computer
- Motorola maintenance programme

Solution features

- Exceptionally reliable 5 Ghz wireless network with a high level of security and protection
- Mobile computers for automated control of manufacturing processes
- Centralised management of the networks and terminals
- Technical support and maintenance
- Total solution supplied by Integra and Motorola

Benefits features

- Highly secure and reliable wireless network
- Increased control of the manufacturing plants
- Improvement in the efficiency and visibility of production operations
- Increased performance and reduction in errors along the production line
- Significant time and cost savings in manufacturing processes: ROI expected within 18 months
- Optimisation of hardware performance

For more information on these products and solutions please visit us on the web at www.motorolasolutions.com or access our global contact directory at www.motorola.com/enterprisemobility/contactus

www.motorolasolutions.com

MOTOROLA, MOTO, MOTOROLA SOLUTIONS and the Stylized M Logo are trademarks or registered trademarks of Motorola Trademark Holdings, LLC and are used under license. All other trademarks are the property of their respective owners. ©2011 Motorola Solutions Inc. All rights reserved.

