

AirBEAM[®] Manager

Comprehensive Mobility Management for
Wireless Networks



WIRELESS LAN MANAGEMENT SOFTWARE

Comprehensive Management Software for Complete Control of Your Wireless LAN

AirBEAM[®] Manager from Symbol Technologies delivers a new standard in the level of control of your wireless LAN. This software solution is the most complete package available for configuring and managing your Spectrum24 wireless local area network (WLAN), with all the tools necessary to address the unique dynamic elements of wireless networks and mobile devices, from roaming and random connections to power management and more.

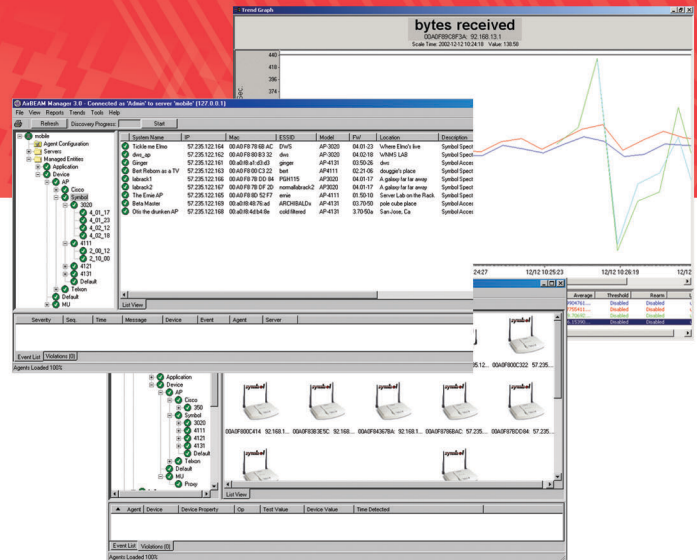
Easy-to-Use, Packed with Time and Money-Saving Features

AirBEAM Manager is packed with features that reduce the time and costs of managing your wireless network. Integration with your corporate enterprise network management platform enables you to install, configure, monitor and manage your entire LAN—wireless and wired—from a central console located anywhere within the network. AirBEAM Manager's many features make even the most complex wireless environment manageable. The graphical user interface is intuitive and easy to use, regardless of the size of your network. Other features greatly simplify tasks that were tedious and time consuming. Group management, for example, enables configurations, updates and more to be simultaneously executed for a group of access points that you specify.

The Flexibility to Meet Your Needs Today and Tomorrow

AirBEAM Manager scales to fit any size network. A migration and expansion path enable you to manage a broad spectrum of networks, from a single stand-alone site to enterprise-wide, complete with a management system such as HP OpenView[®] or IBM Tivoli NetView[®]. Designed for flexibility, AirBEAM Manager supports today's wireless networking protocols, including 802.11a/b direct sequence and 802.11 frequency hopping, with expansion capability to support future wireless standards, ensuring that technology does not outpace your management tool.

Regardless of how much your company may grow or requirements may change in the future, AirBEAM Manager delivers the flexibility to meet your needs. AirBEAM Manager is part of Symbol's AirBEAM suite, a comprehensive set of mobility management tools that maximize the availability, security and effectiveness of your wireless network investment. To find out how you can gain greater command of your wireless network than ever before, visit www.symbol.com/airbeam



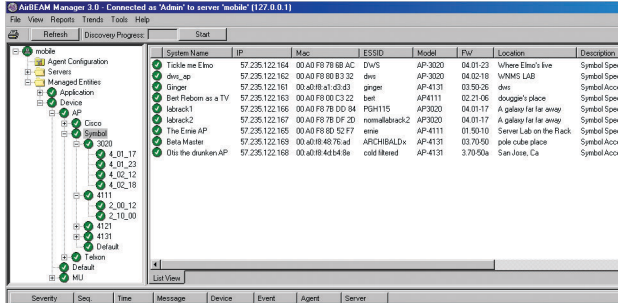
Features	Benefits
Role-based security access	Various management levels ensure match of access and skills
Thresholds and events notification	Triggers alerts to avoid system problems or failure; provides real-time updates on network events
Intelligent collector architecture with subnet and group-level configuration	Scalable, enabling management of any size wireless LAN
802.11a/b and 802.11 support, expandable for future wireless standards	Supports your network today as well as in the future, providing protection for your investment
Network Mapping: Network System Tree; Custom Maps	Concise network representation and association to physical world
Auto-discovery and configuration process	Simplifies initial configuration with automatic discovery of all your access points
Configuration Monitoring	Maintains configuration accuracy through continuous monitoring and event notification of changes
Enhanced data trend and reporting	Tracks and trends network traffic and usage for proactive analysis of network utilization
Custom reports; export of data to other programs	Freedom to design the reports you need to best manage network
Group management and configuration database	Enables simultaneous execution of changes for specific group of access points; saves time and money
Enterprise Management Platform Integration	Central control of wireless and wired network infrastructure
AirBEAM Smart integration	Centralized application and system software distribution; real-time client software update and configuration reporting
Public/Private, PAT/NAT Network Support	Enables management of a variety of enterprise network configurations

AirBEAM Manager Specification Highlights

Performance Characteristics

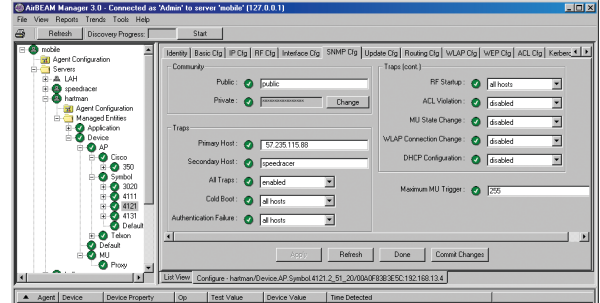
AirBEAM Manager Integrated: Management Platforms: OpenView-Solaris, HP-UX, Windows NT/2000; Tivoli/NetView-AIX

AirBEAM Manager Enterprise: Single or multi-site stand-alone; supports Windows NT/2000, Linux



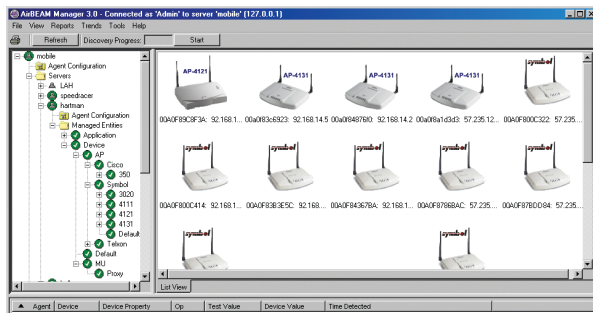
AirBEAM Overview Screen

The enhanced user interface allows you to drill up or down to view all of your devices listed by manufacturer, model, and firmware version.



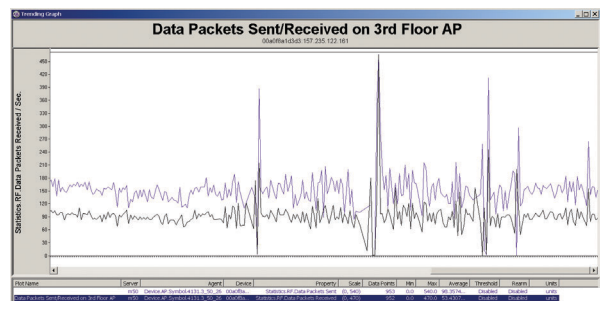
AirBEAM Options Screen

AirBEAM Manager's tabbed configuration screen allows you to easily configure options.



AirBEAM Icon View Screen

AirBEAM Manager's icon view enables you to easily identify the managed access points or mobile devices.



AirBEAM Trend Screen

The improved trending feature now allows you to track any parameter and then display in an easy to understand graph.

Specifications are subject to change without notice. Symbol® and AirBeam® are the registered trademarks of Symbol Technologies, Inc. All other trademarks and service marks are proprietary to their respective owners.

For system, product or services availability and specific information within your country, please contact your local Symbol Technologies office or Business Partner.



Corporate Headquarters
Symbol Technologies, Inc.
 One Symbol Plaza
 Holtsville, NY 11742-1300
 TEL: +1.800.722.6234/+1.631.738.2400
 FAX: +1.631.738.5990

For North America, Latin America and Canada
Symbol Technologies
 The Americas
 One Symbol Plaza
 Holtsville, NY 11742-1300
 TEL: +1.800.722.6234/+1.631.738.2400
 FAX: +1.631.738.5990

For Asia Pacific Area
Symbol Technologies Asia, Inc.
 (Singapore Branch)
 Asia Pacific Division
 230 Victoria Street #05-07/09
 Bugis Junction Office Tower
 Singapore 188024
 TEL: +65.6796.9600
 FAX: +65.6337.6488

Symbol Website
 For a complete list of Symbol subsidiaries and business partners worldwide contact us at:
www.symbol.com

E-mail
info@symbol.com

For Europe, Middle East and Africa
Symbol Technologies
 EMEA Division
 Symbol Place, Winnersh Triangle
 Berkshire, England RG41 5TP
 TEL: +44.118.9457000
 FAX: +44.118.9457500



Part No. AIRMGR Printed in USA 12/02 © Copyright 2002 Symbol Technologies, Inc. All rights reserved. Symbol is an ISO 9001 and ISO 9002 UKAS, RVC, and RAB Registered company, as scope definitions apply.

