



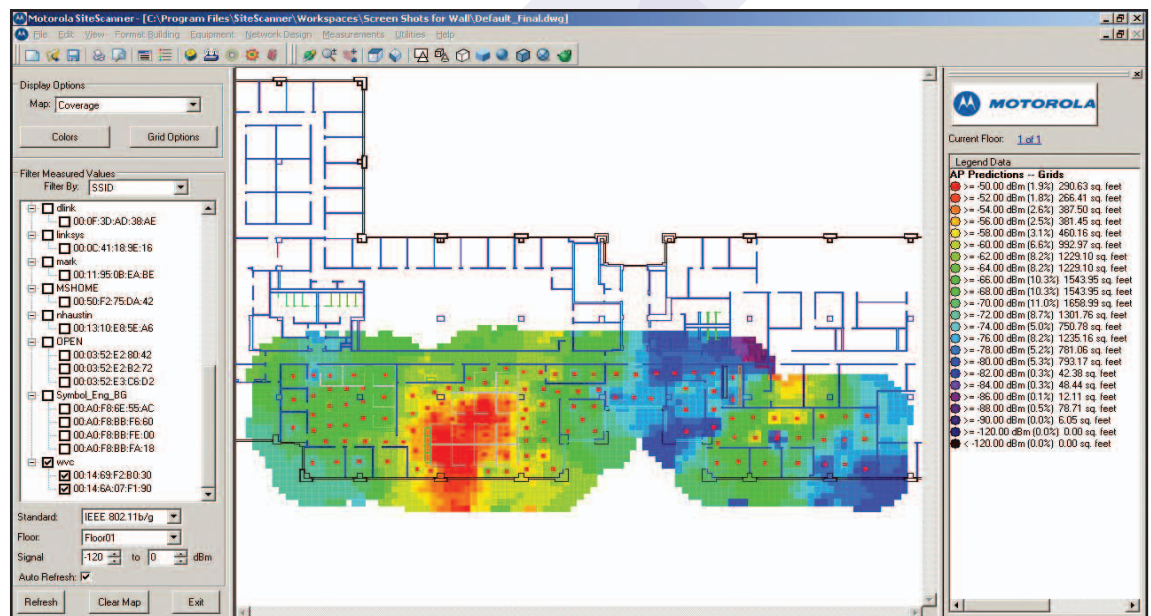
# SiteScanner™

## Powerful 802.11 a/b/g/n WLAN Site Survey and Design Software

SiteScanner is an easy to use site survey, troubleshooting, design and install tool for 802.11 a/b/g/n networks. With a map-based interface for quick and easy data collection, SiteScanner allows you to determine and verify network coverage, noise, and AP channel assignments, identify and locate rogue access points, and visualize the impact of neighboring networks. SiteScanner also measures actual client throughput and data rate performance for 802.11 a/b/g/n networks and other important metrics for wireless VoIP such as packet latency and jitter.

## Site-Specific Spectrum Analysis for Custom Frequencies

SiteScanner can also collect data from select spectrum analyzers allowing detailed spectrum network coverage and trouble-shooting verification for a wide range of frequencies such as 802.11a/b/g/n, 3G, CDMA, GSM, and iDEN networks. SiteScanner displays real-time information and produces customized visualizations that help ensure reliable performance with less downtime and cost. SiteScanner is also the only survey tool that allows export of measurement data into predictive design software for true optimization and prediction engine enhancement when used with Motorola LANPlanner® or EnterprisePlanner.



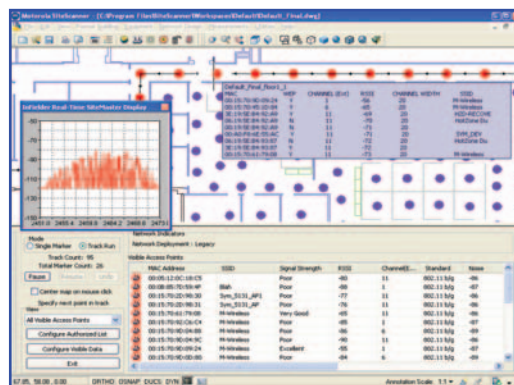
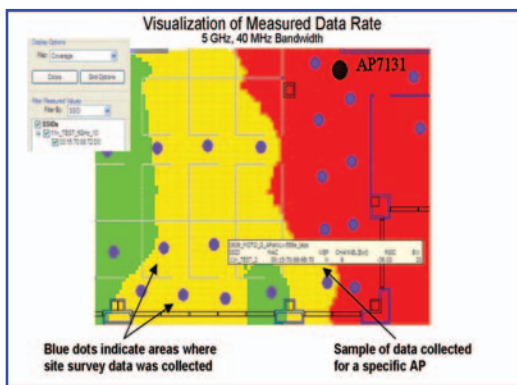
## One Point Wireless

LANPlanner is part of our One Point Wireless approach, which builds on over 80 years of wireless expertise and the use of cutting edge visualization technology to deliver smart, integrated wireless network design and management tools for indoor and outdoor deployments. With the ability to work together and share information, these industry-leading tools streamline and simplify the flow from wireless network design to operation to security. Even in complex, multi-vendor network deployments, they help deliver solid, secure wireless solutions that you can trust.

[motorola.com/onepoint](http://motorola.com/onepoint)

## SiteScanner Key Features and Benefits

- Identify Infrastructure Location and Settings
- Survey 802.11 a/b/g/n, 3G, CDMA, GSM, iDEN and Custom Bandwidths
- Perform Active or Passive 802.11 Surveys
- Identify Problem Spots: Dead Zones, Roaming Regions, Noise
- Analyze Metrics That Affect Wireless VoIP Performance
- Visualize Areas of Network Degradation Due to Legacy Equipment
- Identify and Classify Rogue and Unauthorized APs
- Multi-vendor support
- Perform End-to-End IP Connectivity and Throughput Tests
- Analyze 802.11n Data Rate Performance
- Record and Visualize Data from Select Anritsu Spectrum Analyzers
- Integrate Data with Motorola LANPlanner or EnterprisePlanner
- Export Network Plan to Motorola's RF Management Software and AirDefense Solutions
- Produce Professional Reports



**Total Network Visibility**

SiteScanner auto-populates all visible access points and their MAC addresses. Visibility into all access points allows IT managers to identify rogue APs and wireless equipment from neighboring offices that may impact the user experience in their deployment environment.

**Map-Based Interface for Ease and Speed**

SiteScanner’s map-based interface makes site surveys quick and painless. Simply import formatted drawings, raster images or raw CAD files using the import wizard. Users then identify their location within the map, and SiteScanner collects the network’s vital statistics with clicks on the screen.

**11n Measurement and Validation Functionality**

SiteScanner provides users the ability to visualize the site-specific MIMO (Multiple Input Multiple Output) effects of their deployed 802.11n network, whether it is a mixed a/b/g/n network or a homogeneous 11n network. Hybrid Network Overlap allows network planners to determine better performance potential due to the presence of 11n APs and to locate where legacy equipment is hindering 11n technology. Channel Width Performance verifies that clients associating and transmitting/receiving data to 802.11n APs are using the full channel width.

**Network Performance Validation**

By generating network traffic, SiteScanner allows the capture of network-level data such as throughput, packet latency, retry rates and jitter. Test and measure the client-AP and client-server links as well as stress test to determine the maximum available bandwidth. Round-trip times, packet error rate, packet timeout, transmit bandwidth and peak data rate are some of the many valuable statistics collected using SiteScanner.

**Customizable Visualizations and Analysis**

SiteScanner generates customizable visualizations and reports for clear analysis. All customizable views can be reviewed on a per access point, per channel, per standard or per network basis and can be exported as professional reports in Microsoft Word format.

**Real-Time Measurements**

Real-time measurements are collected point by point (manually) or in multiple points plotted along a straight line between the user’s start and end points (continuous). SiteScanner records live RSSI, noise levels, and data rate as well as 11n statistics such as channel width, guard interval and MIMO performance—actual activity in real time.

**SiteScanner™ Specifications**

**System Requirements**

|   |
|---|
| Intel® Pentium® IV processor or later, 1.5 GHz  |
| 1 GB RAM  |
| Microsoft® Windows® XP, Windows® Vista, or Windows® 7   |
| 300 MB hard disk for installation   |
| Microsoft Word® XP, Vista (Word 2002, 2003, 2007) required for generating reports                                     |
| Standard 90-day software warranty<br>One and three-year service contracts available                                   |
| Wireless Adapters: <a href="http://onepointwireless.com/rfdesign/adapters">onepointwireless.com/rfdesign/adapters</a> |

**Ordering Information**

|                                |   |
|--------------------------------|---|
| SiteScanner™                   | RVN5237A  |
| Upgrade                        | RVN5221A available for licenses with current service contracts only |
| Maintenance Service Agreements | RVN5238A - 1 year<br>RVN5239A - 3 years                             |

**Contact Information**

|                  |  |
|------------------|--|
| Toll Free in USA | 800.901.6484 option 1  |
| International    | +1 512.427.7538  |
| Web              | <a href="http://www.motorola.com/rfdesign">www.motorola.com/rfdesign</a> |



Part number RVN5237A. The information presented herein is to the best of our knowledge true and accurate. No warranty or guarantee expressed or implied is made regarding the capacity, performance or suitability of any product. Product specifications subject to change without notice. LANPlanner is a registered trademark of Motorola, Inc. MOTOROLA and the Stylized M Logo are registered in the U.S. Patent and Trademark Office. All other product or service names are the property of their registered owners. © Motorola, Inc. 2009