



MOTOMESH Duo Software Upgrade Tool Users Guide

May 2008

This page intentionally left blank.

Copyrights

The Motorola products described in this document may include copyrighted Motorola computer programs. Laws in the United States and other countries reserve for Motorola certain exclusive rights for copyrighted computer programs. Accordingly, any copyrighted Motorola computer programs contained in the Motorola products described in this document may not be copied or reproduced in any manner without the express written permission of Motorola. Furthermore, the purchase of Motorola products shall not be deemed to grant either directly or by implication, estoppels or otherwise, any license under the copyrights, patents or patent applications of Motorola, except for the normal nonexclusive, royalty-free license to use that arises by operation of law in the sale of a product.

Disclaimer

Please note that certain features, facilities and capabilities described in this document may not be applicable to or licensed for use on a particular system, or may be dependent upon the characteristics of a particular mobile subscriber unit or configuration of certain parameters. Please refer to your Motorola contact for further information.

Trademarks

Motorola, the Motorola logo, and all other trademarks identified as such herein are trademarks of Motorola, Inc. All other product or service names are the property of their respective owners.

Copyrights

© 2008 Motorola, Inc. All rights reserved. No part of this document may be reproduced, transmitted, stored in a retrieval system, or translated into any language or computer language, in any form or by any means, without the prior written permission of Motorola, Inc.

This page intentionally left blank.

This page intentionally left blank.

Upgrading Infrastructure Devices Using the Software Upgrade Tool

If you are not using MeshManager, perform all steps listed in Procedure 1 to accomplish the required upgrades using the standalone Software Upgrade Tool (SUT). The SUT is located in the *DIR\SUT* directory on the Device Install and Firmware Upgrade CD.



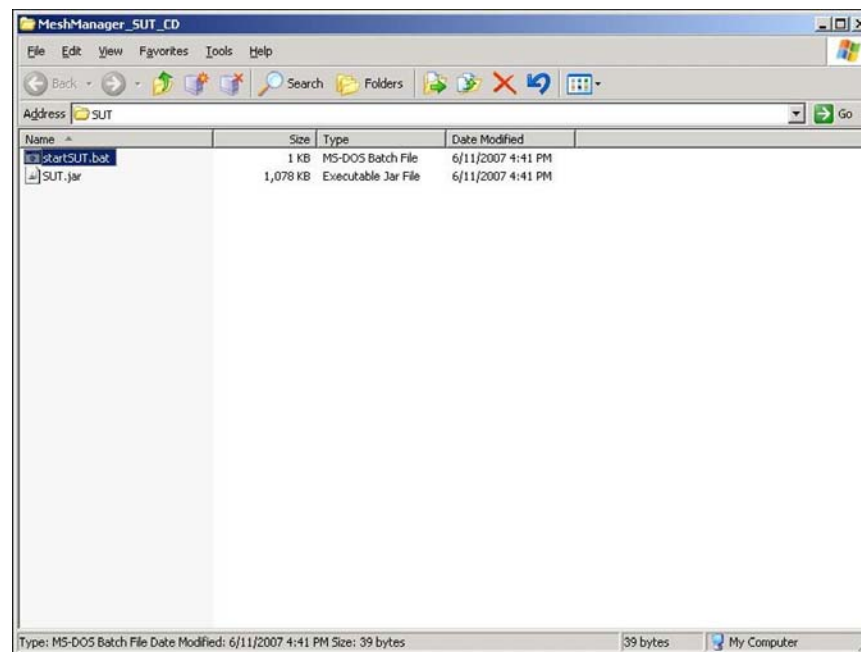
NOTE

Java 1.6 or higher is required to be installed before using the Software Upgrade Tool.

Procedure 1 Using the Software Upgrade Tool to Upgrade Infrastructure Devices

- 1 To launch the standalone Software Upgrade Tool (SUT), insert the product CD and navigate to the *DIR\SUT* folder. Double-click the **startSUT.bat** icon.

Figure 1 startSUT.bat Batch File



2 The Software Upgrade Tool is displayed.

Figure 2 Initial Software Upgrade Tool Dialog

IP Address	Version	Status
------------	---------	--------

During the upgrade process:

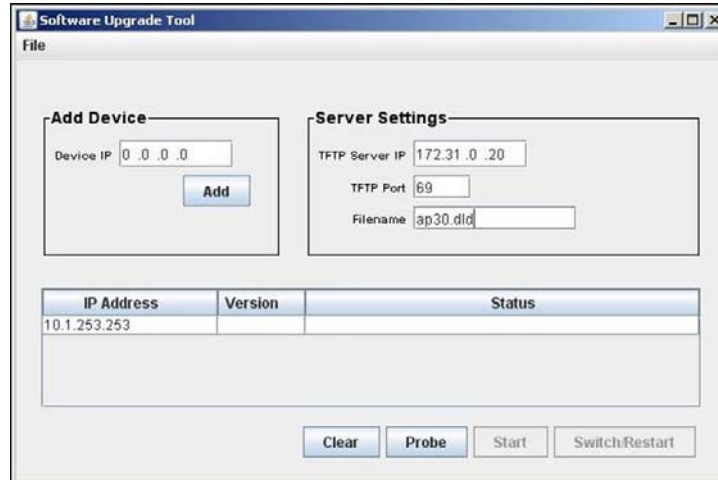
1. Click **Clear** to clear all device entries in the table.
2. Click **Probe** to verify SNMP connectivity and run queries to determine the current software version and status for the device.
3. Click **Start** to initiate the device upgrade process. The Start button is only active after the Probe operation is complete.
4. Click **Switch/Restart** to identify the current firmware load slot for the device and issue a restart command for the device(s). The Switch/Restart button is inactive during the restart process.
5. Enter the IP address in the **Device IP** field and click **Add**. If the IP address is invalid, an error message will be displayed. Verify the correct address for the device and repeat the procedure. Repeat this step for any additional devices to be added to the network.

Figure 3 Add Device IP Address

IP Address	Version	Status
------------	---------	--------

- Enter **TFTP Server IP**, **TFTP Port**, and **Filename** for the firmware file in the Server Settings panel text boxes.

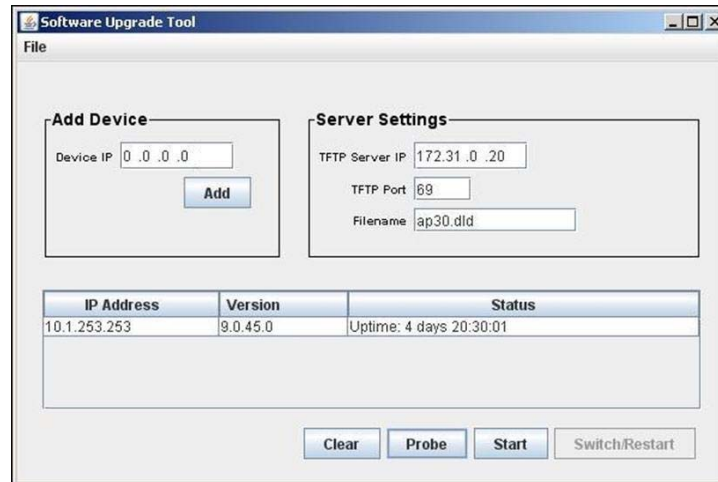
Figure 4 TFTP Server Settings



If an invalid IP address has been entered for the TFTP Server, a warning will be displayed at the beginning of the **Start** process. The correct IP address must be entered before continuing the upgrade process.

- Click **Probe** to probe devices listed in the table.

Figure 5 Probe Operation Results

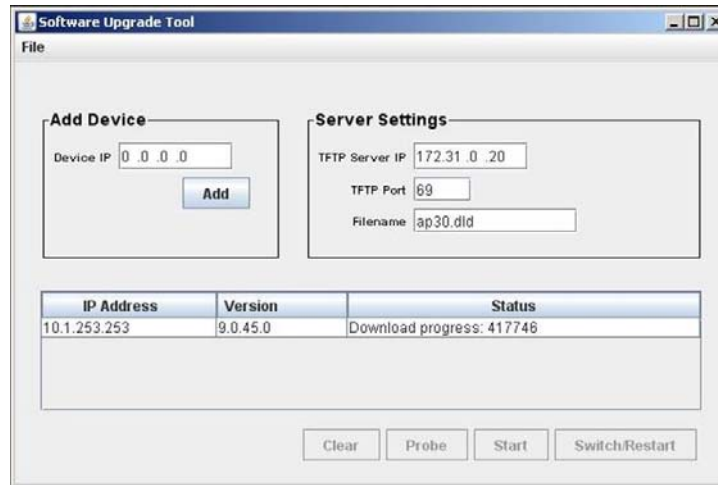


NOTE

Stop the upgrade procedure if the Probe operation is not successful.

- Click **Start** to initiate the upgrade process. The status field will be updated with the current download progress status information.

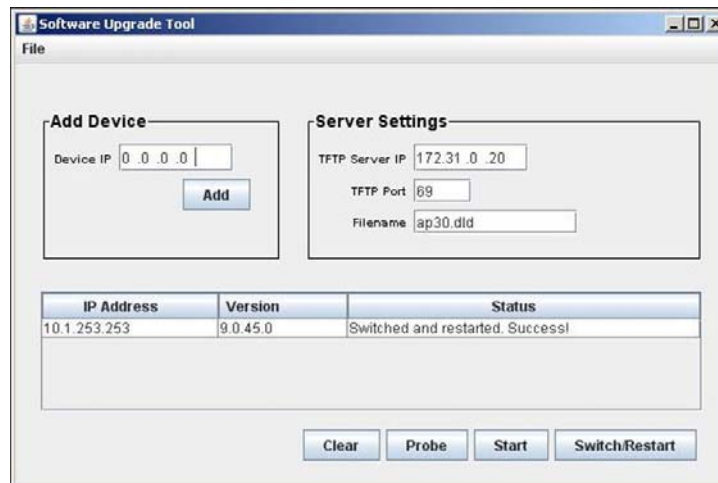
Figure 6 Software Upgrade Progress Status



When the download has successfully completed the status will be updated and the update process will be initiated for the next device in the table.

- When all devices have been updated, the **Switch/Restart** button will be active.

Figure 7 Download Complete – Switch/Restart Button Active



- End of Procedure.